

Assiniboine Watershed Stewardship Association



2024 ANNUAL REPORT



TABLE OF

CONTENTS

ACKNOWLEDGEMENTS	2
INTRODUCTION	3
BOARD CHAIR'S MESSAGE	4
WATERSHED MANAGER'S MESSAGE	5
THE ASSOCIATION AT A GLANCE	6
MEMBERSHIP REPRESENTATION	7
ASSINIBOINE RIVER WATERSHED MAP	8
YORKTON AQUIFER AREAS MAP	9
ACRONYM LIST	10
WELL DECOMMISSIONING	12
CULVERT INFRASTRUCTURE MAPPING	14
ALTERNATIVE LAND USE SERVICES (ALUS) PROGRAM	16
ALUS - GROWING ROOTS	18
ALUS - REGENERATIVE AGRICULTURE	19
ALUS - WORKSHOP & FIELD DAY	20
ALUS - PHOTOS TELL A STORY	21
WALLACE CREEK WATERSHED ASSOCIATION BOARD	22
YORKTON CREEK WATERSHED ASSOCIATION BOARD	24
POSTER CONTEST - WETLANDS & WILDLIFE	26
POSTER CONTEST - GRADE 3/4 DIVISION	27
POSTER CONTEST - GRADE 5/6 DIVISION	28
TREE PLANTING EQUIPMENT RENTAL	29
CULVERT INFRASTRUCTURE MAPPING AVAILABLE	30
DRONE SERVICES AVAILABLE	31
AUDITOR'S REPORT	32

ACKNOWLEDGEMENTS

The Assiniboine Watershed Stewardship Association (AWSA) would like to acknowledge the financial support of our 37 Grass Roots members who truly value the importance of clean, fresh water and have made a considerable effort to protect this precious resource. We also want to thank the board of directors, staff, and advisory committees for their time, effort, and dedication towards the AWSA.

Lastly, we would like to thank ALUS Canada, Environment and Climate Change Canada, the Wallace Creek Watershed Assoc. Board, and the Yorkton Creek Watershed Assoc. Board for their financial support of the AWSA this past year.



The Assiniboine Watershed Stewardship Association office is located at 29 Second Avenue North in Yorkton, Saskatchewan. Our office hours are Monday to Friday from 8:00am to 4:30pm (closed 12:00-1:00pm).

INTRODUCTION

This is the 16th edition of the Assiniboine Watershed Stewardship Association's Annual Report, which outlines the activities of the AWSA over the 2024 fiscal year (April 1, 2023 - March 31, 2024). The projects and activities found throughout this report are governed by the association's mission and vision statements, as written by its Board of Directors, and by the objectives, recommendations and key actions contained in the *Assiniboine River Watershed Source Water Protection Plan* and the *Yorkton Area Aquifers Source Water Protection Plan*.

Our **MISSION** is to have healthy source waters throughout the Assiniboine River Watershed.

Our **VISION** is citizens and communities of the Assiniboine River Watershed working together to protect the source waters of the Assiniboine River; its tributaries and aquifers within the watershed.

2024 Staff



Janet Kristjanson
Administrator



Jesse Nielsen
Manager



Chris Jordens
Technician

BOARD CHAIR'S MESSAGE



As I write this year's board message, I wanted to touch on the term Collaboration. The meaning of collaboration that I found on trusty Google, is as follows; *Collaboration is a partnership; a union; the act of producing or making something together. Collaboration can take place between two people or many people, strangers or best friends. To collaborate is to commit to the possibility of producing an outcome greater than one that would be developed in a silo.*

The Assiniboine Watershed Stewardship Association (AWSA) has always been strong at collaboration with our urban and rural municipalities, provincial, federal and non-governmental organizations in order to complete many joint source water protection programs and projects. The AWSA continues to do great work with residents and municipalities regarding our well decommissioning programs. Water wells are direct conduits into the aquifer and by eliminating these direct pathways, we can reduce the negative impacts of any water contamination entering our aquifers through old abandoned water wells. The aquifers in the Assiniboine River Watershed supply water for over 90 percent of our residents and the City of Yorkton is the largest City in Saskatchewan that solely relies on ground water for its supply. As the province grows and industrial water demands grow, such as the announcements of both canola crush plant facilities doubling their capacity in Yorkton, this generates more demands on the cities infrastructure, and a greater demand of the allocation of water within the aquifers in and around the city of Yorkton.

The importance of a clean and safe drinking water supply is second to none. Water is the most precious resource and often is taken for granted. It doesn't matter if you are an individual or part of an organization that consumes water, treats water, distributes water, uses water for recreation or for farming / industrial purposes, water is life! With collaboration, all industries, municipality's, government and non-government organizations that impact water in any way, can focus on a common goal and have a similar mindset that we are all 'One Team' all collaborating on 'One Common Goal', to protect and enhance source water in Saskatchewan.

I want to thank the member municipalities, their representatives, the AWSA Board of Directors and the AWSA staff for continuing to implement source water programs to further enhance and protect our aquifers, creeks, rivers, lakes, land, and infrastructure within our watershed. I also want to thank our collaborating partners for the continued support, effort, and commitment to collaborate together to protect the source waters of the Assiniboine River Watershed.

Aron Hershmillier
Board Chair,
Assiniboine Watershed Stewardship Association

MANAGER'S MESSAGE

May 4, 2009 - the day I began my career with the Assiniboine Watershed Stewardship Association. Except back then I didn't think of it as a career, but rather just a new job; an opportunity to get some work experience under my belt as I finished up my Master of Science degree. Fast forward to 15 years later and here I am, still at 'er! That "new job" developed into my career- the first and only full time job I've ever had outside of high school and post-secondary summer jobs. It's a career that has been filled with all sorts of accomplishments and fond memories that I'll cherish forever.

I am one of the lucky ones, for I am one of those graduates of post-secondary education whose career ties in exactly what I spent tens of thousands of dollars of the government's money (in the form of Federal Student Loans) on studying and learning over the course of six and a half years of University. Thankfully for me God has always blessed me when it comes to academics, and much of those educational costs were forgiven due to my excellent grades and many scholarships I received. But it still took many years at my starting wage of \$20/hr at the AWSA before I could rid myself of the ominous feeling of student loan debt that shadowed over my bank account long after I wrapped up my education.

Looking back, I'm grateful for having to put myself through University. It taught me that even the most daunting of tasks can be overcome and the most ambitious of dreams can be achieved through simple will, determination, and hard work. It's the reason why I've poured my heart and soul into everything I've done at the AWSA over the past 15 years. I always wanted to serve our membership to the very best of my abilities and make the AWSA a leader in terms of watershed stewardship in the province. Reflecting back, it brings me great pride to know that I have achieved both.

However, no matter how many great projects we do or accomplishments we achieve, for me they will always take second place to the people that were involved in making it all happen. I am incredibly grateful and humbled by the fact that I have had the opportunity to get to know, be mentored by, work alongside, to have learned from, to have taught, and put quite simply, to be blessed to have had part of my life, many incredible individuals who all for their own reasons, hold a special part in my heart.

So what will the next 15 years of my career look like (30 years at the AWSA is my retirement goal)? Well, I can promise you that just like I have always tried to do throughout my career, I'll continue to strive to do the very best that I'm capable of doing for the health of this beautiful piece of God's great Earth that we call the Assiniboine River watershed.


Jesse Nielsen
Manager,
Assiniboine Watershed Stewardship Association



THE ASSOCIATION AT A GLANCE

The Assiniboine Watershed Stewardship Association is an independent, non-profit organization committed to protecting source waters in the Assiniboine River Watershed. The association's vision is:

Citizens and communities of the Assiniboine River Watershed working together to protect the source waters of the Assiniboine River, its tributaries and aquifers within the watershed.

To fulfill this vision, the Association works in partnership with public and private stakeholders on a variety of water management projects. Much of this work focuses on the objectives, recommendations and key actions contained in the *Assiniboine River Watershed Source Water Protection Plan* and the *Yorkton Area Aquifers Source Water Protection Plan*. The Association's Board of Directors has also chosen to undertake some other initiatives, which are detailed in this Annual Report.

The business and affairs of the Association are managed by its Board of Directors. The Board is composed of 12 advisory members: 2 from a rural municipality and 2 from an urban municipality from each of the three Advisory Committees: the Assiniboine River Advisory Committee, the Whitesand River Advisory Committee and the Yorkton Area Aquifers Advisory Committee.

All Directors are elected for a two-year term at their respective Advisory Committee meetings. Directors are elected on a staggered two-year basis (i.e. 1/2 of board member's terms expire each year).

All Directors may be re-elected and are not restricted as to the number of consecutive terms served.

The Board of Directors meet four times a year, and annually appoints at the AGM, a Chair, Vice Chair and such other committee positions as the Board may determine.

The day-to-day business of the Association is overseen by the Watershed Manager. The Watershed Manager reports to the Board, and is granted such powers and duties as the Board may specify.

The Association receives operating revenue in the form of revenues from its paid membership. In addition, the AWSA receives revenue for the project management and administration of the Yorkton Creek Watershed Association Board, the Wallace Creek Watershed Association Board, and for being a delivery community for the ALUS program. Beyond these revenue streams, the AWSA receives revenue to administer various one-off projects and programming, which varies from year to year depending on grant availability and the success of funding applications.

MEMBERSHIP REPRESENTATION

2024 Board of Directors

Aron Hershmillier Board Chair	City of Yorkton
Grant McCallum Board Vice Chair	Town of Saltcoats
Don Olson	Town of Sturgis
Andrew Fahlman	City of Melville
Russ Thies	Town of Churchbridge
Stephen Spearman	Town of Springside
Roy Derworiz	R.M. of Calder No. 241
Randy Trost	R.M. of Orkney No. 244
Garry Liebrecht	R.M. of Wallace No. 243
Robert Steffenson	R.M. of Good Lake No. 274
Dwayne Kitzan	R.M. of Insinger No. 275
Duane Hicks	R.M. of Clayton No. 333

2024 Staff Members

Jesse Nielsen - Manager
Chris Jordens - Technician
Janet Kristjanson - Administrator



Assiniboine River Advisory Committee

Russ Thies – Town of Churchbridge
Lyle Romaniuk – Town of Kamsack
Lorrie Popp – Town of Langenburg
Florian Balawyder – Town of Preeceville
Don Olson – Town of Sturgis
Reg Andrews – Village of MacNutt
Trevor Kirk – R.M. of Langenburg No. 181
David Zerr – R.M. of Churchbridge No. 211
Roy Derworiz – R.M. of Calder No. 241
Craig Salahub – R.M. of Cote No. 271
Conrad Vogel – R.M. of St. Phillips No. 301
Brad Hallick – R.M. of Keys No. 303
Ken Frampton – R.M. of Livingston No. 331
Duane Hicks – R.M. of Clayton No. 333
Reg Yaremchuk – R.M. of Preeceville No. 334
Collin Redman – R.M. Hazel Dell No. 335

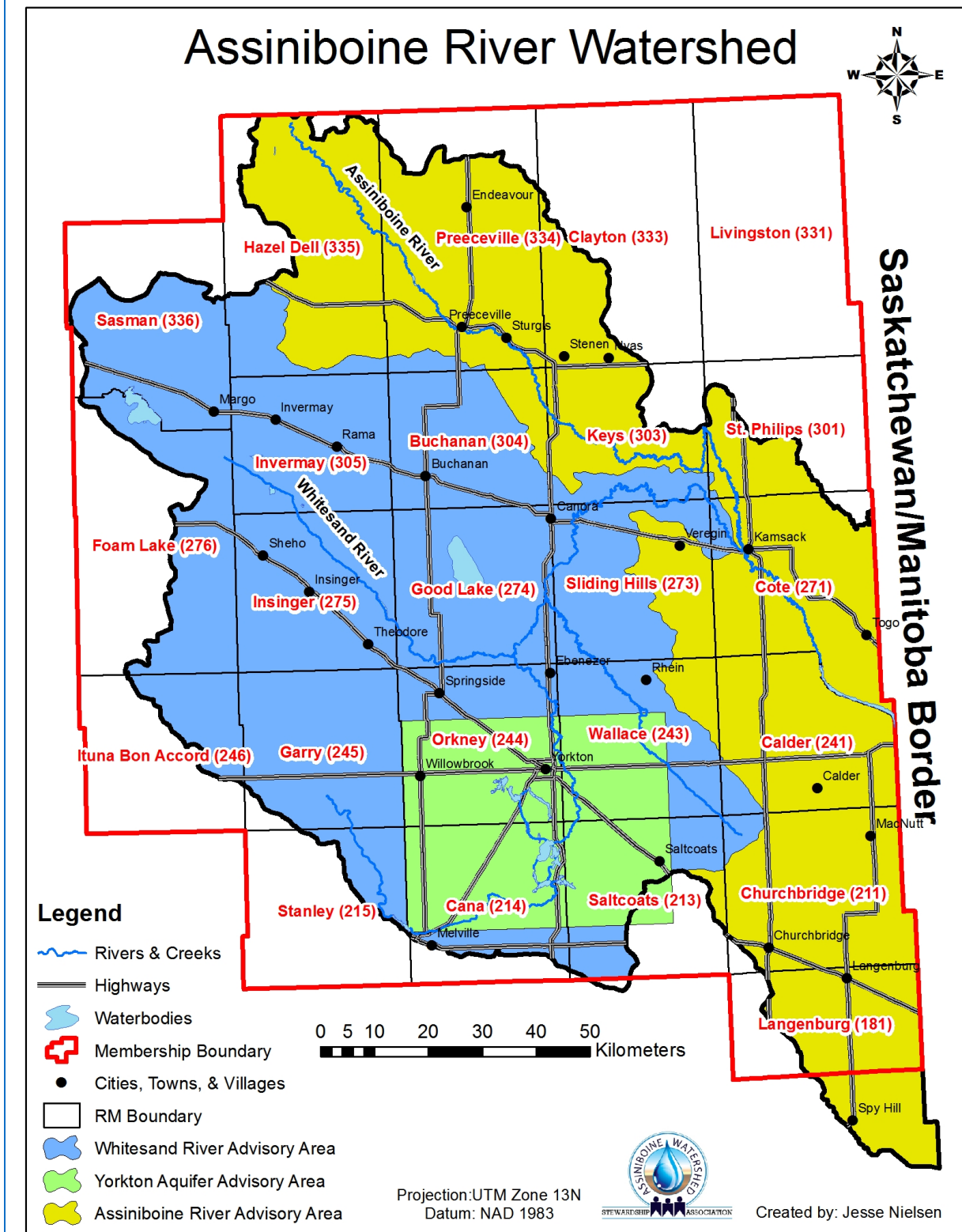
Whitesand River Advisory Committee

Andrew Fahlman – City of Melville
Brad Gabora – Town of Canora
Stephen Spearman – Town of Springside
Garry Jopko – Village of Rhein
Roger Hardie – Village of Theodore
Brent Ulmer – R.M. of Stanley No. 215
John Zuchkan – R.M. of Garry No. 245
Leonard Kuschak – RM of Ituna Bon Accord No. 246
Leanne Weinbender – R.M. of Sliding Hills No. 273
Robert Steffenson – R.M. of Good Lake No. 274
Dwayne Kitzan – R.M. of Insinger No. 275
Grant Faye – R.M. of Foam Lake No. 276
Don Skoretz – R.M. of Buchanan No. 304
Phillip Shewchuk – R.M. of Invermay No. 305
Stuart Byman – R.M. of Sasman No. 336

Yorkton Area Aquifers Advisory Committee

Aron Hershmillier – City of Yorkton
Grant McCallum – Town of Saltcoats
Joe Skitcko – R.M. of Saltcoats No. 213
Perry Yelle – R.M. of Cana No. 214
Garry Liebrecht – R.M. of Wallace No. 243
Randy Trost – R.M. of Orkney No. 244

THE ASSINIBOINE RIVER WATERSHED



YORKTON AQUIFERS AREA



Groundwater Resources in the Yorkton Aquifer Management Plan Area, Final Report

Location and extent of major aquifers in the Yorkton study area

- Aquifer extents**
- Bredersbury (Durkath) aqu.
 - Bredersbury aqu.
 - Collicott aqu.
 - Empress Gp. aqu.
 - Leitch Lake aqu.
 - Logan North aqu.
 - Logan South aqu.
 - Logan Valley aqu.
 - Orkella aqu.
 - Othoin aqu.
 - Stardee aqu.
 - Unnamed Bredersbury Fm. aqu.
 - Unnamed Empress Gp. aqu.
 - Unnamed Interill aqu.
 - Willowbrook "A" aqu.
 - Willowbrook aqu.

- Road
- Highway

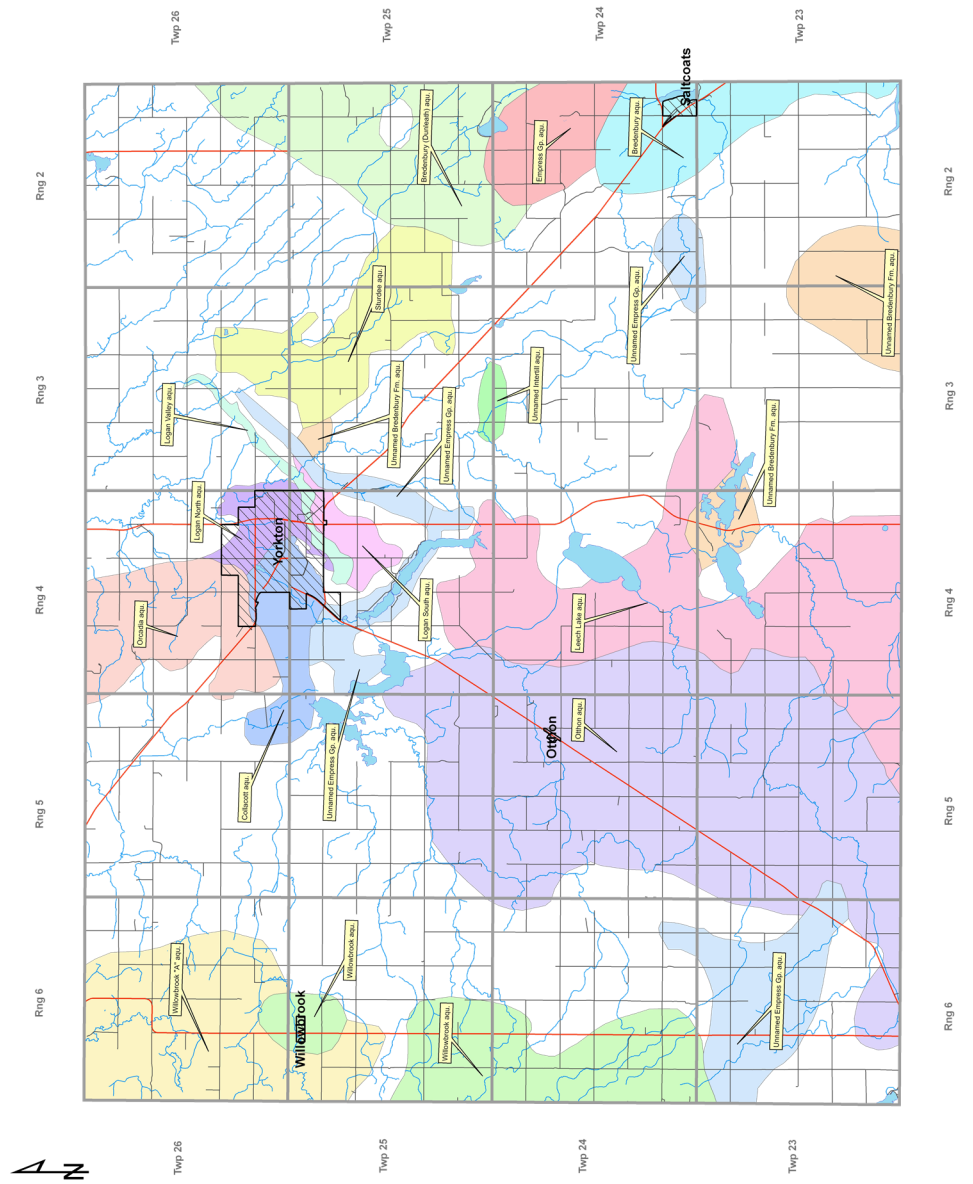


These maps are accompanied by a series of cross sections showing the vertical distribution of aquifers and aquifers on the map. The map and cross sections are representations of the data from the boreholes and wells indicated on the map. The map and cross sections are not intended as a geological unit is likely to be found. Aquifers and other geological features may not be shown at a specific site or may occur at bearing zones may be found outside the boundaries shown.

This document may not be copied without the consent of the author. However, copies may be made, except provided the original publication is cited where applicable.

Map accompanies report:

Mathews, H. and Simpson, M. 2006. Groundwater resources Saskatchewan Research Council, SRC Publication No. 104 (p. 150)



ACRONYM LIST

The world of water stewardship and environmental management is filled with many different acronyms that even the most veteran board members need a little reminder of who or what Jesse is referring to when he rambles off comments like, “The AWSA no longer receives funding from the WSA because after the WSGs lost the BMP funding from the MOA CAP contract in 2021, SAW restructured and now receives that money from the government”. Hopefully this list will help you decipher some of that watershed lingo.

AAFC – Agriculture and Agri-Food Canada
ADOPT – Agricultural Demonstration of Practices and Technology
AGM – Annual General Meeting
AIS – Aquatic Invasive Species (Zebra Mussels)
ALUS – Alternative Land Use Services
ARBI – Assiniboine River Basin Initiative
ARW – Assiniboine River Watershed
ASAP – ALUS Saskatchewan Assiniboine Project
AWSA – Assiniboine Watershed Stewardship Association
BMP – Beneficial Management Practice
CAP – Canadian Agricultural Partnership
COY – City of Yorkton
CWRA – Canadian Water Resources Association
DFO – Department of Fisheries and Oceans
DUC – Ducks Unlimited Canada
ECCC – Environment and Climate Change Canada
FRWIP – Farm and Ranch Water Infrastructure Program
GIS – Geographic Information System (computer mapping)
GPS – Global Positioning System
GSLWAB – Good Spirit Lake Watershed Association Board
ILO – Intensive Livestock Operation
LIRA – Land and Infrastructure Resiliency Assessment
MAW – Manitoba Association of Watersheds
MOA – Ministry of Agriculture
MOE – Ministry of Environment
MOH – Ministry of Highways
NRCAN – Natural Resources Canada
PAC – Partnership Advisory Committee
PCAP – Prairie Conservation Action Plan
PFRA – Prairie Farm Rehabilitation Administration
PWCP – Prairie Watersheds Climate Program

ACRONYM LIST

OFCAF – On-Farm Climate Action Fund
QP – Qualified Person
RALP – Resilient Agricultural Landscapes Program
RM – Rural Municipality
RTK– Real Time Kinematic (Extremely High Accuracy GPS)
SARM – Saskatchewan Association of Rural Municipalities
SaskFSA – Saskatchewan Farm Stewardship Association
SAW – Saskatchewan Association of Watersheds
SCAP – Sustainable Canadian Agricultural Partnership
SCDA – Saskatchewan Conservation & Development Association
SRC – Saskatchewan Research Council
SUMA – Saskatchewan Association of Urban Municipalities
SWA – Saskatchewan Watershed Authority
SWAT – Soil and Water Assessment Tool
SWAUMP – Source Water and Urban Municipal Projects Fund
SWF – Saskatchewan Wildlife Federation
SWPP – Source Water Protection Plan
WCWAB – Wallace Creek Watershed Association Board
WSA – Water Security Agency (Formerly SWA)
WSG – Watershed Stewardship Group
YCWAB – Yorkton Creek Watershed Association Board
YWF – Yorkton Wildlife Federation
YRPDC – Yorkton Regional Planning District Commission

Aquifer – A permeable body of rock capable of yielding usable quantities of groundwater to wells and springs.

Stewardship – The responsible use and protection of the natural environment through conservation and sustainable practices to enhance ecosystem resilience and human well-being.

Sustainability – Meeting the needs of the present without compromising the ability of future generations to meet their own needs.

Watershed – An area of the landscape where topography dictates that all water within that area drains to a common outlet stream, creek, river, or lake.

WELL DECOMMISSIONING

2023 saw the watershed-wide well decommissioning campaign resume as in previous years. Here's how our program works:

- ANY landowner is eligible provided the RM agrees to be the applicant on behalf of the landowner
 - ⇒ Farms, acreages, abandoned yard sites, even rural cites, towns, villages, and hamlets
- The cost of a well decommissioning (only large diameter wells greater than 24") is a flat rate of \$2,500.00 plus GST & PST (\$2,775.00).
(In very rare cases, there may be additional cost for special circumstance-type wells)
- The AWSA facilitates all aspects of the process (landowner communication, contractor coordination, and funding support)
- The RM acts as the applicant to the Ministry of Agriculture's Farm and Ranch Water Infrastructure Program (FRWIP), on behalf of the landowner, for project expense reimbursement, with the AWSA coordinating & completing ALL paperwork required
- We ask the RMs if they'd advertise the program by including our flyers with mailed-out RM tax notices

This approach to applying for well decommissioning funding has worked amazingly and greatly increased uptake of the practice over the years because individual landowners aren't required to foot the cost of the work and wait for a rebate from the government. And because we can submit the rebate application to the FRWIP with simply the contractor invoice (no need for proof of payment for costs < \$5,000), it's often the case that the RM receives their rebate very promptly once the work is completed, with minimal to no rebate wait period.



WELL DECOMMISSIONING

Below is a breakdown regarding how payment/reimbursement works:

- The AWSA serves as the contact for this program as well as coordinates ALL steps of the process
 - AWSA-approved contractors will decommission large diameter wells at a sub-total cost of \$2,500.00 ea. plus tax (GST & PST)
 - The R.M. will be responsible for paying the contractor invoice **\$2775.00**
 - ⇒ The RM can claim back the GST portion of the sub-total **-\$ 125.00 (\$2650.00)**
 - ⇒ The ASWA will submit the claim form to the Ministry of Ag's Farm and Ranch Water Infrastructure Program to get the R.M. the 90% reimbursement (\$2,500 x 90%) **-\$2250.00 (\$400.00)**
 - ⇒ The balance remaining is \$400
 - * 10% of the Sub-Total amount not reimbursed (\$250)
 - * PST on the Sub-Total amount (\$150)
 - ⇒ The AWSA will reimburse the RM \$100/well **-\$100.00 (\$300.00)**
 - * (In order to keep the landowner out-of-pocket cost at \$300/well)
 - ⇒ The RM will invoice the landowner for the remaining \$300 **-\$300.00 (\$0.00)**
- ZERO Cost to the RM**

***Note:** If the RM so chooses, they may cover the entire cost of the decommissioning (i.e. they absorb the \$400), making it 100% free to their rate payers. We had 2 RMs, Orkney & Saltcoats, do that in 2023.

2023 Well Decommissioning Stats:

- 21 out of our 24 RM members chose to participate in the program in 2023
- 48 wells were decommissioned across the watershed



CULVERT INFRASTRUCTURE MAPPING

The AWSA offers culvert mapping services to all of its member municipalities. We have previously mapped culverts with all of our urban municipalities. In 2023 we were requested by the RM of Keys, No. 303 and Livingston, No. 331 to map the grid road culverts throughout their entire RMs. New AWSA technician, Chris Jordens tackled the task.

All culvert positions were GPS recorded using a hand-held Garmin GPS. If precise culvert invert elevations are required, we do have that ability with our Hemisphere RTK GPS for an additional cost, however, in most cases, the precision offered by the Garmin is sufficient for relative locations. In addition to location, the following other attributes were recorded: length, diameter, material type, and condition (e.g. dented, blocked, collapsed).

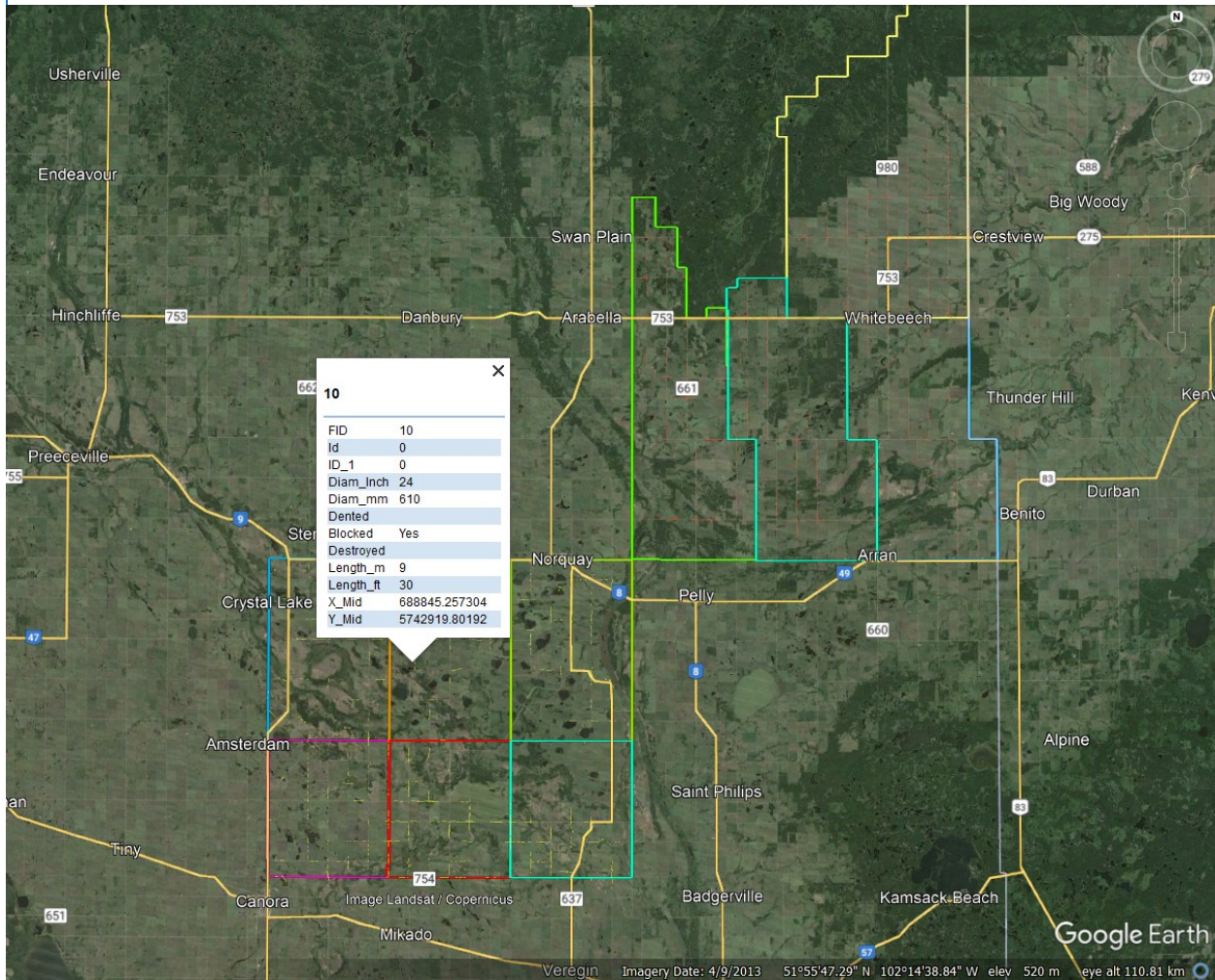


The information gathered can be presented as an Excel spreadsheet, digital and printed maps, and probably the most useful, a .KMZ file that can be uploaded into Google Earth Pro. This allows the user to see the location of each culvert on the landscape and when they click on it they'll be given the attributes for that culvert along with any pictures that were taken. We also provide the RM division boundaries as .KMZ files to assist the user with navigating. Since Google Earth Pro is a free download, we feel this is the best way to view the culvert mapping data as an RM council.

The data provided by this service can be utilized for asset management and/or water management purposes. Given that high accuracy elevation data is now available for the majority of the Assiniboine River watershed thanks to the LiDAR acquisition that occurred in the fall of 2023, culvert data provided by the AWSA can be used in conjunction with the LiDAR data for very precise flood and water movement modelling and mapping across the landscape.

The optimal time to perform this service is early spring, when the flowing water and lack of vegetation in the road ditches makes for more efficient culvert location. If you think that your RM may benefit from culvert infrastructure mapping don't hesitate to get in contact with the AWSA to discuss your particular needs.

CULVERT INFRASTRUCTURE MAPPING



ALTERNATIVE LAND USE SERVICES (ALUS) PROGRAM

ALUS is a community-developed, farmer-delivered program that provides support to farmers and ranchers to enhance and maintain ecosystem services on ag land; services such as clean water, clean air, soil fertility, carbon sequestration, healthy wildlife habitat, and increased biodiversity.

In 2023 we signed new agreements with 6 participants to convert marginal cropland into perennial forage cover, 2 participants implementing rotational grazing, and 31 participants seeding multi-species cover crops or inter-cropping, spanning nearly 3000 acres for a total of almost \$400,000 of funding support over the terms of their agreements. In addition, we renewed agreements on 167 acres, with 5 previous participants, for a total of \$23,235 over the course of the next 5 years.



Community-developed

The ALUS program is flexible. It is designed to be customized by **local communities** to respect local agricultural and environmental priorities, and help create rural resilience.



Farmer-delivered

Agricultural producers are in a unique position to provide important solutions to some of the most pressing environmental challenges of our time, including **climate change** and **biodiversity** loss.



Science-based

Based on sound scientific principles and verification guidelines, ALUS provides valuable support and technical expertise for the design and implementation of natural infrastructure projects and **nature-based solutions**.



Integrated

The delivery of the ALUS program is intended to complement existing conservation programs, including federal and provincial government policy frameworks.



Targeted

The ALUS program produces **ecosystem services** on marginal and ecologically sensitive parcels and on lands that can be managed in a different manner.



Accountable

ALUS projects are independently monitored, verified and audited by trusted farm organizations or reliable institutions. Data collection respects the highest standards in



Market-driven

The ecological services produced by ALUS projects have economic value on the marketplace, which ALUS is actively developing. Citizens, corporations and philanthropists invest directly in environmental stewardship.



Voluntary

Farmers and ranchers who choose to participate in the ALUS program have flexible agreements that suit their operation and offer them financial compensation for their ecosystem management.



Over 80 Participants Enrolled
on Over 6500 Acres

ALTERNATIVE LAND USE SERVICES (ALUS) PROGRAM



ALUS

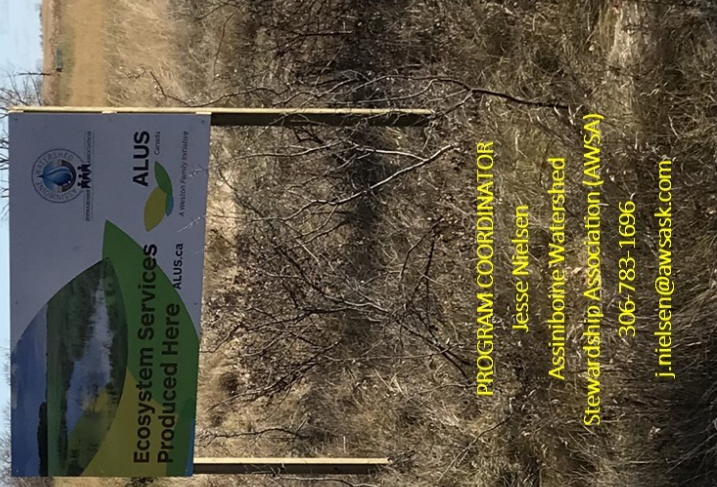
Do you have marginal cropland with low productivity due to flooding, salinity, or overlap? Are you interested in seeding cover crops on your farm?

What are we looking for?

The ideal candidate will have marginal land that is currently in annual crop production located around or in between wetlands/sloughs. The piece of land may be small, making it inefficient for large machinery to access it, or may be a poor producing area due to salinity and flooding, making it economically nonsensical to continue growing crops on. This marginal land can instead be converted to perennial forage production or cover crops, with the producer receiving payments as outlined below. OR Do you use cover crops to improve the health of the soil on your farm?

PRODUCER INCENTIVE PAYMENTS

Project Type	Establishment Payment	Annual Payment	Description
Seeding Perennial Forage	\$65/acre	\$35/acre*	(* 5 years of annual payments; ** 2 years of annual payments) Converting marginal cropland (poor access, saline, flood-prone, coarse soil texture, highly sloped, etc.) to perennial forage cover using a blend of tame grass/legume species.
Wetland Conservation < 2 acres	N/A	\$30/acre*	Conserving existing prairie pothole wetland habitat adjacent to the newly seeded forage (basin size less than 2 acres in area). Must be in conjunction with Seeding Perennial Forage.
Wetland Conservation > 2 acres	N/A	\$20/acre*	Conserving existing prairie pothole wetland habitat adjacent to the newly seeded forage (basin size greater than 2 acres in area). Must be in conjunction with Seeding Perennial Forage.
Upland Conservation	N/A	\$20/acre*	Conserving existing upland habitat composing of native trees, shrubs, and grasses adjacent to the wetland habitat. Must be in conjunction with Seeding Perennial Forage.
Regen Ag	N/A	\$35/acre**	Seeding cover crops for grazing, baling, silage, or intercropping a cash crop with another cash or cover crop, or any practice(s) aimed at promoting the 5 Principles of Soil Health.



PROGRAM COORDINATOR

Jesse Nielsen

Assiniboine Watershed

Stewardship Association (AWSA)

306-783-1696

j.nielsen@awsask.com

ALUS - GROWING ROOTS



ASAP was one of 3 prairie ALUS communities (the other 2 in Manitoba) once again delivering ALUS' *Growing Roots* pilot project program in 2023-24. Funded by General Mills International, the program aims to educate about and promote Regenerative Agriculture.

Now in year 2 of the 3 year pilot, ASAP was given a goal of adding 13-15 new participants to the 14 that signed up in year one of the program in 2022. We're proud to say that we doubled-up that goal and added 31 new participants to the program, for a total of 45 participants in the 2023 growing year!



Regenerative agriculture is a transformative farming approach guided by the 5 Principles of Soil Health. Regenerative agriculture mixes innovative farming and grazing practices to rebuild organic matter and restore soil biodiversity. This process enhances soil fertility and crop health.

Incorporating regenerative agriculture into your farm's production can reduce soil erosion, assist in water infiltration, and increase the soil's water retention rate. This encourages healthy water quality, decreases nutrient runoff, and improves water availability for your crop.

AWSA offers a comprehensive program to support farmers in adopting regenerative practices for their farms. Through our program, we provide financial incentives to encourage the implementation of regenerative techniques as well as mentoring services to support producers in their regenerative endeavours and help them make informed decisions to increase their success with the practice.

The tremendous uptake of ASAP's Growing Roots program can be attributed to the emphasis on extension through field days in 2022, the involvement of our four experienced regenerative farmer coaches helping to mentor and act as a knowledge resource for new participants, and the great working relationship we've established with our local cover crop seed dealers within the watershed. Thank you to everyone for making our program a great success!

WHERE
AGRICULTURE
& **NATURE**
MEET

5 Principles of Soil Health

- 1) **Cover/armour the soil**
- 2) **Minimize soil disturbance**
- 3) **Increase plant diversity**
- 4) **Keep living roots in the soil**
- 5) **Integrate livestock**



Mimicking Nature with Diversity

ALUS - WORKSHOP & FIELD DAY

ASAP, through its *Growing Roots* (Regenerative Ag) and *Grazing Forward* (Rotational Grazing) programs, in conjunction with SAW, hosted a workshop & field day in Langenburg on July 19th, *Watershed Stewardship for a Changing Climate*.

Dr. Dave Sauchyn from the University of Regina and PARC chair, presented on the changing prairie climate and how regenerating your soil health can be used as a tool to adapt and become more resilient to that change. Afterwards we toured ASAP participant, Aaron Gray's farm where he showed us how he's utilizing cover crops, rotational grazing, and irrigation from drainage runoff as means of making his farm more sustainable and resilient in the face of climate change.

ALUS  

Watershed Stewardship for a Changing Climate
REGENERATIVE AG WORKSHOP & FIELD DAY

JULY 19TH, 2023
Langenburg Community Center
101 Carl Ave. W
Langenburg, SK

FREE OF CHARGE
REGISTRATION REQUIRED
RSVP BY JULY 14TH

CONTACT:
JESSE NIELSEN
ASSINIBOINE WATERSHED
306-783-1696
J.NIELSEN@AWSASK.COM

<p>REGENERATIVE AG 101 WORKSHOP HOSTED BY UNDERSTANDING AG</p> <p>8:30AM COFFEE & REGISTRATION 9AM WORKSHOP BEGINS 11AM MAINTAINING SOIL HEALTH AS AN ADAPTATION TO CLIMATE CHANGE - DR. DAVE SAUCHYN, U OF R 12PM HOT LUNCH</p>	<p>REGENERATIVE AG FIELD TOUR HOSTED BY AARON GRAY, ALDARON BEEF</p> <p>1PM-4PM - ROTATIONAL GRAZING, COVER CROPS, PASTURE & CROP IRRIGATION - STEWARDSHIP PROGRAM FUNDING OPPORTUNITIES - SOIL HEALTH EDUCATION & DEMONSTRATIONS</p>
--	--

    This project was undertaken with the financial support of the Government of Canada. Ce projet a été réalisé avec l'appui financier du gouvernement du Canada. 

ALUS - PHOTOS TELL A STORY

They say a picture is worth a 1000 words... well here's an entire story book of our 2023 ALUS projects.



WALLACE CREEK WATERSHED ASSOCIATION BOARD



Wallace Creek Watershed is a sub-basin of the Assiniboine River Watershed located in East-Central Saskatchewan.

The watershed is 692 km² (170,000 acres) & the creek is 63 miles (101 km) long, starting at Rooke Lake in the RM of Churchbridge and flowing NW to the Whitesand River just south of the highway 9 & 229 junction.

The watershed spans just over 6 different Rural Municipalities:

- RM of Sliding Hills: Ron Rozema & Ed Keyowski
- RM of Wallace: Garry Liebrecht (Chairman) & Dave Burym
- RM of Calder: Roy Derworiz & Don Soloninko
- RM of Saltcoats: Fred Cross & Les Trowell
- RM of Churchbridge: Neil Rathgeber (Vice Chair) & David Zerr
- Village of Rhein: Garry Jopko



Wallace Creek Low Level Crossing, RM of Sliding Hills, No. 273 on Right Private Road Across Creek on Left, Snowmelt 2024 (Looking North)

WALLACE CREEK WATERSHED ASSOCIATION BOARD

2023 brought about an end to the issues surrounding a low level crossing in the RM of Sliding Hills that stems back to when WCWAB removed silt built up under the original bridge during a channel clearing project in the fall of 2019, leading to the discovery that the bridge needed to be replaced due to its unsafe condition. WCWAB was involved for over 3 years in trying to mitigate the problems caused by the low level crossing that was constructed in place of the timber bridge spanning Wallace Creek. After numerous failed attempts at negotiating a solution between WCWAB and the RM of Sliding Hills, the landowner's whose land access was severely impacted when the low level was under water for nearly 2 months in the spring of 2023, constructed their own private road across the creek, downstream of the low level crossing. Water conveyance under the new road is handled by three 6ft culverts, identical to what's in the road crossings one mile upstream and downstream of the low level.

Spring Snowmelt 2020 with Original Bridge
(looking East)



Spring Snowmelt 2023 with Low Level and New Road
(looking East)



YORKTON CREEK WATERSHED ASSOCIATION BOARD



The Yorkton Creek Watershed Association Board (YCWAB) owns and operates 13 structures for water management south and west of the City of Yorkton. The watershed association undertook some structure maintenance in 2023 in order to improve the said management. Below are a couple pictures of improvements made at the Willowbrook North Diversion structure. This structure allows the ability to divert Willowbrook Creek water into Cussed Creek to the north, lessening the amount of water flowing east towards Yorkton and into the Rousay Lakes.



YORKTON CREEK WATERSHED ASSOCIATION BOARD

With the increased moisture in 2022, the YCWAB revisited their Operations Guidelines to ensure that the entire Yorkton Creek Water Management System was operating according to the guidelines. This meant a more hands-on approach to management by both YCWAB staff and board members, which resulted in a well-controlled system of water levels. The below pictures from snowmelt of 2023 are evidence of that.



POSTER CONTEST - WETLANDS & WILDLIFE

The Assiniboine Watershed Stewardship Association hosted the annual AWSA poster contest in 2023. The theme was “Wetlands and Wildlife” and there were two competition divisions. Students in grades 3 & 4 and grades 5 & 6 had a chance at cash prizes. Jesse and Chris did a number of in-class presentations as part of this initiative, educating the students on what a watershed is, where their drinking water comes from, what wetlands are, and the animals that call wetlands home.

Jesse & Chris completed 7 in-class presentations across the watershed and received over 200 posters! This year our Grade 3/4 Division winner was grade 3 student, Aubrey from Davison School in Melville and our Grade 5/6 Division winner was Leah from Davison School in Melville. They both took home \$100 cash and earned an AWSA-hosted pizza party for their class! Congratulations Aubrey and Leah!

Assiniboine Watershed Stewardship Association
POSTER CONTEST
“Wetlands and Wildlife”

2 Prize Divisions:
Grades 3-4 & Grades 5-6

**1st place: \$100 Cash Plus
A Pizza Party for their Class!**

2nd place: \$50 Cash

3rd place: \$25 Cash

Mail entries to the:
Assiniboine Watershed
Stewardship Assoc.
29 2nd Ave. North
Yorkton, SK S3N 1G1
306-783-1696

For full contest details contact
Jesse Nielsen:
j.nielsen@awsash.com
Or check out:
www.assiniboinewatershed.com



Entry deadline is May 31st, 2023
Winners to be announced the in June



POSTER CONTEST - GRADE 3/4 DIVISION



1st Place
Aubrey, Gr. 3, Age 8
Davison School Melville



2nd Place
Jayla, Gr. 3, Age 8
Miller School Melville

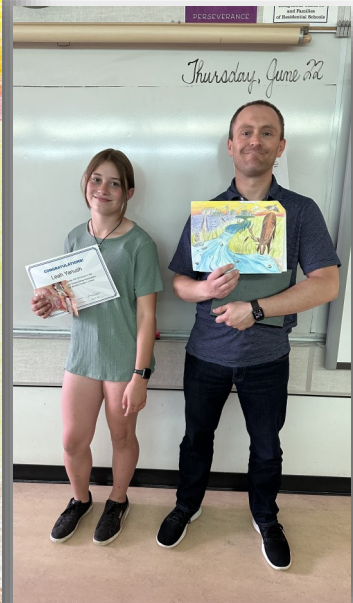


3rd Place
Rebecca Spray, Gr. 3, Age 8
Preeceville School Preeceville



POSTER CONTEST - GRADE 5/6 DIVISION

1st Place
Leah, Gr. 6, Age 12
Davison School Melville



2nd Place
Brianna, Gr. 6, Age 12
St. Michael's School Yorkton



3rd Place
Charlie, Gr. 6, Age 12
Yorkdale School Yorkton



TREE PLANTING EQUIPMENT RENTAL



Tree Planting Equipment Rental

The Assiniboine Watershed Stewardship Association is pleased to announce that it rents tree planting equipment & supplies. We have one tree planter and three plastic mulch applicators available for rental on a first-come-first-served basis.

Rental Costs

- ⇒ Equipment rental
 - ⇒ \$50/day or \$200/week (5 days)
- ⇒ Plastic Mulch
 - ⇒ \$225/roll (4'x1500')
 - ⇒ \$300/roll if you live outside the Assiniboine Watershed membership area
 - ⇒ 3.2 mm thickness



Equipment Information

- ⇒ Tree Planter (1 unit available)
 - ⇒ Hydraulic-operated coulter disc creates furrow, soil must be well tilled for best results
 - ⇒ Seats 2 people for planting
 - ⇒ Can be pulled behind tractor or 4-wheel drive truck
 - ⇒ Ball hitch (supplied)
- ⇒ Mulch Applicator (3 units available)
 - ⇒ Pull-type, clevis-pin hitch (you must provide receiver with ball removed)
 - ⇒ Requires 50hp+ tractor with hydraulic hook-up capability



For more information
contact the
Assiniboine Watershed
Stewardship Association
306-783-1696



CULVERT INFRASTRUCTURE MAPPING AVAILABLE



Culvert Infrastructure Mapping Available



The Assiniboine Watershed Stewardship Association is pleased to offer its services to our Rural and Urban member municipalities interested in having their culvert infrastructure GPS mapped and inventoried. AWSA staff will measure and record dimensions, GPS locations, culvert heights and any other relevant infrastructure information; and compile it in various formats for viewing, records, and analysis.

Cost to Membership Municipalities

\$500/day labor rate (field and/or in-office map creation)

\$0.70/km mileage rate

⇒ Member - Urban and Rural Municipalities will receive 1 FREE day of mapping.



Example Map
Town of Saltcoats Culvert Infrastructure



Legend

— Culverts

0 100 200 300 400 500

Scale 1:5500

Created By: Jesse Nielsen



⇒ Survey grade GPS (RTK capability) with sub-inch horizontal & vertical accuracy available*

* Additional cost applies



For more information contact Jesse at the
Assiniboine Watershed Stewardship Association
306-783-1696

DRONE SERVICES AVAILABLE



Drone Services Available



The Assiniboine Watershed Stewardship Association is pleased to offer its services to our Rural and Urban member municipalities interested in having aerial pictures or video captured to assist in such things as channel clearing & beaver dam removal requirements, project site planning, or even advertising and promotion.

Cost to Membership Municipalities

\$300/day labor rate (field and/or in-office work)

\$0.70/km mileage rate

- ⇒ High-res pictures and 4K resolution video
- ⇒ You will be provided a USB drive with your raw images and/or video
- ⇒ We also provide images as a .KMZ file for convenient viewing in Google Earth- great for seeing where on the landscape pictures were taken
- ⇒ Drones allow increased efficiency, easy access to remote areas, and are a cost-effective means for gathering information
- ⇒ Nothing beats a "bird's eye view"



We fly the very capable DJI Air 3



For more information contact Jesse at the Assiniboine Watershed Stewardship Association
306-783-1696

**Assiniboine Watershed Stewardship
Association Inc.**

FINANCIAL STATEMENTS

Year Ended March 31, 2024

Assiniboine Watershed Stewardship Association Inc.

Yorkton, Saskatchewan

March 31, 2024

Table of Contents

	Page
Statement of Responsibility	1
Independent Practitioners' Review Engagement Report	2
Statement of Financial Position	3
Statement of Changes in Net Assets	4
Statement of Operations	5
Statement of Cash Flow	6
Notes to Financial Statements	7-12

Statement of Responsibility

The accompanying financial statements are the responsibility of the Board Members of the Assiniboine Watershed Stewardship Association Inc. and have been prepared in compliance with legislation, and in accordance with Canadian public sector accounting standards including the 4200 series.

In carrying out its responsibilities, the Board Members maintain appropriate systems of internal and administrative controls designed to provide reasonable assurance that transactions are executed in accordance with proper authorization, that assets are properly accounted for and safeguarded, and that financial information produced is relevant and reliable.

The Assiniboine Watershed Stewardship Association Inc.'s board has approved these financial statements.

Baker Tilly SK LLP, as the organization's appointed external accountant, has reviewed the financial statements. The Independent Practitioners' Review Engagement Report is addressed to the Board of Directors and appears on the following page. Their opinion is based upon a review conducted in accordance with Canadian generally accepted standards for review engagements, performing such procedures as they consider necessary to obtain limited assurance that the financial statements are free of material misstatements and present fairly the financial position and results of the organization in accordance with Canadian public sector accounting standards including the 4200 series.



Board Member



Independent Practitioners' Review Engagement Report

To the board of directors
Assiniboine Watershed Stewardship Association Inc.

We have reviewed the accompanying financial statements of Assiniboine Watershed Stewardship Association Inc., that comprise the Statement of Financial Position as at March 31, 2024, and the Statements of Operations, Changes in Net Assets and Cash Flows for the year then ended, and a summary of significant accounting policies and other explanatory information.

Management's Responsibility for the Financial Statements

Management is responsible for the preparation and fair presentation of these financial statements in accordance with Canadian public sector accounting standards, and for such internal control as management determines is necessary to enable the preparation of financial statements that are free from material misstatement, whether due to fraud or error.

Practitioners' Responsibility

Our responsibility is to express a conclusion on the accompanying financial statements based on our review. We conducted our review in accordance with Canadian generally accepted standards for review engagements, which require us to comply with relevant ethical requirements.

A review of financial statements in accordance with Canadian generally accepted standards for review engagements is a limited assurance engagement. The practitioner performs procedures, primarily consisting of making inquiries of management and others within the entity, as appropriate, and applying analytical procedures, and evaluates the evidence obtained.

The procedures performed in a review are substantially less in extent than, and vary in nature from, those performed in an audit conducted in accordance with Canadian generally accepted auditing standards. Accordingly, we do not express an audit opinion on these financial statements.

Conclusion

Based on our review, nothing has come to our attention that causes us to believe that the financial statements do not present fairly, in all material respects, the financial position of Assiniboine Watershed Stewardship Association Inc. as at March 31, 2024, and the results of its operations and its cash flows for the year then ended in accordance with Canadian public sector accounting standards.

Baker Tilly SK LLP

Baker Tilly SK LLP

Yorkton, SK
June 19, 2024

Assiniboine Watershed Stewardship Association Inc.

Yorkton, Saskatchewan

Statement of Financial Position as at March 31, 2024

	2024	2023
Assets		
Current Assets		
Cash and cash equivalents	780,129	675,699
Accounts receivable - note 4	11,984	1,666
Inventories	6,924	
Prepaid expenses	9,156	5,706
	<u>808,193</u>	<u>683,071</u>
Capital Assets - note 5	33,661	37,438
Other Assets		
Security deposits	<u>1,230</u>	<u>1,230</u>
	<u>\$ 843,084</u>	<u>\$ 721,739</u>
Liabilities and Net Assets		
Current Liabilities		
Accounts payable and accrued liabilities - note 6	24,208	9,496
Deferred revenue - note 7	418,710	356,156
	<u>442,918</u>	<u>365,652</u>
Long-Term Liabilities		
Long-term loans payable - note 8		30,000
Deferred revenue - note 9	248,902	194,181
	<u>248,902</u>	<u>224,181</u>
	<u>691,820</u>	<u>589,833</u>
Net Assets		
Invested in capital assets	(10,050)	(5,081)
Internally-restricted - SWAUMP	17,117	16,867
Internally-restricted - education and training	6,681	6,681
Unrestricted net assets	137,516	113,439
	<u>151,264</u>	<u>131,906</u>
	<u>\$ 843,084</u>	<u>\$ 721,739</u>

Approved on behalf of the board:



The notes to financial statements are an integral part of these financial statements.

Assiniboine Watershed Stewardship Association Inc.

Statement of Changes in Net Assets
For the year ended March 31, 2024

	Internally-Restricted					
	Invested in Capital Assets	SWAUMP	Education and Training	Unrestricted Net Assets	2024 Total	2023 Total
Balance (deficit), beginning of year	(5,081)	16,867	6,681	113,439	131,906	110,656
Excess (deficiency) of revenue over expenses for the year	(4,969)	(9,750)		34,077	19,358	21,250
Interfund transfer - SWAUMP		10,000		(10,000)		
Balance (deficit), end of year	<u>\$(10,050)</u>	<u>\$ 17,117</u>	<u>\$ 6,681</u>	<u>\$ 137,516</u>	<u>\$ 151,264</u>	<u>\$ 131,906</u>

*The notes to financial statements are an integral
part of these financial statements.*

Assiniboine Watershed Stewardship Association Inc.

Statement of Operations For the year ended March 31, 2024

	Unrestricted	Capital Assets	SWAUMP	Education and Training	2024	2023
Revenue						
Environment Canada	52,558				52,558	9,765
Water Security Agency	6,429				6,429	
Alternative Land Use Services (ALUS)	376,567				376,567	274,358
Wallace Creek Watershed	21,700				21,700	21,700
Yorkton Creek Watershed	15,000				15,000	20,488
Contract work	10,425				10,425	700
Membership fees	63,125				63,125	63,125
Rental and mulch income	2,100	6,250			8,350	3,105
Interest	11,475				11,475	5,184
Other	10,278				10,278	3,572
	<u>569,657</u>	<u>6,250</u>	<u>0</u>	<u>0</u>	<u>575,907</u>	<u>401,997</u>
Expenses						
Administration	790				790	524
Advertising and promotion	7,299				7,299	7,961
Amortization		5,389			5,389	7,290
Board of Directors travel and meals	18,330				18,330	15,039
Courses and seminars	2,828				2,828	3,893
Equipment rent and repairs	3,306				3,306	2,407
Insurance	2,676				2,676	2,581
Licenses and memberships	2,148				2,148	2,025
Loss on disposal of capital assets		536			536	
Meals	1,009				1,009	827
Mulch		5,294			5,294	2,449
Office, printing and postage	10,725				10,725	4,484
Professional fees	7,153				7,153	5,517
Projects	264,339		9,750		274,089	168,363
Rent - building	20,295				20,295	20,295
Supplies	235				235	
Telephone	3,117				3,117	3,065
Travel	9,062				9,062	7,573
Wages and benefits	182,268				182,268	126,455
	<u>535,580</u>	<u>11,219</u>	<u>9,750</u>	<u>0</u>	<u>556,549</u>	<u>380,748</u>
Excess (Deficiency) of Revenue Over Expenses for the Year						
	<u>\$ 34,077</u>	<u>\$(4,969)</u>	<u>\$(9,750)</u>	<u>\$ 0</u>	<u>\$ 19,358</u>	<u>\$ 21,249</u>

The notes to financial statements are an integral part of these financial statements.

Assiniboine Watershed Stewardship Association Inc.

Statement of Cash Flow
For the year ended March 31, 2024

	2024	2023
Cash Provided By (Used In):		
Operations		
Excess of revenue over expenses for the year	19,358	21,249
Add items not requiring cash resources		
Amortization	5,389	7,290
Loss on disposal of capital assets	536	
Change in long-term deferred revenue	54,720	88,311
Net change in working capital	<u>56,575</u>	<u>146,089</u>
	136,578	262,939
Investing activities		
Capital asset purchases	(2,148)	0
Financing activities		
Repayment of long-term loans	<u>(30,000)</u>	
Net Cash Increase for the Year	104,430	262,939
Cash position, beginning of year	<u>675,699</u>	<u>412,760</u>
Cash Position, End of Year	<u>\$ 780,129</u>	<u>\$ 675,699</u>
Represented By:		
Cash and cash equivalents	<u>\$ 780,129</u>	<u>\$ 675,699</u>
Net change in working capital consists of:		
Decrease (increase) - accounts receivable	(10,318)	16,624
- inventories	(6,924)	2,449
- prepaid expenses	(3,450)	(3,191)
Increase (decrease) - accounts payable and accrued liabilities	14,713	(14,375)
- other current liabilities	<u>62,554</u>	<u>144,582</u>
	<u>\$ 56,575</u>	<u>\$ 146,089</u>

*The notes to financial statements are an integral
part of these financial statements.*

Assiniboine Watershed Stewardship Association Inc.

Notes to Financial Statements
For the year ended March 31, 2024

1. Nature of Operations

The organization was incorporated on January 23, 2007 under the Non-Profit Corporations Act. The Assiniboine Watershed Stewardship Association Inc. works to protect and enhance source water in the Assiniboine River Watershed as guided by the Assiniboine River Watershed Water Protection Plan and the Yorkton Area Aquifers Source Water Protection Plan. The organization is not subject to income tax.

2. Significant Accounting Policies

These financial statements are the responsibility of management and have been prepared in accordance with Canadian public sector accounting (PSA) standards. Assiniboine Watershed Stewardship Association Inc. has adopted the standards for government not-for-profit organizations, set forth at PSA Handbook section PS 4200 to PS 4270.

(a) Cash and cash equivalents

Cash and cash equivalents represents cash on hand and cash held in banks.

(b) Inventories

Inventories are valued at the lower of cost and net realizable value. Cost is determined on a first-in, first-out basis. Net realizable value is the estimated selling price in the ordinary course of operations, less any applicable selling costs.

(c) Capital assets

Capital assets are recorded at cost less accumulated amortization.

The assets are amortized on a straight-line basis at the following rates:

Mobile equipment	10 years
Furniture, fixtures and equipment	5-30 years
Computer equipment	15 years
Computer software	5 years
Signage	20 years

In the year of purchase, capital assets are amortized at one-half the above rates.

(d) Revenue

The organization follows the deferral method of accounting for contributions. Restricted contributions, subject to external stipulations, are recognized as revenue in the year in which the related expenses are incurred. Restricted contributions for which the related restrictions remain unfulfilled are accumulated as deferred contributions. Unrestricted contributions are recognized as revenue when received or receivable if the amount can be reasonably estimated and collection is reasonably assured.

Deferred contributions are the portion of grants received prior to year end which relate to programs and services to be delivered after year end.

Contract revenue is recognized when the service is provided.

Members' fees are set annually by the board of directors and are recognized as revenue proportionately over the fiscal year to which they relate.

Assiniboine Watershed Stewardship Association Inc.

Notes to Financial Statements
For the year ended March 31, 2024

2. Significant Accounting Policies - continued

(d) Revenue - continued

Investment income comprised of interest from cash and fixed income investments are recognized on an accrual basis. Interest on fixed income investments is recognized over the terms of these investments using the effective interest method. Other investment income is recognized when it is received.

(e) Financial instruments

Measurement of financial instruments

The organization initially measures its financial assets and liabilities at fair value, except for certain non-arm's length transactions.

The organization subsequently measures all its financial assets and liabilities at amortized cost, except for investments in equity instruments that are quoted in an active market, which are measured at fair value. Changes in fair value are recognized in excess of revenue over expenses.

Impairment

Financial assets measured at cost are tested for impairment when there are indicators of impairment. The amount of the write-down is recognized in excess of revenue over expenses. The previously recognized impairment loss may be reversed to the extent of the improvement, directly or by adjusting the allowance account, provided it is no greater than the amount that would have been reported at the date of the reversal had the impairment not been recognized previously. The amount of the reversal is recognized in excess of revenue over expenses.

(f) Estimates

The preparation of financial statements in accordance with Canadian public sector accounting standards requires management to make estimates and assumptions that affect the reported amount of assets and liabilities and disclosure of contingent assets and liabilities at the date of the financial statements and the reported amount of revenues and expenses during the reported period. These estimates are reviewed periodically and, as adjustments become necessary, they are reported in the statement of operations in the period in which they became known.

Significant estimates have been made in the following financial statement areas:

- Useful life of capital assets
- Deferred revenues, accounts receivable and recognized grant revenues - the ultimate approval of the eligibility of expenditures relating to restricted grants lies with the granting body

Assiniboine Watershed Stewardship Association Inc.

Notes to Financial Statements
For the year ended March 31, 2024

3. Risks Arising from Financial Instruments

The organization is not exposed to significant risks through its financial instruments with the exception of credit risk.

Credit risk is the risk that one party to a financial instrument will cause a financial loss for the other party by failing to discharge an obligation. The organization is exposed to credit risk from the potential non-payment of accounts receivable.

	2024	2023
4. Accounts Receivable		
Accounts receivable are comprised of the following items:		
Accounts receivable	10,001	672
Goods and services tax receivable	1,983	994
	\$ 11,984	\$ 1,666

5. Capital Assets

	Cost	Accumulated Amortization	Net Book Value 2024	Net Book Value 2023
Mobile equipment	33,607	18,367	15,240	18,601
Furniture, fixtures and equipment	31,953	13,532	18,421	18,837
Computer equipment	6,205	6,205		
Signage	17,286	17,286		
	\$ 89,051	\$ 55,390	\$ 33,661	\$ 37,438

	2024	2023
6. Accounts Payable and Accrued Liabilities		
Accounts payable and accrued liabilities are comprised of the following items:		
Accounts payable	6,947	3,272
Government remittances	4,166	2,881
Accrued wages	13,095	3,343
	\$ 24,208	\$ 9,496

Assiniboine Watershed Stewardship Association Inc.

Notes to Financial Statements
For the year ended March 31, 2024

7. Deferred Revenue - Short-Term

	Balance, Beginning of Year	Less Amount Recognized	Plus Amount Received	Balance, End of Year
Department of the Environment Canada Revenue Agency - forgivable portion of CEBA	31,534	52,308	29,142	8,368
Ducks Unlimited Wetland Project Alternative Land Use Services (ALUS)	10,000	10,000		12,511
	12,511			
Water Security Agency - Well Decommission	294,470	261,351	363,500	396,619
	<u>7,641</u>	<u>6,429</u>		<u>1,212</u>
	<u>\$ 356,156</u>	<u>\$ 330,088</u>	<u>\$ 392,642</u>	<u>\$ 418,710</u>
			2024	2023

8. Long-Term Loans Payable

Loan payable - Cornerstone Credit Union
Maturity date - December 2023
Original amount - \$40,000
Purpose - Canada Emergency Business Account
Interest rate - 0%
Terms of repayment - repayable by January 18, 2024

Balance, end of year, net of \$10,000 forgivable portion	<u>\$ 0</u>	<u>\$ 30,000</u>
--	-------------	------------------

The federal government has introduced the Canada Emergency Business Account (CEBA) loan program as part of the emergency measures introduced in response to COVID-19. The organization obtained a \$40,000 CEBA loan in the year ending March 31, 2021. Details are as follows:

- 0% interest until January 18, 2024;
- principal repayments can be voluntarily made at any time without fees or penalties;
- \$10,000 in total loan forgiveness is available provided \$30,000 is repaid, or an application for refinancing is made, by January 18, 2024. The forgivable component has been recognized as income on a proportionate basis to the extent the organization has met the restrictions for the use of the funds.

If the balance is not paid, or an application for refinancing made, by January 18, 2024, the balance will be converted to a term loan at 5% annual interest with the full principal repayment due December 31, 2026.

Assiniboine Watershed Stewardship Association Inc.

Notes to Financial Statements
For the year ended March 31, 2024

8. Long-Term Loans Payable - continued

A summary of the measurement adjustments of the CEBA loan appears below:

	2024	2023
Loan issued	40,000	40,000
Forgivable portion	(10,000)	(10,000)
Repayments to date	<u>(30,000)</u>	<u> </u>
 Total	 <u>\$ 0</u>	 <u>\$ 30,000</u>

9. Deferred Revenue - Long-Term

	Balance, Beginning of Year	Less Amount Recognized	Plus Amount Received	Balance, End of Year
Alternative Land Use Services (ALUS)	<u>\$ 194,181</u>	<u>\$ 115,216</u>	<u>\$ 169,937</u>	<u>\$ 248,902</u>

10. Commitments

The organization leases premises which are located at 29, 2nd Avenue N., Yorkton, Saskatchewan. The lease agreement is for a three-year term commencing January 1, 2023 with an option to renew for one additional term. The lease calls for monthly payments of \$1,650 plus taxes.

11. Economic Dependence

The organization received 65% (2022 - 68%) of its operating revenue from Alternative Land Use Services and is economically dependent on them.

Assiniboine Watershed Stewardship Association Inc.

Notes to Financial Statements
For the year ended March 31, 2024

12. Restrictions on Net Assets

The accounts of the organization are maintained in accordance with the principles of fund accounting. For financial reporting purposes, accounts with similar characteristics have been combined in the following major funds:

(a) Unrestricted

The unrestricted fund reflects the primary operations of the organization including revenues received for operations and administration.

(b) Invested in capital assets

Invested in capital assets is a restricted fund that reflects the equity of the organization in capital assets. The capital fund includes revenues designated for the acquisition of capital assets and revenues received for rental of equipment. Expenses consist primarily of the amortization of capital assets and tree planting equipment expenses.

(c) Internally-restricted for SWAUMP

The Source Water and Urban Municipal Project (SWAUMP) reflects funds that have been approved by the board for use by municipalities for water management related projects. Municipalities will be selected for funding of \$5,000 each.

(d) Internally-restricted for education and training

The education and training reflects funds that have been approved by the board to be reserved to be used by staff for voluntary job related education and training via conferences, workshops, seminars, classes, etc.

13. Contractual Rights

Contractual rights are rights to economic resources arising from contracts or agreements that will result in an asset and revenue in the future.

Significant contractual rights of the organization for the current year include two contracts to provide administrative services to two watershed associations within its membership boundaries. Both of these contracts are from January 1, 2024 to December 31, 2024 and require quarterly payments of \$5,425 and \$3,750.



STEWARDSHIP  ASSOCIATION

2024 EDITION

Assiniboine Watershed Stewardship Association
29 - 2nd Avenue North
Yorkton, Saskatchewan
S3N 1G1
306-783-1696

www.assiniboinewatershed.com

