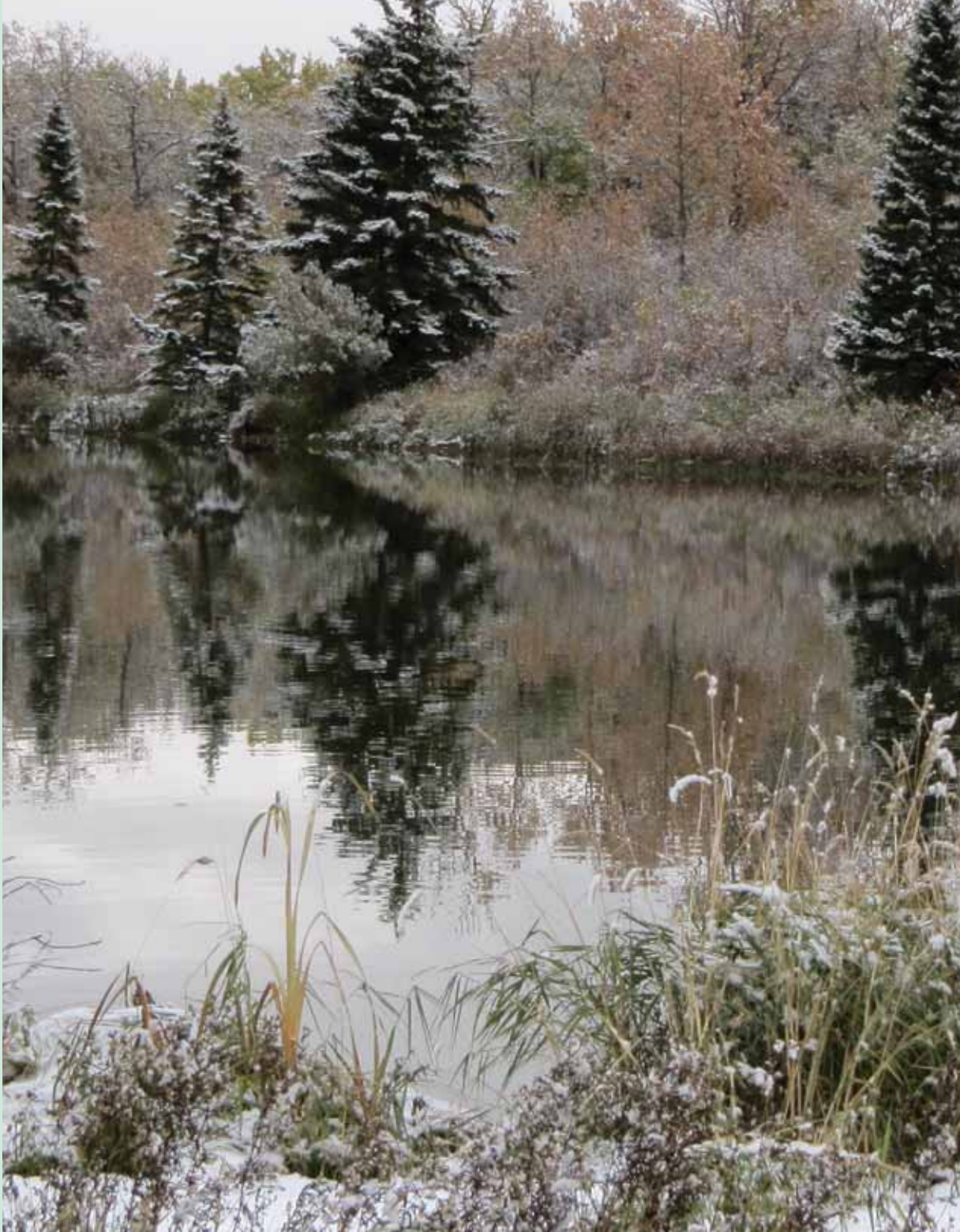




Assiniboine Watershed Stewardship Association

# 2014 Annual Report





**Table of Contents**

Acknowledgements ..... 1

Board Chair’s Message ..... 2

Watershed Manager’s Message ..... 3

Introduction ..... 4

The Association at a Glance ..... 5

Membership Representation ..... 6

AWSA Office & Staff ..... 7

Assiniboine River Watershed Map ..... 8

Yorkton Area Aquifers Map ..... 9

2014 Notable Events ..... 10

2014 Projects / Results ..... 12

2014 Council of the Federation, Excellence in Water Stewardship Award - Saskatchewan .... 13

Five Year Service Awards ..... 14

Agri - Environmental Group Plans & Farm Stewardship Program ..... 15

Summer Field Day ..... 18

Farm & Ranch Water Infrastructure Program (FRWIP) ..... 19

Decommissioning Abandoned Wells ..... 22

SWF Fish Enhancement Projects ..... 23

Wetland Restoration Program ..... 24

Culvert Infrastructure Mapping Program ..... 27

Logan Green Water Management System ..... 30

Logan Green Water Management System - Signage ..... 31

Logan Green Water Management System - Fish Release ..... 32

Good Spirit Lake Shoreline Revitalization Project ..... 33

Wallace Creek Watershed Association Board No.11 ..... 34

Assiniboine River Basin Initiative ..... 36

Poster Contest ..... 38

Pizza Farm ..... 40

Emergency Flood Damage Reduction Program ..... 41

Fine Lifestyles Magazine Article ..... 42

Outdoor Edge Magazine Article ..... 44

Assiniboine River Watershed - Scenery Pictures ..... 46

Wallace Creek Flight Pictures ..... 47

Yorkton Creek Flight Pictures ..... 48

Melville Flood Pictures ..... 50

Tree Planting Equipment Program ..... 52

SWF - Fish Enhancement Program ..... 53

Acronym List ..... 54

Auditors’ Report ..... 56



## **Acknowledgements**

The Assiniboine Watershed Stewardship Association (AWSA) would like to acknowledge our 37 “Grass Roots” members who truly value the importance of clean, fresh water and have made a considerable effort to protect this precious resource. Thank you for the past and present support towards the protection of the source waters in the Assiniboine River Watershed.

We also want to thank the board of directors, staff, advisory committees and the technical committee for their time, effort, and dedication towards the AWSA.

We would like to recognize the Water Security Agency for their financial support, guidance, and expertise in aiding us with our *Source Water Protection Plans* now and into the future.

We would also like to recognize Agriculture Canada, Ducks Unlimited Canada, Lake Winnipeg Basin Stewardship Fund - Environment Canada, Eco-Action - Environment Canada, Saskatchewan Association of Watersheds, Saskatchewan Ministry of Agriculture, Saskatchewan Ministry of Environment - Good Spirit Provincial Park and the Saskatchewan Wildlife Federation for their financial and technical support towards a shared interest in protecting source waters within the Assiniboine River Watershed.

## **Board Chair's Message**



Water security – the sustainable use and protection of water resources and protection against water-related hazards such as flooding and drought is one of the most pressing issues of our time. For the AWSA in 2014 the issue has been one of flooding.

The cities of Melville and Yorkton and surrounding R.M.'s saw horrendous flooding in 2014.

Preliminary work was initiated on *The Wallace Creek Watershed Project*. Flood protection and remediation work will start in late 2014 and carry on well into 2015. This project encompasses six R.M.'s and the Village of Rhein.

- Through the work of our AWSA Manager, Aron has been directly involved with the Assiniboine River Basin Initiative (ARBI). The ARBI includes three river watersheds – Assiniboine, Qu'Appelle and Souris Rivers. It covers part of south eastern Saskatchewan, south western Manitoba and northern North Dakota.
- The formation of the ARBI is in its early stages to becoming a legal entity. The current Planning Committee (that Aron sits on representing Saskatchewan) has been tasked with the responsibility of formulating a Board of Directors, drafting the incorporation papers (U.S. and Canada), writing a Mission and Vision Statement, drafting a set of bylaws, etc., etc. by the spring of 2015. The ARBI will be modelled after the Red River Basin Commission (32 years old).
- The need to manage water on a basin wide approach has come about as a result of the atrocious flooding in Manitoba in 2011 and 2014, and the devastating flood in Minot, North Dakota in 2011.

The need for controlled water management and engineered flood mitigation infrastructure works will become more prevalent now and in the future. This will become a major component of the AWSA's operations program, and we have to plan strategically and accordingly to capitalize on this challenge and opportunity when it arises.

The AWSA has come a long way since 2007, and we are certainly up to the task at hand of any challenge that the future may bring.

### Hydrotherapy: The Healing Power of Water

Did you know that hot water is relaxing, causing blood vessels to dilate and this helps remove waste from body tissues. On the other hand, cold water is a stimulation and causes superficial blood vessels to constrict shunting the blood flow to internal organs. Alternating hot and cold water improves elimination, decreases inflammation and stimulates circulation – perfect health depends on perfect circulation made possible by access to perfect high quality water.

Protection of our source water supplies is paramount to ensure continued good health into the future.

Don Olson  
Board Chair,  
Assiniboine Watershed Stewardship Association



## Watershed Manager's Message



This 2014 Annual Report highlights the accomplishments of the Assiniboine Watershed Stewardship Association (AWSA) for the year ending October 31<sup>st</sup> 2014.

I would like to thank our 37 member municipalities for their continued support. I would also like to acknowledge the support of the AWSA board of directors for their commitment to the AWSA and the Assiniboine River Watershed. I want to especially thank the AWSA staff; Jesse Nielsen, and Katelyn Smith for the excellent work they accomplished in 2014.

We pride ourselves as having one of the strongest memberships in the province, 37 in total. We continued to work hard for our members in 2014 and it proved to be a trying year for some municipalities and the agriculture industry once again in our watershed. The City of Melville was the hardest hit as a result of rain events in June and July, causing innumerable damage to infrastructure, land and personal property.

### 2014 Highlights:

- The AWSA was awarded with the prestigious 2014 Council of the Federation Excellence in Water Stewardship – Saskatchewan. We were also published in the *Fine Lifestyles* magazine and the *Outdoor Edge* magazine this year.
- I presented at the Saskatchewan Association of Watersheds Annual Conference, at RM ratepayer suppers and at various workshops and field tours throughout the year. I was also invited to be a part of the planning committee and elected as the executive member for Saskatchewan on the Assiniboine River Basin Initiative.
- The AWSA assisted the Water Security Agency with the provincial Emergency Flood Damage Reduction Program (EFDRP) following the flooding events SK experienced at the end of June.
- We continued our excellent work with the Farm & Ranch Water Infrastructure Program and the Farm Stewardship Program. We applied for 98 projects on 215 quarter sections totaling ~ \$600,000 in projects this year. We also continued our efforts on working with landowners with wetland restoration programs and we were able to restore 100.4 acres (39 wetlands) on 9 different quarters of land.
- We were very busy working with the newly established Wallace Creek Watershed Association. We toured the Sub-basin, devised plans and began channel maintenance and infrastructure works within the Wallace Creek watershed.
- We once again participated in the provincial Poster Contest for grades 5-7 students. We gave 11 in school presentations at 7 different schools, and we received 98 posters. We also continued our assistance with the “Pizza Farm”. This year we had the pleasure of working with one class from Canora and five Yorkton classes, totaling over 100 students.

This fiscal year was once again a busy and productive year for our association. I am looking forward to 2015 where we will continue to serve our members and strive to maintain and expand our working relationship with all stakeholders.

Aron Hershmillier  
Manager,  
Assiniboine Watershed Stewardship Association

## **Introduction**

This Annual Report outlines the Assiniboine Watershed Stewardship Association's activities over their 2014 fiscal year (Nov. 1, 2013 - Oct. 31, 2014). The projects and activities found throughout this report are governed by the association's vision statement, as written by its Board of Directors, and by the objectives, recommendations and key actions contained in the *Assiniboine River Watershed Source Water Protection Plan* and the *Yorkton Area Aquifers Source Water Protection Plan*.

Please visit the AWSA's website at: [www.assiniboinewatershed.com](http://www.assiniboinewatershed.com) for a full electronic version of this report along with more information on past and present reports and projects.

## **2014 Assiniboine Watershed Stewardship Association's Board of Directors**



Front Row L to R: Don Fogg, Don Olson, Grant McCallum, Tom Gall  
Back Row L to R: Garry Liebrecht, Wally Butterfield, Michael Buchholzer, Ernie Bodnarek, Ben Pengilly  
Missing: Dale Heshka, Al Schatz, Conrad Vogel



## **The Association at a Glance**

The Assiniboine Watershed Stewardship Association is an independent, non-profit organization committed to protecting source waters in the Assiniboine River Watershed. The association's vision is:

***Citizens and communities of the Assiniboine River Watershed working together to protect the source waters of the Assiniboine River, its tributaries and aquifers within the watershed.***

To fulfill this vision, the Association works in partnership with public and private stakeholders throughout the watershed to carry out projects that protect and enhance water sources. Much of this work focuses on the objectives, recommendations and key actions contained in the *Assiniboine River Watershed Source Water Protection Plan* and the *Yorkton Area Aquifers Source Water Protection Plan*. The Association's Board of Directors has also chosen to undertake some other initiatives, which are detailed in this Annual Report.

The business and affairs of the Association are managed by its Board of Directors. The Board is comprised of 12 members elected from three advisory committees: the Assiniboine River Advisory Committee, the Whitesand River Advisory Committee and the Yorkton Area Aquifers Advisory Committee. Each advisory committee elects four members to the Board.

### **The Assiniboine Watershed Stewardship Association's Board of Directors:**

Michael Buchholzer - City of Yorkton  
 Grant McCallum - Town of Saltcoats  
 Ernie Bodnarek - R.M. of Sliding Hills No. 273  
 Garry Liebrecht - R.M. of Wallace No. 243  
 Dale Heshka - City of Melville  
 Tom Gall - Town of Springside  
 Al Schatz - R.M. of Stanley No. 215  
 Ben Pengilly - R.M. of Cana No. 214  
 Don Olson - Town of Sturgis  
 Don Fogg - Town of Langenburg  
 Wallace Butterfield - R.M. of Keys No. 303  
 Conrad Vogel - R.M. of St. Philips No. 301

All Directors are elected for a two-year term at their respective Advisory Committee meetings. Directors are elected on a staggered two-year basis after the first meeting of the Advisory Committees. For the initial appointments, half of each Advisory Committee was appointed for two years and the other half for one year. These appointments were determined randomly.

All Directors may be re-elected and are not restricted as to the number of consecutive terms served.

The Board of Directors meet four times a year, and annually appoints a Chair, Vice-Chair and such other officers as the Board may determine.

The day-to-day business of the Association is conducted by the Watershed Manager. The Watershed Manager reports to the Board, and is granted such powers and duties as the Board may specify.

The Association receives operating revenue in the form of a grant from the Water Security Agency. The Association also receives revenues from its paid membership. The membership currently consists of the following 37 local municipalities:

City of Melville	City of Yorkton
Town of Canora	Town of Churchbridge
Town of Kamsack	Town of Langenburg
Town of Preeceville	Town of Saltcoats
Town of Springside	Town of Sturgis
Village of MacNutt	Village of Rhein
Village of Theodore	
R.M. of Langenburg #181	R.M. of Churchbridge #211
R.M. of Saltcoats #213	R.M. of Cana #214
R.M. of Stanley #215	R.M. of Calder #241
R.M. of Wallace #243	R.M. of Orkney #244
R.M. of Garry #245	R.M. of Ituna Bon Accord #246
R.M. of Cote #271	R.M. of Sliding Hills #273
R.M. of Good Lake #274	R.M. of Insinger #275
R.M. of Foam Lake #276	R.M. of St.Philips #301
R.M. of Keys #303	R.M. of Buchanan #304
R.M. of Invermay #305	R.M. of Livingston #331
R.M. of Clayton #333	R.M. of Preeceville #334
R.M. of Hazel Dell #335	R.M. of Sasman #336

## Membership Representation

### 2014 Board of Directors

<b>Don Olson</b> Board Chair	Town of Sturgis
<b>Don Fogg</b> Board Vice Chair	Town of Langenburg
<b>Dale Heshka</b>	City of Melville
<b>Michael Buchholzer</b>	City of Yorkton
<b>Ben Pengilly</b>	R.M. of Cana No. 214
<b>Ernie Bodnarek</b>	R.M. of Sliding Hills No. 273
<b>Wallace Butterfield</b>	R.M. of Keys No. 303
<b>Al Schatz</b>	R.M. of Stanley No. 215
<b>Conrad Vogel</b>	R.M. of St. Philips No. 301
<b>Garry Liebrecht</b>	R.M. of Wallace No. 243
<b>Grant McCallum</b>	Town of Saltcoats
<b>Tom Gall</b>	Town of Springside

### 2014 Staff Members

**Aron Hershmillier** – Watershed Manager  
**Jesse Nielsen** – Aquifer/Watershed Coordinator  
**Katelyn Smith** – Technician / Administration

### Assiniboine River Advisory Committee

**Marlo Schappert** – R.M. of Langenburg No. 181  
**Neil Mehrer** – R.M. of Churchbridge No. 211  
**Melvin Woloschuk** - R.M. of Calder No. 241  
**Ken Kalmakoff** – R.M. of Cote No. 271  
**Conrad Vogel** – R.M. of St.Philips No. 301  
**Wallace Butterfield** – R.M. of Keys No. 303  
**Ted Klimm** – R.M. of Livingston No. 331  
**Wayne Barsby** – R.M. of Clayton No. 333  
**Darcy Rediger** – R.M. of Preeceville No. 334  
**Cameron Last** – R.M. Hazel Dell No. 335  
**Russ Thies** – Town of Churchbridge  
**Brian Earl** – Town of Kamsack  
**Don Fogg** – Town of Langenburg  
**Johnny Petryshyn** – Town of Preeceville  
**Don Olson** – Town of Sturgis  
**Shayne Wagner** – Village of MacNutt

### Whitesand River Advisory Committee

**Dale Heshka** – City of Melville  
**Michael Buchholzer** – City of Yorkton  
**Sylvester Hryniw** – Town of Canora  
**Tom Gall** – Town of Springside  
**Grant McCallum** – Town of Saltcoats  
**Kim Hyshka** – Village of Rhein  
**Nick Lastiwka** – Village of Theodore  
**Joe Skitcko** – R.M. of Saltcoats No. 213  
**Ben Pengilly** – R.M. of Cana No. 214  
**Al Schatz** – R.M. of Stanley No. 215  
**Garry Liebrecht** – R.M. of Wallace No. 243  
**Dale Hackman** – R.M. of Orkney No. 244  
**Anthony Chambers** – R.M. of Garry No. 245  
**Philip Buczulak** – R.M. of Ituna Bon Accord No. 246  
**Ernie Bodnarek** – R.M. of Sliding Hills No. 273  
**James Hupka** – R.M. of Good Lake No. 274  
**Dwayne Kitzan** – R.M. of Insinger No. 275  
**Grant Faye** – R.M. of Foam Lake No. 276  
**Lorne Olynyk** – R.M. of Buchanan No. 304  
**Jack Prychak** – R.M. of Invermay No. 305  
**Nevin Morrow** – R.M. of Sasman No. 336

### Yorkton Area Aquifers Advisory Committee

**Michael Buchholzer** – City of Yorkton  
**Grant McCallum** – Town of Saltcoats  
**Joe Skitcko** – R.M. of Saltcoats No. 213  
**Ben Pengilly** – R.M. of Cana No. 214  
**Garry Liebrecht** – R.M. of Wallace No. 243  
**Dale Hackman** – R.M. of Orkney No. 244

### Technical Committee Members

**Trevor Plews** -Ducks Unlimited Canada  
**Nolan Johnson** - Ducks Unlimited Canada  
**Jodie Horvath** -Ducks Unlimited Canada  
**Adam Matichuk** - Saskatchewan Wildlife Federation  
**Brian Campbell** - Saskatchewan Ministry of Agriculture  
**Naomi Paley** - Saskatchewan Ministry of Agriculture  
**Charlotte Ward** - Saskatchewan Ministry of Agriculture  
**Lyndon Hicks** - Saskatchewan Ministry of Agriculture  
**Jason Puckett** - Water Security Agency  
**Warren Thomson** - Water Security Agency  
**Rick Jasper** - Water Security Agency  
**Glen Merkley** - Water Security Agency

## **AWSA Office & Staff**

The Assiniboine Watershed Stewardship Association (AWSA) office is located on 29, 2<sup>nd</sup> Avenue North in Yorkton, Saskatchewan. Our office hours are Monday to Friday from 8:00am to 5:00pm (closed over the noon hour).

The AWSA moved to this location in 2009, a distinction that has provided our association with a strong individual identity. Located in Yorkton's downtown business district, our office is only one block away from Yorkton City Hall and three blocks from the RM of Orkney and Wallace offices. It is also located in close proximity to Canada Post, and many local businesses and banks, making it an ideal location.

### **2014 AWSA Staff**

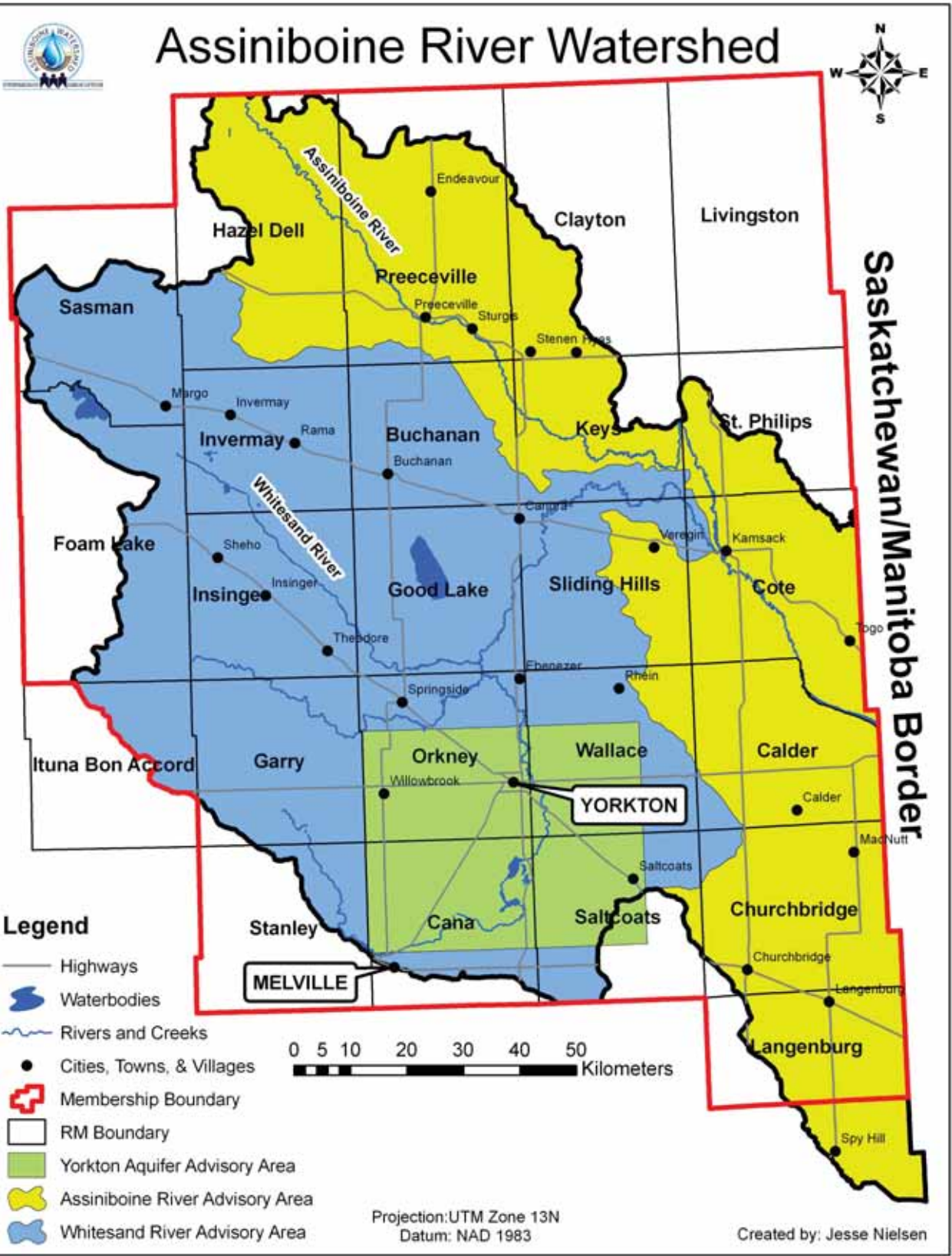
**Jesse Nielsen**  
Coordinator

**Katelyn Smith**  
Technician

**Aron Hershmillier**  
Manager









### Location and extent of major aquifers in the Yorkton study area

#### Aquifer extents

- Bredonbury (Durawalla) aqs.
- Bredonbury aqs.
- Colwell aqs.
- Erpress Cp. aqs.
- Leach Lake aqs.
- Logan North aqs.
- Logan South aqs.
- Logan Valley aqs.
- Oxide aqs.
- Clifton aqs.
- Shurtle aqs.
- Unnamed Bredonbury Fm. aqs.
- Unnamed Erpress Cp. aqs.
- Unnamed Logan aqs.
- Willowbrook "N" aqs.
- Willowbrook aqs.

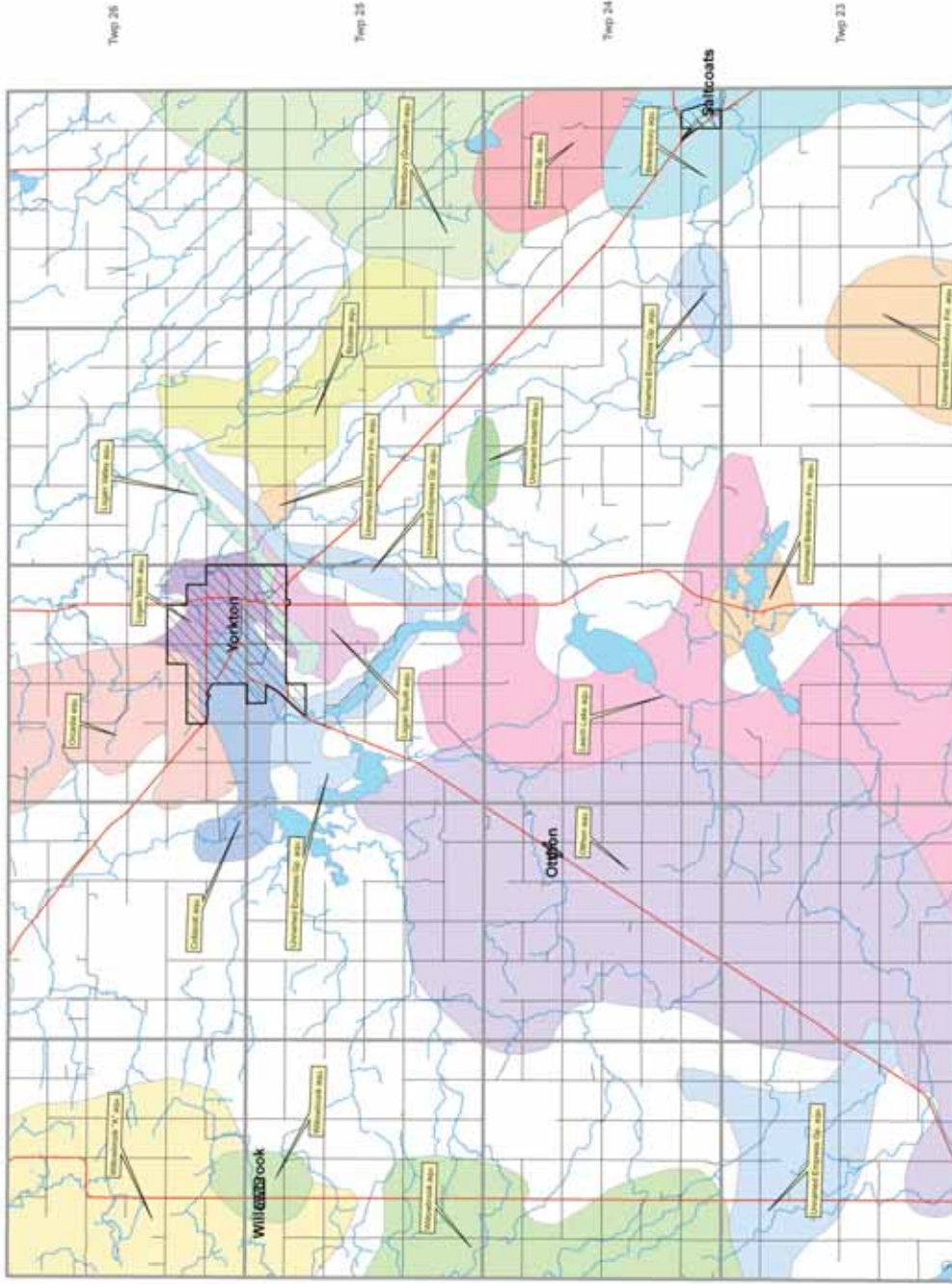
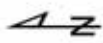


These maps are accompanied by a series of cross sections which depict the subsurface geology along the transects shown on the maps. The cross sections are oriented in the same direction as the maps. This hydrogeological study was conducted in the Yorkton study area, and may not be representative of other areas in the province. The maps are intended to provide a general overview of the aquifer resources in the Yorkton study area, and are not intended to be used for detailed site-specific studies. The maps are intended to provide a general overview of the aquifer resources in the Yorkton study area, and are not intended to be used for detailed site-specific studies.

This document is the property of the Saskatchewan Research Council. It is loaned to you for your use only. It is not to be reproduced, stored in a retrieval system, or transmitted, in any form or by any means, electronic, mechanical, photocopying, recording, or by any information storage and retrieval system, without the prior written permission of the Saskatchewan Research Council. SAC Publication No. 1311-14-0208

Map compilation: 2008

Map scale: 1:50,000  
Map projection: UTM  
Map datum: NAD 83





## **2014 Notable Events**

1. November 13th - AWSA staff worked SAW booth at the Canadian Western Agribition
2. November 20th and 21st - Attended FSP/FRWIP conference in Saskatoon, SK.
3. November 27th - AWSA board meeting
4. November 28th - FSP/FRWIP Technical Review Committee meeting
5. December 19th - FSP/FRWIP Technical Review Committee meeting
6. January 10th - Janna Foster Willfong meeting - SK Climate Change Adaptation Case Study
7. January 21st - Poster contest presentation at St. Michael's School in Yorkton, SK.
8. January 21st - Poster contest presentation at Yorkdale Central School in Yorkton, SK.
9. January 23rd - Poster contest presentation at St. Michael's School in Yorkton, SK.
10. January 28th - FRWIP/AEGP technical review committee meeting
11. January 29th - Poster contest presentation at Sturgis Comprehensive Institute in Sturgis, SK.
12. February 3rd - Verified beef production workshop in Theodore, SK.
13. February 4th - Poster contest presentation at Kamsack Comprehensive Institute in Kamsack, SK.
14. February 5th - Good Spirit Lake Watershed Association Board Meeting
15. February 7th - Assiniboine River Basin Commission (ARBC) conference call
16. February 7th - Poster contest presentation at St. Henry's Senior School in Melville, SK.
17. February 11th - Pasture management workshop
18. February 11th - Wallace Creek Watershed Association board meeting
19. February 12th - Poster contest presentation at Langenburg High School in Langenburg, SK.
20. February 13th - Producer's appreciation night banquet and booth in Yorkton, SK.
21. February 21st - Assiniboine River Basin Initiative (ARBI) conference call
22. February 25th - Yorkton Aquifer, Whitesand River and Assiniboine River Advisory committee meetings
23. February 25th - AWSA annual general meeting
24. February 25th - AWSA board meeting
25. February 26th - Pasture management workshop
26. February 27th - Meeting with City of Yorkton, Water Security Agency, Yorkton Wildlife Federation, and Saskatchewan Wildlife Federation regarding Yorkton Logan Green Project
27. March 5th - Wallace Creek Watershed Association board meeting
28. March 7th - Assiniboine River Basin Initiative (ARBI) conference call
29. March 13th - Logan Green signage meeting
30. March 19th - Ag Canada Wetland DEM Ponding Model Workshop in Saskatoon, SK.
31. March 19th - 21st - Saskatchewan Association of Watersheds annual conference in Saskatoon, SK. The AWSA received 2014 Council of the Federation Excellence in Water Stewardship Award at the conference



AWSA Annual General Meeting, Yorkton - February 25, 2014

## **2014 Notable Events**

32. March 26th - Assiniboine River Basin Initiative (ARBI) workshop in Virden, MB.
33. March 27th - FRWIP/AEGP technical review committee meeting
34. March 31st - LIRA Workshop in Regina, SK.
35. April 10th - Meeting with the Mayor of Preeceville, SK. regarding flooding concerns
36. April 16th - RM of Garry Rate Payers supper AWSA/AEGP/FRWIP presentation
37. April 28th - Leafy Spurge Webinar
38. May 7th - AWSA Board Meeting
39. May 12th - Spoke to U of S researchers regarding wetland drainage research in our watershed; spoke to producers to get possible sampling sites for the researchers
40. May 14th - Toured Wallace Creek watershed with WSA staff
41. May 15th - FRWIP/AEGP technical review committee meeting
42. May 15th - MOA Pizza Farm tour
43. May 16th - TV spot
44. May 16th - Assiniboine River Basin Initiative (ARBI) conference call
45. May 22nd - Meeting with U of S researchers at our office prior to them heading out for sampling
46. May 26th - AEGP technicians meeting in Regina, SK.
47. May 27th and 28th - Back to the Field Workshop in Lumsden, SK.
48. May 27th - Ministry of Highways Wetland Mitigation Project meeting in Regina, SK.
49. May 30th - Assiniboine River Basin Initiative (ARBI) conference call
50. June 4th - Stocked Logan Green fish pond with 750 fingerling Rainbow Trout
51. June 10th - Performed culvert mapping for the town of Kamsack, SK.
52. June 10th - TV spot
53. June 12th and 13th - Planting days with students at MOA Pizza Farm
54. June 17th - Staff field visit to DUC's Touchwood Hills Ranch grand opening and unveiling
55. June 20th - Attended a Yorkton Planning District Meeting; AWSA appointed to the committee
56. June 20th - Saskatchewan Association of Watersheds Managers conference call
57. June 24th - Wallace Creek Watershed Association meeting
58. June 26th - Partnered with MOA and DU for AEGP/FRWIP summer field day 'Cows, Grass & Water'
59. July 24th - RM of Wallace meeting at Water Security Agency
60. July 24th - Good Spirit Watershed Association Board meeting at Burgis Beach, SK.
61. July 30th - Wallace Creek Watershed Association meeting in Yorkton, SK.
62. August 6th - Assiniboine River Basin Initiative (ARBI) meeting in Minot, ND.
63. August 7th - Saskatchewan Pasture Tour at various locations
64. August 8th - Saskatchewan Farm Stewardship Association meeting at AWSA office
65. August 14th - FRWIP/AEGP technical review committee meeting
66. August 15th - Yorkton District Planning Commission meeting in Yorkton, SK.
67. August 19th - Wallace Creek Watershed Association meeting in Yorkton, SK.
68. August 20th - AWSA board meeting
69. August 29th - Assiniboine River Basin Initiative (ARBI) conference call
70. September 5th - Ducks Unlimited Canada meeting of Directors and presentation at Conner's Ranch
71. September 10th - Inspection of Town of Springside flooding concerns
72. September 11th - FRWIP/AEGP technical review committee meeting
73. September 16th - 18th - Ministry of Agriculture Pizza Farm
74. September 23rd - Assiniboine River Basin Initiative (ARBI) meeting in Yorkton, SK.
75. September 25th - Good Spirit Watershed Association meeting in Canora, SK.
76. September 25th - Meeting with Maple Farm Equipment Precision Ag staff
77. September 29th - Assiniboine River Basin Initiative (ARBI) meeting in Regina, SK.
78. October 1st - Groundwater Workshop in Saskatoon, SK.
79. October 2nd - Watershed Managers Conference Call
80. October 2nd - Yorkton District Planning Commission meeting in Yorkton, SK.
81. October 2nd - Delta Waterfowl/ALUS conference call
82. October 10th - Assiniboine River Basin Initiative (ARBI) conference call
83. October 14th - FRWIP/AEGP technical review committee meeting
84. October 15th - LWBSF Project inspection tour
85. October 17th - Good Spirit Lake Watershed Association Meeting
86. October 17th - In the field working on the Good Spirit Lake outlet structure
87. October 20th - Proposed several new BMP's for the Farm Stewardship Program
88. October 23rd - Watershed Managers conference call
89. October 23rd - New partnership with Manitoba company '*Precision Weather Solutions*' - Demo & infield setup of remote weather station
90. October 29th - Wallace Creek Watershed Association Board meeting
91. October 31st - Yorkton Creek Watershed Association Board meeting

## **2014 Projects / Results**

The following chart illustrates the members we worked with and the amount of project funding the AWSA distributed throughout the Assiniboine River Watershed in 2014.

1. Water Security Agency (WSA) / Ministry of Agriculture ( MOA) Project Administration Funding
2. Agri-Environmental Group Plan (AEGP) Program
3. Farm & Ranch Water Infrastructure (FRWIP) Program
4. Wetland Restoration Programs
5. Saskatchewan Wildlife Federation (SWF) Water Projects / Good Spirit Lake Shoreline Project
6. Culvert Mapping / Flood Mapping
7. Emergency Flood Damage Reduction Program
8. Logan Green Water Management System / Poster Contest / Pizza Farm
9. Wallace Creek Watershed Association

<b>Members</b>	<b>1</b>	<b>2</b>	<b>3</b>	<b>4</b>	<b>5</b>	<b>6</b>	<b>7</b>	<b>8</b>	<b>9</b>	<b>Totals</b>
Village of MacNutt	\$2,541						\$465			\$3,006
Village of Rhein	\$2,541						\$465		\$3,870	\$6,876
Village of Theodore	\$2,541						\$465			\$3,006
Town of Canora	\$2,541						\$465	\$500		\$3,506
Town of Churchbridge	\$2,541						\$465			\$3,006
Town of Kamsack	\$2,541					\$1,000	\$465	\$500		\$4,506
Town of Langenburg	\$2,541						\$465	\$500		\$3,506
Town of Preeceville	\$2,541						\$465			\$3,006
Town of Saltcoats	\$2,541						\$465			\$3,006
Town of Springside	\$2,541					\$1,000	\$465			\$4,006
Town of Sturgis	\$2,541						\$465	\$500		\$3,506
City of Melville	\$2,541						\$465	\$500		\$3,506
City of Yorkton	\$2,541						\$465	\$9,000		\$12,006
R.M. of Langenburg	\$5,336		\$18,459				\$465			\$24,261
R.M. of Churchbridge	\$5,336	\$19,550	\$18,159				\$465		\$3,870	\$47,380
R.M. of Saltcoats	\$5,336	\$8,050	\$5,650				\$465		\$3,870	\$23,371
R.M. of Cana	\$5,336	\$51,114					\$465			\$56,916
R.M. of Stanley	\$5,336	\$14,475	\$9,430				\$465			\$29,707
R.M. of Calder	\$5,336	\$11,202	\$16,200	\$68,000			\$465		\$3,870	\$105,073
R.M. of Wallace	\$5,336	\$22,810					\$465		\$3,870	\$32,481
R.M. of Orkney	\$5,336	\$86,524	\$35,057	\$17,600			\$465			\$144,982
R.M. of Garry	\$5,336	\$13,339	\$9,863	\$31,000			\$465			\$60,002
R.M. of Ituna Bon Accord	\$5,336	\$6,294					\$465			\$12,095
R.M. of Cote	\$5,336		\$8,668				\$465			\$14,469
R.M. of Sliding Hills	\$5,336	\$31,164					\$465		\$3,870	\$40,835
R.M. of Good Lake	\$5,336	\$38,010	\$1,295	\$50,600	\$7,280		\$465			\$102,986
R.M. of Insinger	\$5,336	\$21,424			\$2,500		\$465			\$29,726
R.M. of Foam Lake	\$5,336	\$6,834	\$13,031				\$465			\$25,666
R.M. of St.Philips	\$5,336						\$465			\$5,801
R.M. of Keys	\$5,336						\$465			\$5,801
R.M. of Buchanan	\$5,336		\$16,705		\$2,500		\$465			\$25,006
R.M. of Invermay	\$5,336				\$2,500		\$465			\$8,301
R.M. of Livingston	\$5,336						\$465			\$5,801
R.M. of Clayton	\$5,336		\$38,273	\$33,600			\$465			\$77,674
R.M. of Preeceville	\$5,336						\$465			\$5,801
R.M. of Hazel Dell	\$5,336	\$5,968	\$40,094				\$465			\$51,864
R.M. of Sasman	\$5,336	\$19,153	\$12,780				\$465			\$37,734
<b>Totals</b>	<b>\$161,095</b>	<b>\$355,910</b>	<b>\$243,663</b>	<b>\$200,800</b>	<b>\$14,780</b>	<b>\$2,000</b>	<b>\$17,216</b>	<b>\$11,500</b>	<b>\$23,220</b>	<b>\$1,030,184</b>

## 2014 Council of the Federation, Excellence in Water Stewardship Award - Saskatchewan

The Assiniboine Watershed Stewardship Association (AWSA) was awarded with the prestigious **2014 Council of the Federation, Excellence in Water Stewardship Award - Saskatchewan**, at the annual Saskatchewan Association of Watersheds conference in March. The award was created by Canada's premiers at the Council of the Federation in recognition that water is critical to human and ecosystem health. This award is presented annually to a deserving recipient in each Canadian province and territory.



L to R - Corey Tocher, MLA - Saskatoon Eastview presenting to Aron Hershmillier - AWSA Manager.

L to R - Don Olson - AWSA Board Chair, Aron Hershmillier - AWSA Manager, Jesse Nielsen - AWSA Coordinator.





## Five Year Service Awards

The Assiniboine Watershed Stewardship Association (AWSA) annually recognizes any board members and staff members for completing the tremendous milestone of five years of service to the AWSA. The AWSA recognized Wally Butterfield - RM of Keys, for serving 5 years on the AWSA Board at its 2014 Annual General Meeting.

L to R: Wally Butterfield & Aron Hershmilller - AWSA Manager



### Past Recipients

- |                                |                    |      |
|--------------------------------|--------------------|------|
| 1. Don Olson – Board Chair     | Town of Sturgis    | 2013 |
| 2. Don Fogg – Board Vice-Chair | Town of Langenburg | 2013 |
| 3. Al Schatz                   | RM of Stanley      | 2013 |
| 4. Ben Pengilly                | RM of Cana         | 2013 |
| 5. Dale Heshka                 | City of Melville   | 2013 |
| 6. Garry Liebrecht             | RM of Wallace      | 2013 |
| 7. Grant McCallum              | Town of Saltcoats  | 2013 |
| 8. Tom Gall                    | Town of Springside | 2013 |
| 9. Aron Hershmilller           | AWSA Manager       | 2013 |



## **Agri – Environmental Group Plan (AEGP) Program & Farm Stewardship Program (FSP)**

The FSP and AEGP programs provide eligible Saskatchewan producers with financial assistance to implement beneficial management practices (BMPs) to help maintain or improve the quality of soil, water, air, or biodiversity resources. The AWSA will be assisting with the delivery of this program until 2018.

A BMP is defined as any agricultural management practice which:

- Ensures the long-term health and sustainability of land-related resources used for agricultural production;
- Positively impacts the long-term economic and environmental viability of agricultural production; and
- Minimizes negative impacts and risk to the environment.

The program includes 19 BMPs under six categories:

### **Livestock Site Management;**

- BMP – Relocation of Livestock Confinement Facilities
- BMP – Fencing to Protect Surface Water
- BMP – Farmyard Run-off Control
- BMP – Riparian Area Grazing Management and Fencing

### **Manure Management;**

- BMP – Manure Storage Enhancements\*\*
- BMP – Manure Application Equipment and Technologies\*\*

### **Land Management;**

- BMP – Natural Waterway Erosion Control
- BMP – Creek and Stream Crossings
- BMP – Protecting High Risk Erodible and Saline Soils
- BMP – Native Plant Establishment
- BMP – Shelterbelt Establishment\*\*
- BMP – Used Oil, Filter and Fluid Storage\*\*
- BMP – Multi-Producer Erosion Control

### **Pest Management;**

- BMP – Integrated Pest Management Information Collection and Planning\*\*

### **Irrigation Management;**

- BMP – Irrigation Management Planning\*\*
- BMP – Irrigation Equipment Modification\*\*
- BMP – Variable Rate Irrigation Technology\*\*

### **Precision Farming;**

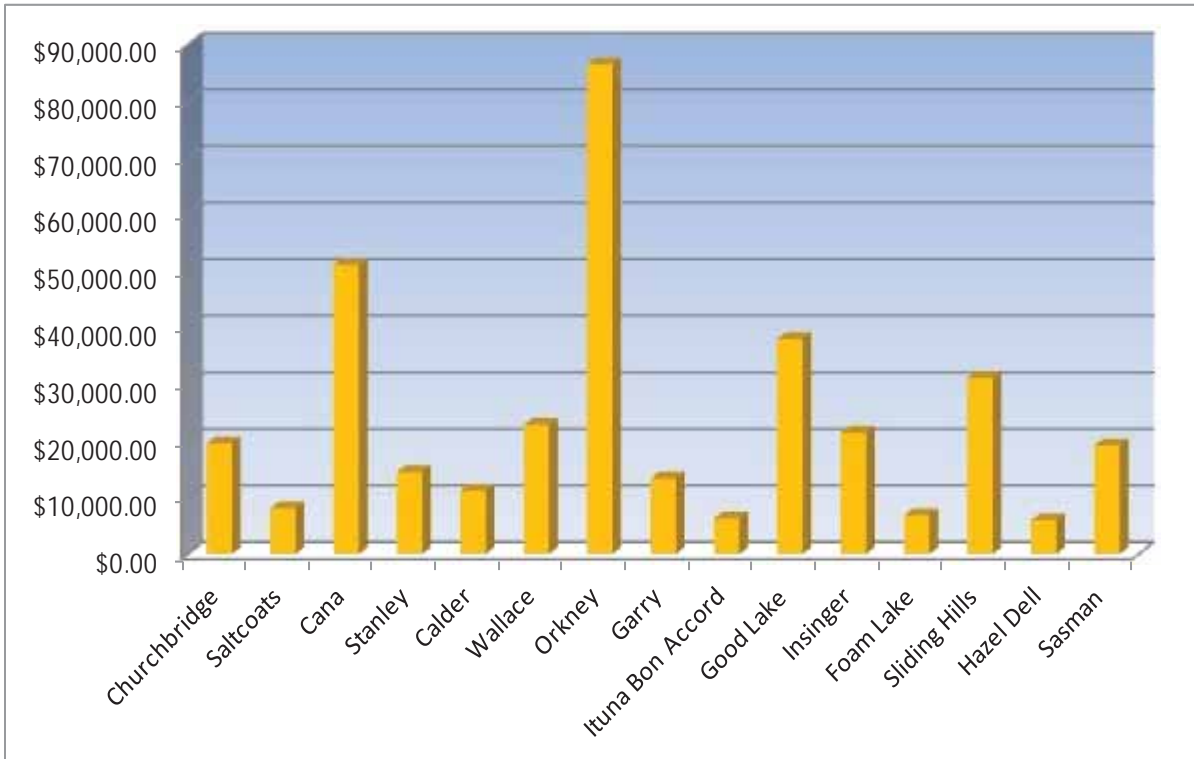
- BMP – Variable Rate Fertilizer Equipment
- BMP – Variable Rate Mapping

**\*\* BMP's that Require and individual Environmental Farm Plan (EFP)**



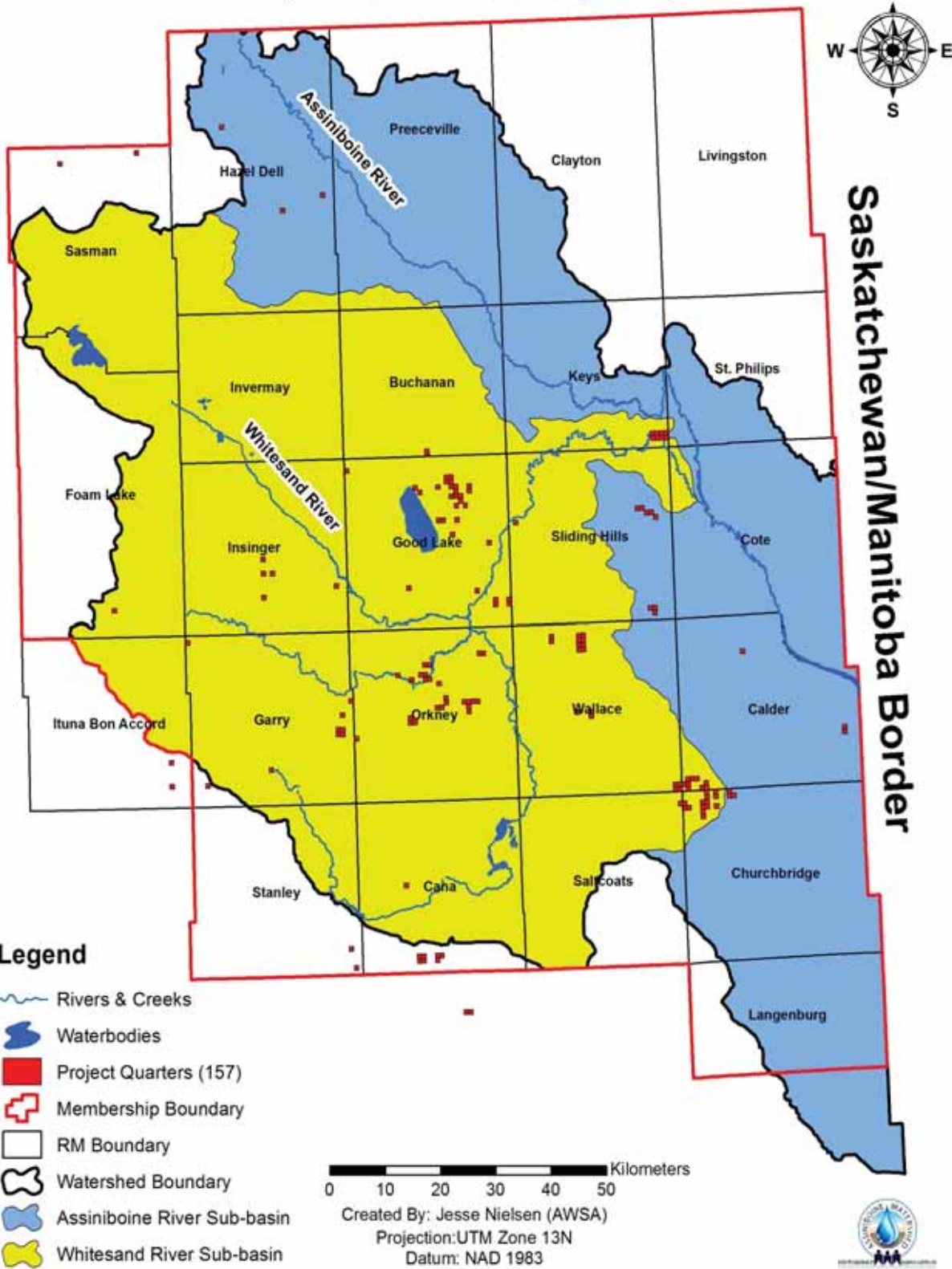
## Agri – Environmental Group Plan (AEGP) Program & Farm Stewardship Program (FSP)

As of year end, we submitted 48 project applications for an approximate total of \$355,909.78 in projects, on 157 quarter sections of land.



Rural Municipality	Project Cost Totals	Project Applications
Churchbridge	\$19,550.00	1
Saltcoats	\$8,050.00	1
Cana	\$51,114.49	2
Stanley	\$14,474.90	2
Calder	\$11,201.59	2
Wallace	\$22,809.50	3
Orkney	\$86,524.29	8
Garry	\$13,338.53	5
Ituna Bon Accord	\$6,293.82	2
Good Lake	\$38,009.65	7
Insinger	\$21,424.32	5
Foam Lake	\$6,833.91	1
Sliding Hills	\$31,163.96	3
Hazel Dell	\$5,967.86	4
Sasman	\$19,152.96	2
<b>Totals</b>	<b>\$355,909.78</b>	<b>48</b>


# AWSA Total Farm Stewardship Program Project Locations (Nov.1, 2013 - Oct. 31, 2014)





# Summer Field Day

The AWSA, DUC and the Ministry of Agriculture co-hosted an agricultural field day this past summer for producers in the Theodore area. AWSA staff, presented on the AEGP and FRWIP programs. The weather was beautiful and the event was well attended and enjoyed by all.




**WATER, GRASS and COWS**  
**Livestock and Forage Field Day**  
 Thursday, June 26, 2014, Theodore, SK  
 Site Location:  
 From Theodore: 4 miles East, 3 ¼ Miles North  
 From Springside: 6 miles North on Hwy #47, 4 miles West, 3 ¼ miles North  
 Watch for Signs!

**AGENDA**  
 10 a.m. Registration  
 10:30 a.m. to 3 p.m. Field Tour

Topics include:

- Winter Site Relocation
- Scouting for Alfalfa Weevils
- Forage Fertility
- Mineral Programs on Pasture
- Riparian Area Grazing Management
- Livestock Watering Systems
- Funding Opportunities for Producers (Farm Stewardship Program BMPs, Farm and Ranch Water Infrastructure Program & others)

Please pre-register by  
 June 23, 2014 by calling  
 306-786-1531  
 Cost is \$10 includes lunch



**LIVESTOCK AGRICULTURE**



## **Farm & Ranch Water Infrastructure Program (FRWIP)**

The AWSA assisted with the delivery of the Farm and Ranch Water Infrastructure Program (FRWIP) from 2013 and will continue to assist producers with this program until 2018. FRWIP supports the development of secure water supplies in Saskatchewan to expand irrigated acres, the livestock industry, encourage rural economic activity and mitigate the impacts of drought under four program categories:

- On-Farm
- Agricultural Business Development
- Community Well
- Irrigation District

### **Eligibility**

Farmers, Ranchers, First Nations Bands, Rural Municipalities and Irrigation Districts across Saskatchewan are eligible to apply for funding to develop eligible projects.

- Wells
  - ⇒ New Small & Large Diameter
  - ⇒ RM Tank Loading Stations
- Dugouts
  - ⇒ New and Expansions
- Remote/Offsite Cattle Watering Systems
  - ⇒ Solar, Nose Pumps, Wet-Well Systems, Etc.
- Shallow/Deep Buried Pipelines
  - ⇒ In-Pasture Cattle Watering
- Decommissioning Abandoned Wells
  - ⇒ Completed by a Qualified Contractor
- Protecting Existing Wells
  - ⇒ Earth Work and Landscaping

### **Funding Levels**

Producers: 50% funding to a max of \$60,000

RMs: 2/3 of project costs to a max of \$150,000

\* Well Decommissioning: 90% funding to a max of \$10,000/project (does not count against applicant's overall program cap)

### **Producer Eligibility Criteria**

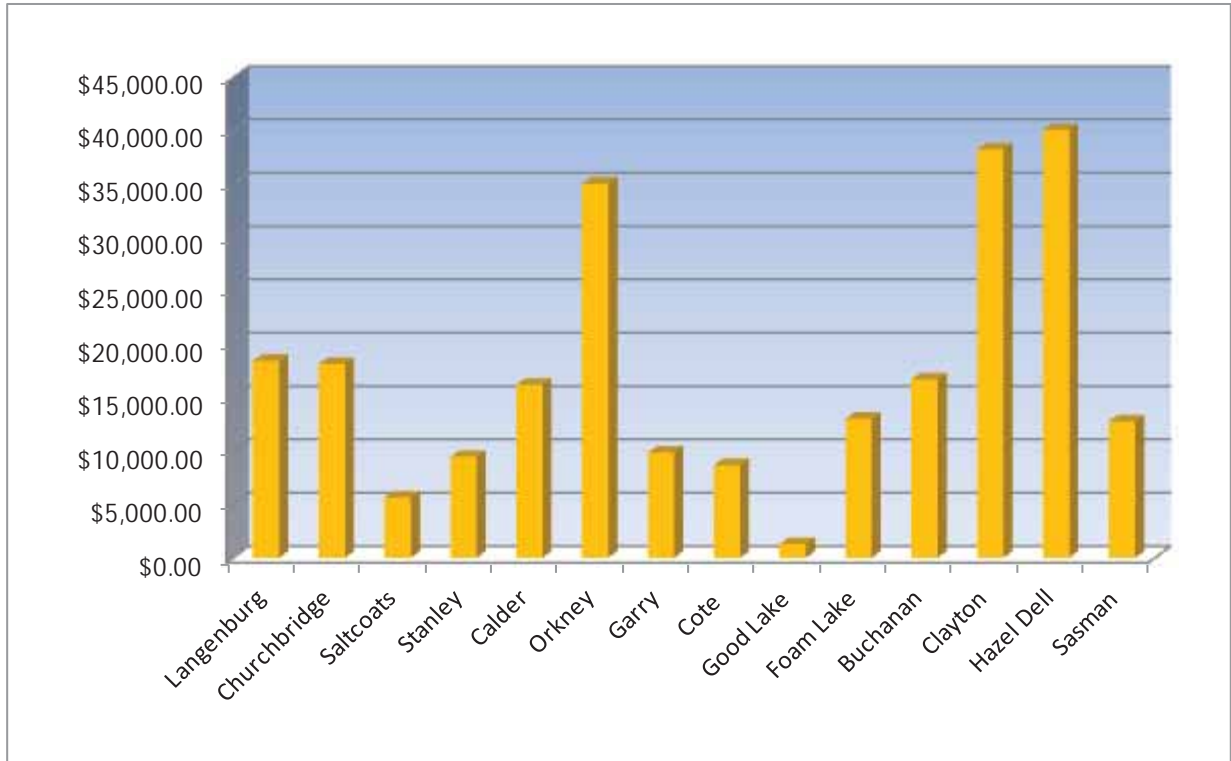
- Own a min of 320 acres of farmland
- Earn a min of \$35,000 gross farm income per year





## **Farm & Ranch Water Infrastructure Program (FRWIP)**

As of year end, we submitted 50 project applications for an approximate total of \$243,663.32 in projects, on 57 quarter sections of land.

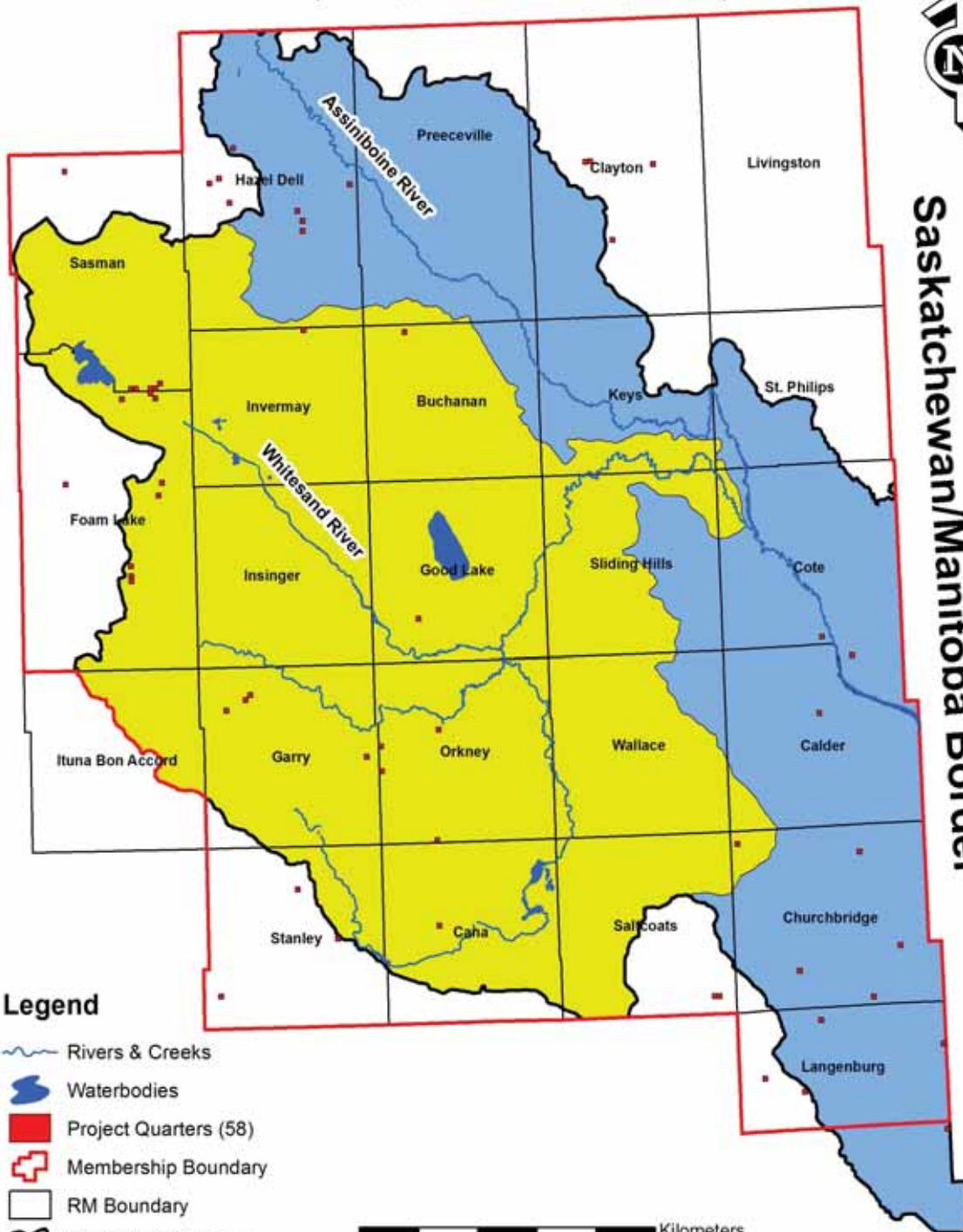


<b>Rural Municipality</b>	<b>Project Cost Totals</b>	<b>Project Applications</b>
Langenburg	\$18,459.40	5
Churchbridge	\$18,159.15	5
Saltcoats	\$5,650.00	2
Stanley	\$9,430.39	3
Calder	\$16,200.00	1
Orkney	\$35,056.50	3
Garry	\$9,862.50	4
Cote	\$8,667.50	2
Good Lake	\$1,295.00	1
Foam Lake	\$13,031.00	7
Buchanan	\$16,704.55	2
Clayton	\$38,272.97	4
Hazel Dell	\$40,094.36	8
Sasman	\$12,780.00	3
<b>Totals</b>	<b>\$243,663.32</b>	<b>50</b>

# AWSA Total Farm and Ranch Water Infrastructure Program Project Locations (Nov.1, 2013 - Oct. 31, 2014)

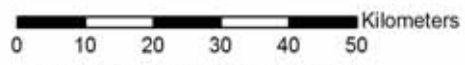


**Saskatchewan/Manitoba Border**



**Legend**

- Rivers & Creeks
- Waterbodies
- Project Quarters (58)
- Membership Boundary
- RM Boundary
- Watershed Boundary
- Assiniboine River Sub-basin
- Whitesand River Sub-basin



Created By: Jesse Nielsen (AWSA)  
Projection: UTM Zone 13N  
Datum: NAD 1983



## Decommissioning Abandoned Wells

Abandoned wells are wells that are no longer in use. Over the years, many wells and test holes around homes and farms throughout our watershed have been abandoned without being properly sealed and decommissioned. These wells pose a serious threat to groundwater quality and can be a safety hazard to humans and livestock. These abandoned wells act as a direct conduit that can allow surface water to directly enter an aquifer, contaminating the groundwater and potentially contaminating nearby wells. Through the Farm & Ranch Water Infrastructure (FRWIP) program, we applied to decommission **17 wells** this fiscal year.

The following pictures are some of the wells that were applied for this year.

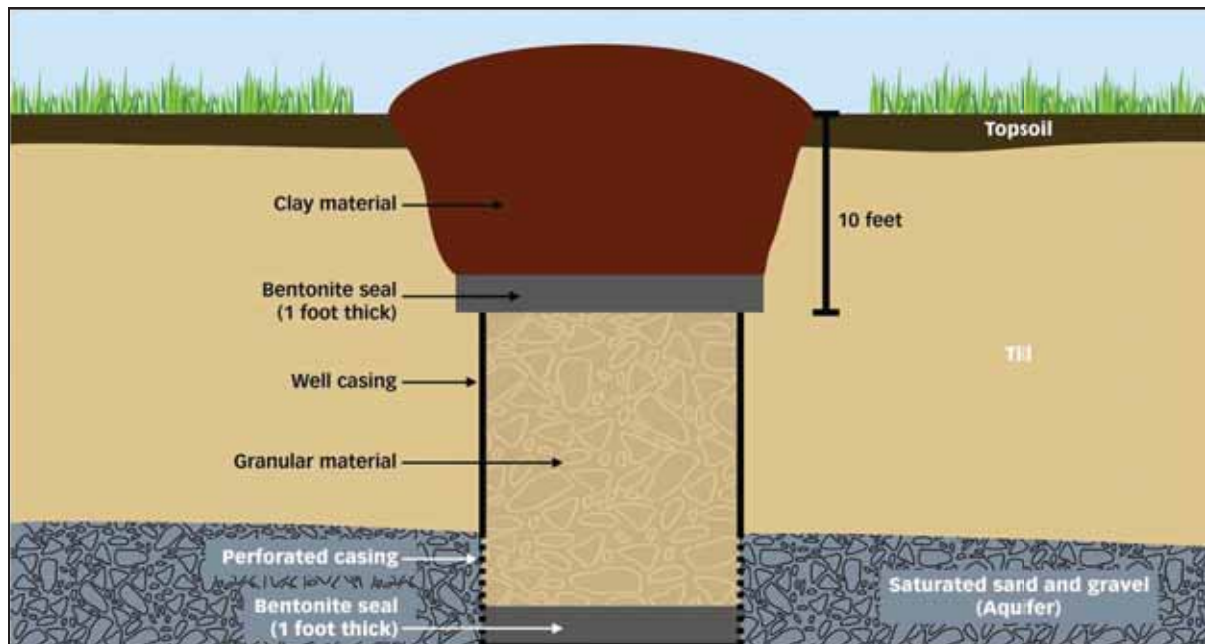
Village of Tuffnel - RM of Foam Lake



Bernard Guenther - RM of Orkney



Well Decommissioning process for a large diameter well



## **SWF - Fish Enhancement Projects**

The goal of these projects is to continue to improve fish habitat in the Assiniboine River Watershed. We partnered with the Saskatchewan Wildlife Federation (SWF) to offer producers an additional 25% funding for the following BMPs.

BMP – Relocation of Livestock Facilities - Any permanent structured livestock facility that is located less than 1000 ft from a fish bearing waterway.

BMP – Fencing to Protect the Environment - Any new livestock fencing projects that eliminates livestock access to a fish bearing waterway.

BMP – Remote Water Systems - Any new remote water system set up, that eliminates livestock access to a fish bearing waterway.

BMP – Planting Vegetation to Protect Riparian Areas - Any newly seeded acres along or around fish bearing waterways.

BMP – Improved Stream and Creek Crossings - Any existing crossings that are improved for fish passage.



BMP - Remote Water System - Sliding Hills Charolais - RM of Sliding Hills (273)



## Wetland Restoration Program

The AWSA partnered with Lake Winnipeg Basin Stewardship Fund - Environment Canada and DUC to promote the importance of wetlands and to restore/re-establish drained or in-filled wetlands. We restored a total of 100.4 wetland acres (39 individual basins) on 9 quarters of land in November of 2013 and October of 2014 (2014 fiscal year). The program compensated landowners \$2000 for every wetland acre they re-established on their land. In return for the incentive payment, landowners were required to sign a 10 year agreement stating they will not breach any of the restored wetlands, nor do any new drainage or bush clearing to the existing wetland and upland habitat within the quarter of land in which the restoration was done (we protected 81.7 acres of existing habitat). Over time these restored wetlands will once again become full-functioning wetland ecosystems.

- Wetlands are commonly referred to as marshes, sloughs or potholes.
- Wetlands reduce the severity of floods by retaining water and releasing it slowly during drier periods.
- Wetlands recharge groundwater supplies by capturing and storing surface water, a portion of which infiltrates into the underlying water table.
- Wetlands help purify surface water by breaking down, capturing, or assimilating nutrients, agricultural herbicides and pesticides, organic waste, and sediment that is carried to them by runoff water.
- Around 80 acres of wetlands are destroyed in Canada every day - that's equal to approximately 40 CFL football fields! The vast majority of this loss is occurring on the Prairies.
- Wetlands act as Phosphorus sinks, helping to reduce the eutrophication of our lakes and waterways. They assimilate approximately 2 g P/m<sup>2</sup>/year (or 8.1 kg P/acre/year). That means **the wetlands we restored this fiscal year have the ability to assimilate over 800 kg of Phosphorus annually!**



Drainage Ditch BEFORE Restoration

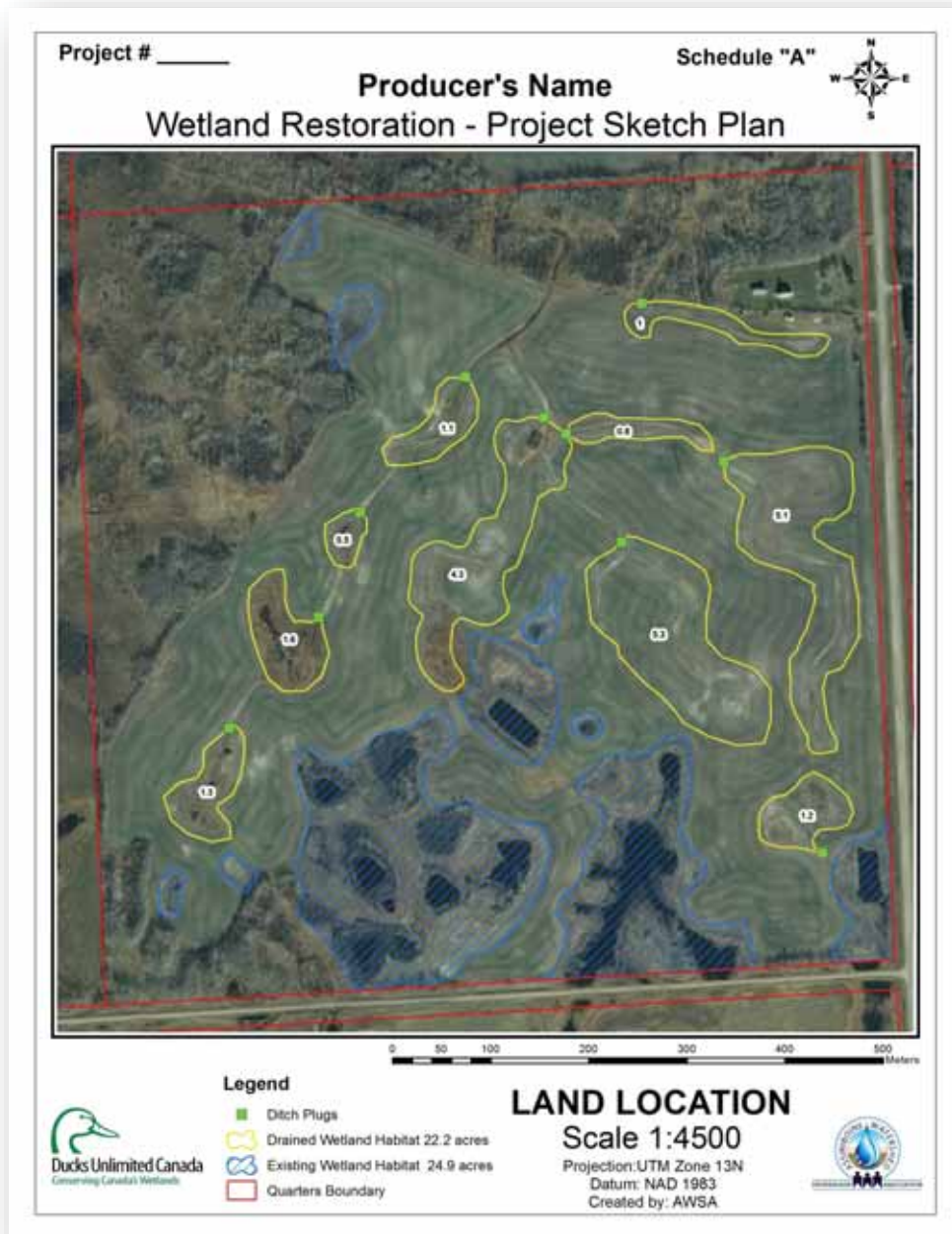


Drainage Ditch AFTER Restoration



# Wetland Restoration Program

This sketch plan is an example of the process we use for landowner negotiations and wetland restoration. Each land parcel is initially mapped using GIS (Geographic Information System) software in conjunction with the satellite imagery. In-field "ground-truthing" is then performed using a GPS and laser-level system to accurately map out ditch plug locations and restored basin boundaries. The final sketch plan such as that below, is then presented to the landowner for review prior to contract signing. This particular parcel had 10 separate basins to restore, for a total of 22.2 acres of wetland habitat. You can see many of the drainage ditches on the satellite imagery.



## Wetland Restoration Program

The following pictures are from wetlands we restored in 2009. After 5 years, they are full functioning wetlands that are protecting source water within the Assiniboine River Watershed.





# Culvert Infrastructure Mapping Program



## Culvert Infrastructure Mapping Available

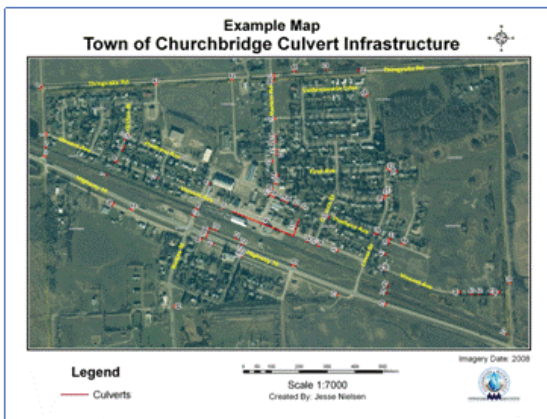


The Assiniboine Watershed Stewardship Association is pleased to offer its services to our Rural and Urban member municipalities interested in having their culvert infrastructure GPS mapped and inventoried. AWSA staff will measure and record dimensions, GPS locations, and any other relevant information on a municipality's infrastructure; and compile it in both electronic spreadsheet and GIS formats.

### Cost to Membership Municipalities

\$500/day flat rate (field and/or in-office map creation)

- ⇒ Rural Municipalities will receive 2 FREE days (based on their \$1,500 membership fee)
- ⇒ Urban Municipalities will receive 2 FREE days (based on their membership fee)



For more information contact Jesse at the Assiniboine Watershed Stewardship Association  
306-783-1692

# Culvert Infrastructure Mapping Program - Town of Kamsack

Last year the Town of Kamsack utilized the AWSA's culvert mapping service when AWSA coordinator, Jesse Nielsen, worked with Town of Kamsack public works staff to map out and assess all culverts within town limits on June 10th, 2014. Jesse prepared a report for the Town, which included an assessment of culvert condition, diameter, material type, and any other notable information. For more information on how your municipality can access this service, contact Jesse @ 306-783-1692.

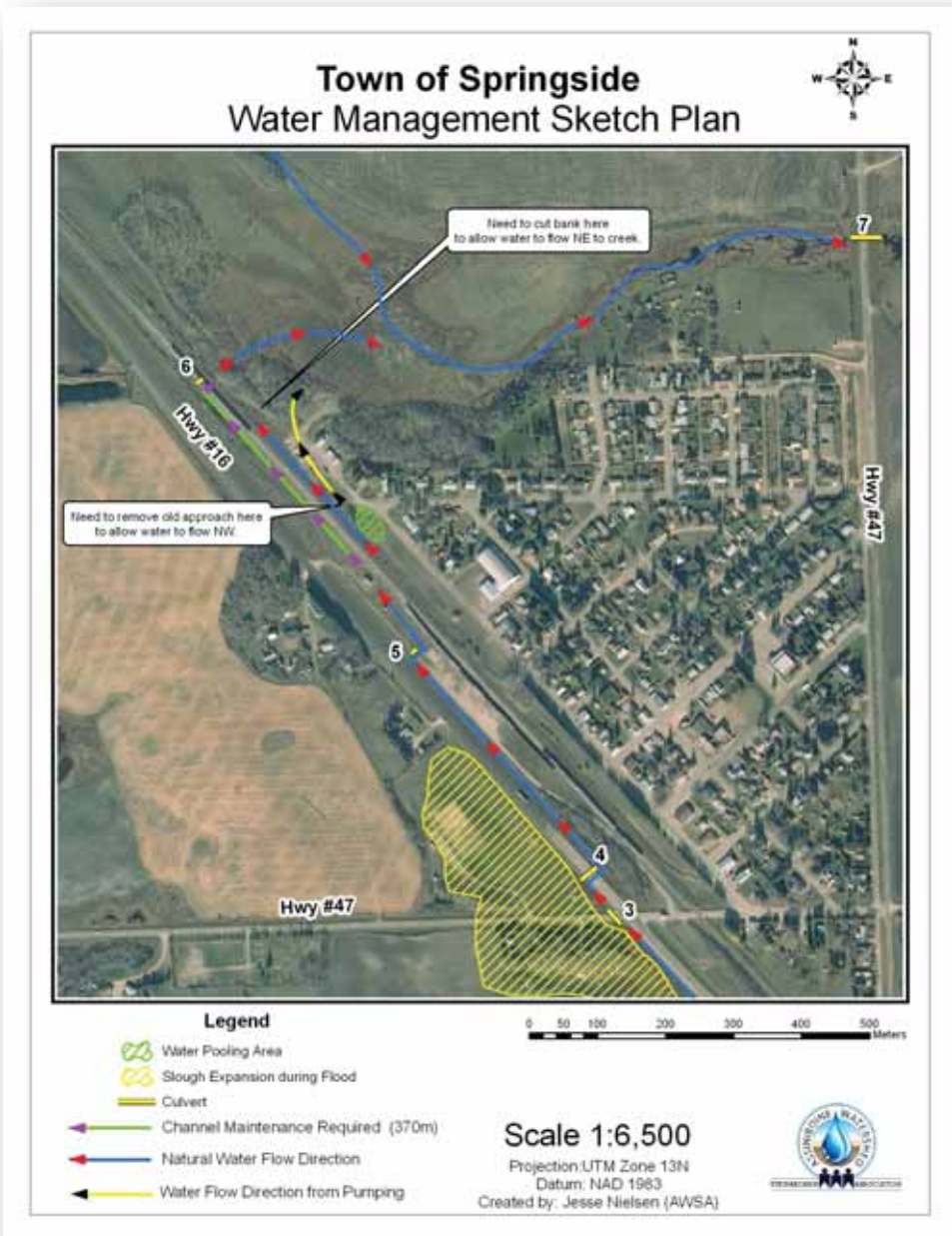




# Mapping Program - Town of Springside

The town of Springside approached the AWSA in September of 2014 to assist them in determining the cause of flooding concerns that persisted well after those caused by the June 30th record rainfall that triggered severe flooding across much of Saskatchewan. As a paying urban member, the AWSA happily agreed to assist the town with their request. Following an inspection of the sites of interest, the AWSA arranged for a WSA staff member to perform a survey of the area to determine elevations needed in order to better analyze the problem. The AWSA then arranged for an on-site meeting with CP Rail staff after it was determined that blockages along the rail bed drainage ditch were preventing water from running away from the town as it was designed to do. The railway agreed to the plans put forth to fix the problem areas, with work scheduled to take place by the town in 2015.

If you are an urban municipality member that has water management concerns that you think the AWSA may be able to provide some assistance with, please do not hesitate to contact us! We will gladly provide our services.



## Logan Green Water Management System



# WELCOME TO LOGAN GREEN



**LEGEND**

- TREES & SHRUBS
- WATER
- NEW WATERWELL
- PROPOSED PATHS
- EXISTING PATHS
- EXISTING UTILITIES
- EXISTING BUILDINGS
- EXISTING PAVEMENT
- EXISTING LANDSCAPE

The natural area you see before you showcases Yorkton's commitment to environmental responsibility. The cooperation of several environmentally-minded organizations with the City resulted in the creation of this unique eco-recreation area. The project demonstrates the splendor that results from merging environmentally sustainable development with the beauty of the natural parkland landscape.

**The Logan Green Water Management System was made possible through partnership with the following organizations:**

























Summer of 2014 marked the completion of the Logan Green Project for the AWSA. The project, which the AWSA has been involved in since its inception in 2010, has led to the creation of a beautiful eco-recreational area for all City of Yorkton residents to enjoy! Highlights of the AWSA's past involvement include the creation of a natural riffle-pool stream system and the planting of over 3000 shrubs and trees to add to the aesthetic and environmental qualities of the area. This past year saw the walking trail system completed along with the installation of a variety of informational/educational signage designed by the AWSA.

The highlight of 2014 for the Logan Green Water Management System came when the AWSA and the SK Wildlife Federation successfully released 750 rainbow trout into the fish pond located amongst the green-space at the southern edge of the city. The milestone was attended by Mayor Maloney and various media. The 6" trout came from Clear Springs Aquaculture out of Roblin, Manitoba. The release marked the culmination of several years of collaboration between the AWSA, the Water Security Agency, the City of Yorkton's Environmental Department, the SK Wildlife Federation's fisheries biologist, Adam Matichuk, and the Yorkton Wildlife Federation. The catch and release pond is open to anyone wishing to try their luck, and because it's a private pond, no fishing license is required. However, anglers must abide by the rules posted at the pond. The ultimate goal is to have the fish overwinter in the pond without the need for an aeration system, which would allow the fish to grow quite sizeable from year to year. It's expected that this will be able to happen due to the fact that the pond is supplied by a continuous flow of oxygen-saturated water from the water treatment plant year-round.

**For full background information on the Logan Green project check out our website:**  
[www.assiniboinewatershed.com/what-we-re-doing/yorkton-logan-green-project](http://www.assiniboinewatershed.com/what-we-re-doing/yorkton-logan-green-project)



# Logan Green Water Management System - Signage

**City of Yorkton**  
**WETLAND HABITAT**

**What is a wetland?**

- Wetlands are areas that hold water either temporarily or permanently. For example, Logan Green has several wetland areas including the stormwater pond, the stormwater channel, the fish pond, and stream.
- The wet conditions found in these areas cause wetland vegetation to grow (e.g. cattails) and is home to wildlife uniquely suited to live in these ecosystems (e.g. ducks).
- Wetlands are also called sloughs, potholes, marshes, swamps, ponds, or bogs.

**Why are wetlands important?**

- Wetlands are "super-ecosystems"; they sustain more life than any other terrestrial ecosystem on the planet!
- Wetlands such as the stormwater pond also help control flooding, filter and recharge local aquifers (Yorkton's drinking water comes from groundwater aquifers) and trap nutrients that can contaminate our lakes and rivers.
- Wetlands are being lost at an alarming rate in Canada. Approximately 32 acres (45 soccer fields) of wetlands are drained and/or filled each day as a result of urbanization, agriculture, and industrial expansion. The number is highest in Saskatchewan, where every day, approximately 28 acres of wetland habitat is destroyed!



To learn more about wetlands and the important role they play, visit [www.ducks.ca](http://www.ducks.ca)

The Logan Green Water Management System can make possible through partnering with the following organizations:



**City of Yorkton**  
**UPLAND HABITAT**

**What are uplands?**

- Uplands are areas of the landscape that generally have dry soil and ground conditions (i.e. as opposed to wetlands).
- Uplands in the Parkland region of Saskatchewan can be either grasslands or covered in shrubs and trees.

**Why are uplands important?**

- Uplands are home to a wide variety of wildlife including many species of birds, reptiles, rodents, deer, and pronghorns.
- Upland bush habitat provides valuable protection from the elements for a variety of wildlife, especially during the winter months.
- Upland habitat traps drifting snow in the winter, which serves to fill wetland habitat (sloughs, marshes, etc.) every spring.
- Upland habitat is very valuable from an economic standpoint; it sustains two of Canada's largest industries: forestry and agriculture.
- The trees found in uplands around the world are responsible for generating the majority of the Earth's oxygen.



**Setting it Home: The Thornhill River (White Platte)**

- Thornhill opens in the first summer after it is planted.
- It can be used as a windbreak and shade and can be used for erosion control.
- It is a shrub tree with a long lifespan and can live up to 100 years.
- It grows best in full sun, moist soils, in gravelly soils.
- It is a deciduous shrub.

The Logan Green Water Management System can make possible through partnering with the following organizations:



**City of Yorkton**  
**RECREATING A NATURAL TROUT STREAM**

The wetland you see before you is meant to mimic a natural stream channel. The channel contains a series of riffles and pools - characteristics of natural streams.

**Riffles** are shallow areas of cobble and rock that form in coarse-bottomed streams. Riffles create important fish habitat as trout seek out these areas to spawn and lay their eggs. The riffles oxygenate the water through the turbulence they create. They also provide shelter for small aquatic organisms and cover from predators. Riffles act as mini dams, creating small upstream pools.

**Pools** provide two things in a stream: depth for predator protection and weak current for still-water resting areas.



Cross-section of a riffle & pool stream

The Logan Green Water Management System can make possible through partnering with the following organizations:



**City of Yorkton**  
**Eco-Buffer**

The trees you see before you are a demonstration project that was made possible through partnership between the City of Yorkton and the former Agriculture and Agri-Food Canada Agroforestry Development Center.

**Ecological Buffers (Eco-Buffers)** are a relatively new approach to tree planting that models natural bluffs and provides the following environmental services:

- Rapid establishment and increased disease resistance
- Enhanced biodiversity and pollination services
- Superior nesting habitat and food sources for birds
- Carbon sequestration

**Eco-Buffer Design**

Over 2000 trees and shrubs were planted in four separate Eco-Buffers around Logan Green. They consist of the following 17 species:

- Red-Shouldered Blackbird
- Downy Woodpecker
- Red-Backed Sapsucker
- White-Bellied Nuthatch
- White-Bellied Nuthatch
- White-Bellied Nuthatch
- White-Bellied Nuthatch
- White-Bellied Nuthatch
- White-Bellied Nuthatch
- White-Bellied Nuthatch
- White-Bellied Nuthatch
- White-Bellied Nuthatch
- White-Bellied Nuthatch
- White-Bellied Nuthatch
- White-Bellied Nuthatch
- White-Bellied Nuthatch

The Logan Green Water Management System can make possible through partnering with the following organizations:



**City of Yorkton**  
**WHERE DOES OUR WATER COME FROM?**

**What is an aquifer?**


- The source of the City of Yorkton's drinking water is groundwater, found below the surface in permeable layers of earth called AQUIFERS.
- The City extracts water from the aquifers using a series of wells.

**From the source to the tap**

- Groundwater is pumped to the Water Treatment Plant here at Logan Green where it is treated to make it safe for consumption. It is then pumped throughout the city via a series of large underground water mains, which then branch off into smaller distribution pipes called water laterals that connect to your home or business, and ultimately, every tap in the city.

**Facts about our groundwater**

- Yorkton is the only city in Saskatchewan that relies entirely on groundwater as its source of drinking water.
- The aquifers around Yorkton are relatively shallow (close to the surface), making them quite susceptible to contamination from activities occurring on the surface.
- Old abandoned wells pose a huge groundwater health risk as they act as a direct conduit for contaminants to enter our aquifers.
- Decommissioning (sealing) these old wells eliminates the potential risk they pose to the quality of groundwater in the Yorkton aquifers area.



The Logan Green Water Management System can make possible through partnering with the following organizations:




**City of Yorkton**  
**SEDIMENTATION PONDS**

The City of Yorkton's Water Treatment Plant uses filters to trap unwanted particles and minerals from the raw source water (groundwater). When the filter's pores become clogged, they need to be cleaned. One of the best ways to clean a drinking water system's filter is to backwash it, meaning reversing the flow and increasing the velocity at which water passes back through the filter. This cleans the particles out of the filter.

The backwash water must then be treated prior to release into Yorkton Creek due to the minerals it contains. Rather than piping the backwash water to the City's Waste Water Treatment Plant, it is treated using a very simple process consisting of two gravity sedimentation ponds, a wetland stream and a pond. There is no chemical or mechanical treatment process involved- the backwash is simply treated through sedimentation by gravity.

The suspended particles in the backwash water naturally settle out when the flowing water enters the still water of the ponds. When the sedimentation builds up to a certain level, it is removed from the pond and placed into large scale compost piles.

The Logan Green Water Management System can make possible through partnering with the following organizations:



**City of Yorkton**  
**STORMWATER DETENTION POND**


This pond was created to address two issues identified in the Assiniboine Watershed Stewardship Association's City of Yorkton Stormwater Study (2009-2011): management of 1) stormwater **quantity** and 2) stormwater **quality**.

Stormwater is the rain or snowmelt water that drains off the streets and into the city's storm drain system. All stormwater drains into Yorkton Creek without receiving any sort of treatment.

Stormwater from the south end of Gladstone Avenue (area of the city located around the traffic circle) is routed to this pond through an underground pipe. The pond is considered a "dry-bottomed pond", meaning it is designed to only hold water during, and shortly after, storm events.

Holding water in the pond allows it to drain in a slower, controlled manner, in addition to allowing the water time to settle. The settling causes silt, debris and nutrients to accumulate on the bottom of the pond. The vegetation in the pond can use those nutrients for growth. The purified water flows from the ponds into the fish pond, via the open stormwater channel.

The Logan Green Water Management System can make possible through partnering with the following organizations:



# Logan Green Water Management System - Fish Release



## TROUT FISHING POND

### Rules and Regulations:

- Catch and release only
- Barbless hooks must be used
- Use of live fish for bait is strictly prohibited
- Introduction of foreign fish species is strictly prohibited
- Use of pond during daylight hours only
- Children must have adult supervision
- Anglers are not to enter water (shore fishing only)
- Ice fishing is strictly prohibited

**CAUTION: Deep water and steep banks.  
Fish at your own risk.**

**ATTENTION: Area is monitored by  
video surveillance.**

The Logan Green Water Management System was made possible through partnership with the following organizations:



Government of Saskatchewan

Fish and Wildlife Development Fund

Canon



(Pictures provided by the AWSA)



## **Good Spirit Lake Shoreline Revitalization Project**

The Good Spirit Shoreline project saw the AWSA partnering with the Water Security Agency, Good Spirit Lake Watershed Association Board, Good Spirit Provincial Park, Eco-Action - Environment Canada, and the Saskatchewan Wildlife Federation. The AWSA completed phase I (a 13 meter section of the east shoreline) around the outlet control structure. The bank was shaped and excavated, then fill was placed and packed. Geo-textile fabric was then laid and covered with pit run gravel. The final step was to place cobble / boulder sized rock on the bank. Phase II will take place in the fall of 2015 (a 100 meter section on the west shoreline) around the control structure.



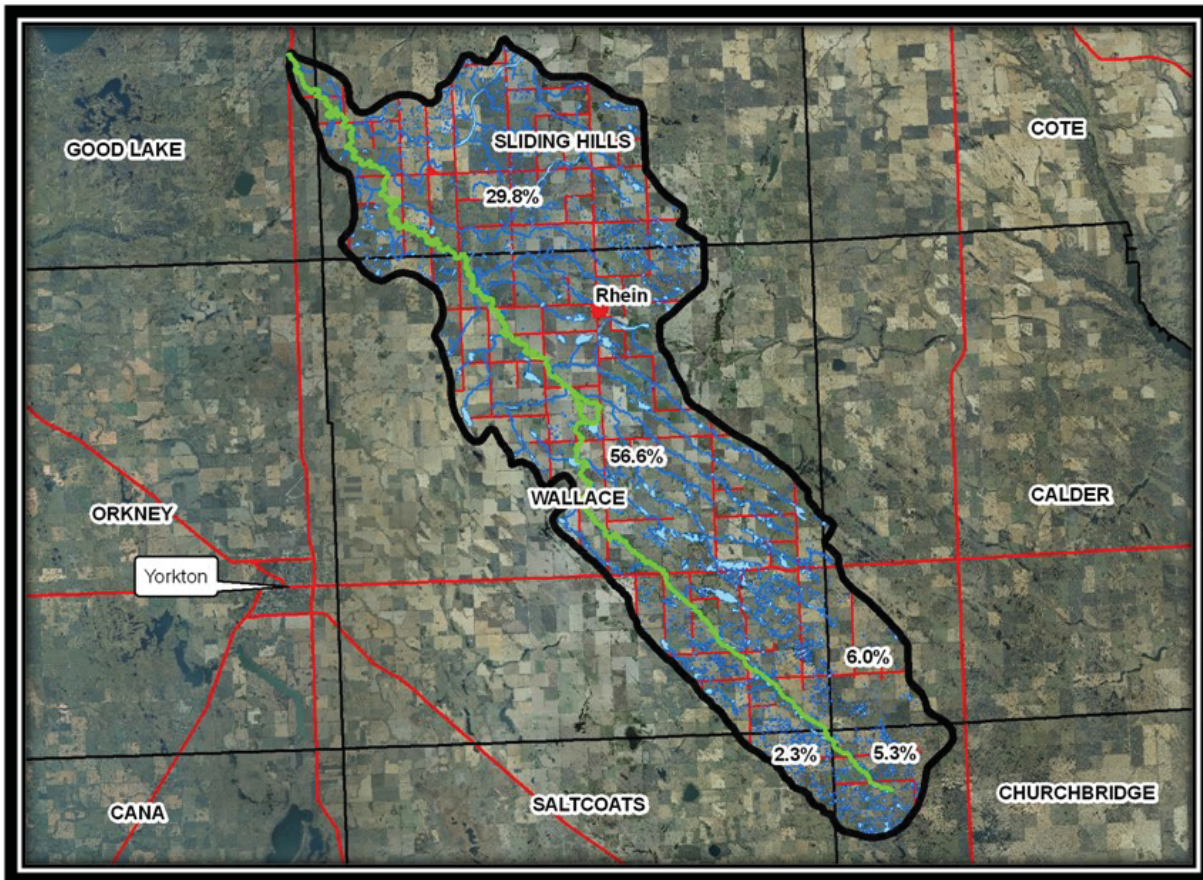
(Pictures provided by the AWSA)

## Wallace Creek Watershed Association Board No.11

The Wallace Creek Watershed Association Board No. 11 (WCWAB) was formed under the provincial *Watershed Act* and officially incorporated in September of 2013. The WCWAB is comprised of a 11 member Board of Directors appointed from the municipalities that make up the Wallace Creek Watershed membership area (see map below). The AWSA was appointed by the Board to act as the administrator/projects manager for the new Association. Unlike the AWSA and provincial watershed associations that were formed by the Water Security Agency under the *Source Water Protection Planning Process*, because the WCWAB is formed under the *Watershed Act*, they are considered a form of municipal government with the ability to levy funds from their membership. Thus, for most projects being undertaken by the WCWAB, each rural municipality pays for a portion of the total cost according to the percentage of area each RM has within the Wallace Creek drainage basin (see map below).

### About the Wallace Creek Watershed:

The Wallace Creek Watershed (WCW) is a sub-basin of the Assiniboine River Watershed located in East-Central Saskatchewan. WCW is approximately 692 km<sup>2</sup>, spanning just over 6 different Rural Municipalities: Good Lake (274, not a member), Sliding Hills (273), Wallace (243), Calder (241), Saltcoats (213), and Churchbridge (211). The only urban municipality located within the watershed is the village of Rhein. The main channel of Wallace Creek is an astonishing 188 miles long! That's approximately the same distance as driving from Yorkton to Regina! This inconceivable length is due to the unbelievable meandering nature of the creek, which is a factor of the incredibly small amount of elevation drop from the creek's headwaters to it's confluence with the Whitesand River.



Wallace Creek Watershed (Wallace Creek shown in green)



## Wallace Creek Watershed Association Board No.11

The **Vision** is to see Wallace Creek Watershed as a well-planned, productive, and economically and environmentally sustainable water management system.

The **Mission** is to proactively manage water resources within the Wallace Creek watershed in order to protect residences, municipal infrastructure, and agricultural and private property from flood-related damage, while balancing the agricultural and environmental interests of all stakeholders.

The **Objectives** of the WCWAB are:

- ⇒ To balance the agricultural, environmental, economical, and social interests of the watershed.
- ⇒ Coordination of efforts in relation to works and activities associated with flood management and emergency response.
- ⇒ Management of water related resources to prevent and reduce flooding impacts within the Wallace Creek watershed.
- ⇒ Protection of residences, municipal infrastructure, agricultural land, private property, and water wells from the negative impacts associated with flooding.
- ⇒ Mitigation of the effects of agricultural drainage contributing to increased flows and subsequent flooding within the Wallace Creek watershed.
- ⇒ Maintaining water conveyance capacity throughout the watershed by ensuring that an organized system of culverts and bridges of consistent and adequate design standards is maintained through roadways.



Road Closed North of Elchuk's (April 30/14)



"Sleepy's Bridge" Erosion Problem (April 30/14)



Channel Clearing - "Sleepy's Bridge" (Oct.17/14)



Channel Clearing - N of Purves Lake (Oct.17/14)

# **Assiniboine River Basin Initiative (ARBI)**

## **What is the Assiniboine River Basin Initiative?**

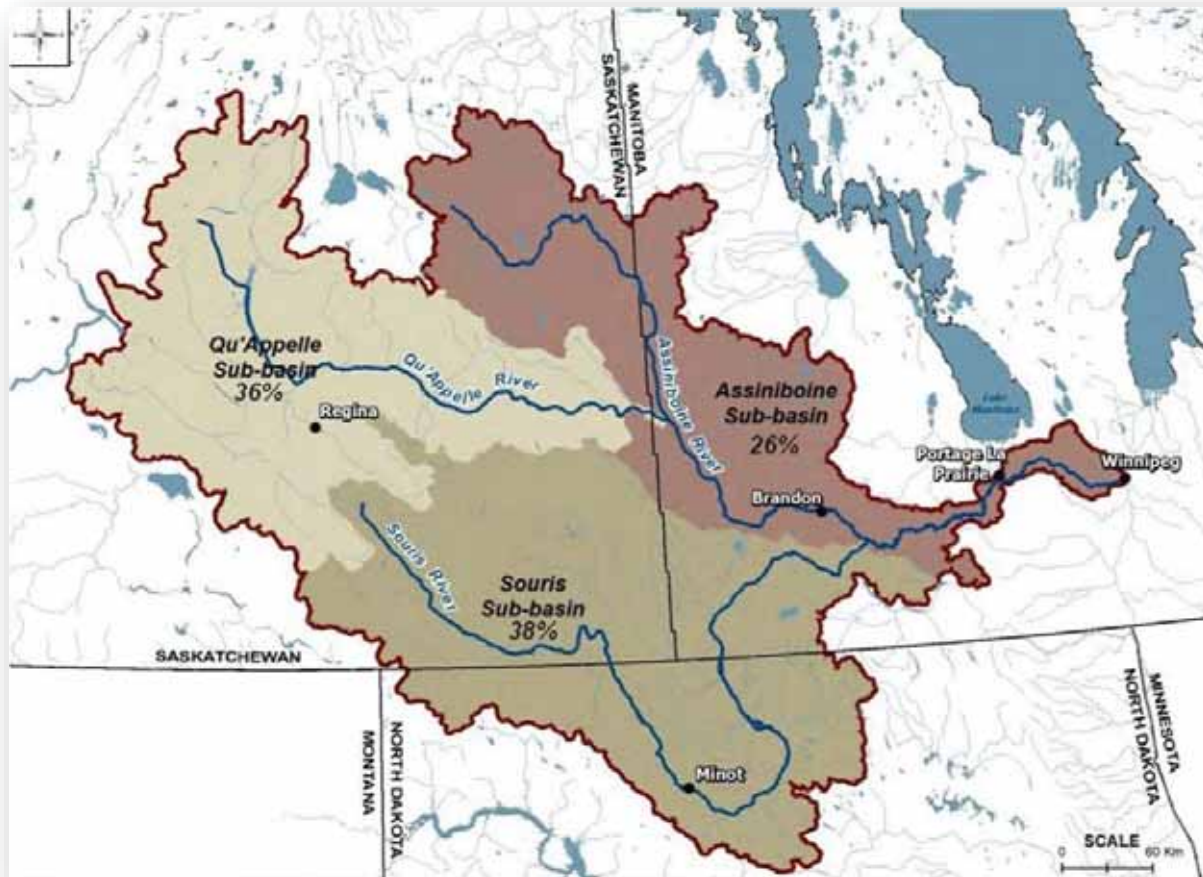
ARBI is a group of key stakeholders from North Dakota, Saskatchewan and Manitoba which, under the guidance of the Prairie Improvement Network (PIN) has come together to develop an organizational structure that will work cooperatively to address water related issues across the basin.

## **Why have the Stakeholders come Together?**

In 2008, the Government of MB commissioned a study on the basin. A meeting was hosted with invitees from the above-mentioned stakeholders. A final report with recommendations was developed by the Red River Basin Commission (RRBC) as well as a Steering Committee. Due to a variety of reasons the initiative did not move forward.

In 2011 the basin experienced one of its worst flood events in history. In the aftermath, it was evident that, unlike the Red River basin, there was no inter-jurisdictional structure in place to help stakeholders and watershed residents to take a basin-wide approach to the major water issues that had become evident.

As a general consensus emerged among stakeholders of the need for an overarching plan for the basin, PIN proceeded with the assistance of the RRBC to create the ARBI Planning Committee in the fall of 2013.



The overall Assiniboine Drainage Basin area is composed of the Assiniboine, Qu'Appelle and Souris River watersheds. The Assiniboine River joins the Red River at The Forks in Winnipeg.



## **Assiniboine River Basin Initiative (ARBI)**

### **Who are the Members of the ARBI Planning Committee?**

The committee includes members from all three jurisdictions representing municipalities and counties, conservation, water, agricultural and science-based organizations as well as government departments.

An Interim Executive Committee is in place and chaired by Dr. Allan Preston of PIN, with Dan Mazier of the Keystone Agricultural Producers as vice-chair. Other members include Patrick Fridgen of the North Dakota State Water Commission, Aron Hershmillier of the Saskatchewan Assiniboine Watershed Stewardship Association, and Heather Dalgleish of Manitoba Conservation Districts Association.

Lance Yohe, former Executive Director of the RRBC, is the Senior Advisor and Wand McFadyen is the ARBI Project Manager/Champion.

### **Work to Date?**

Following the formation of the ARBI Planning Committee a multi-stakeholder workshop was held in Virden, MB on March 26th, 2014 with over 130 representatives in attendance from all three jurisdictions. The consensus form this meeting was to develop an agency that would unify the basin.

### **Next Steps?**

As part of the consensus-building process, meetings are currently planned with several government departments and elected officials, as well as other agencies and stakeholders across the basin.

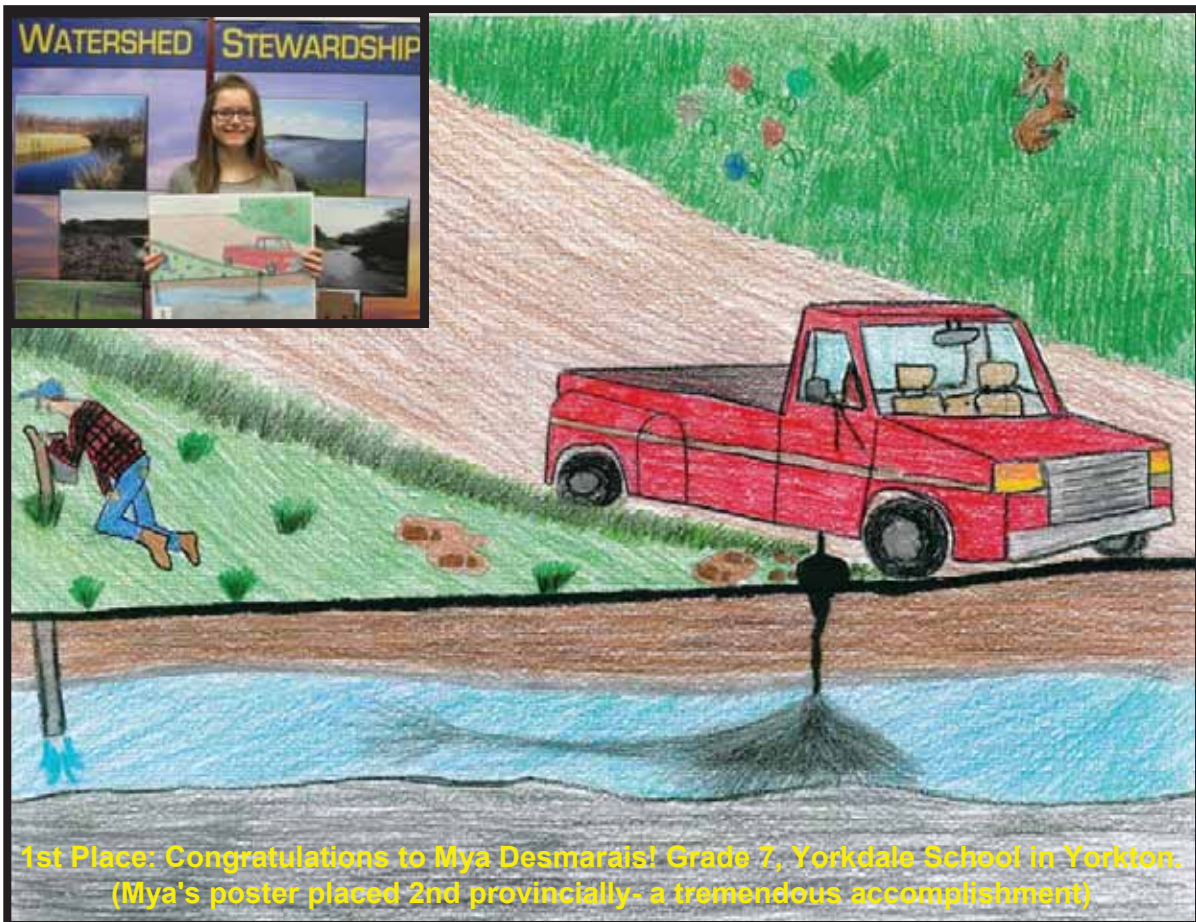
A fall conference will be held in Regina on November 12th - 14th, 2014. A governance model will be presented to those in attendance as well as membership structure which will drive the new organization forward.



An ARBI Informational Meeting was held in Yorkton on September 23rd, 2014

## Poster Contest

The Assiniboine Watershed Stewardship Association once again had great success with its annual poster contest. This year we focused on educating students on the importance of groundwater for our drinking water in the Assiniboine River Watershed (over 90% of watershed residents rely on groundwater for their drinking water source), with the theme being, "Groundwater-Below the Surface". The contest was open to grade 5, 6, and 7 students. They had an opportunity to win several prize packs locally, with the first place poster having a 1 in 10 opportunity to also win the provincial Grand Prize of a \$1000 Outdoor Sporting Gear Package donated by the 10 participating provincial Watershed Associations, custom chosen by the student themselves! Jesse and Katelyn gave a total of 11 presentations at 7 schools across the watershed (the most ever done), with the highlight of the presentations being the edible candy aquifer model enjoyed by all students. We once again received the most posters of any watershed in the province, a total of 98! We would like to thank all those teachers and students that participated.



**1st Place: Congratulations to Mya Desmarais! Grade 7, Yorkdale School in Yorkton.  
(Mya's poster placed 2nd provincially- a tremendous accomplishment)**

Please use the space below to explain what you drew in your poster:

In my poster I drew an old truck on a dirt road where the driver of that truck is getting water from a well. Yet his truck is leading dangerous chemicals into the aquifer that is supplying water to the well that the man is getting his water from.



# Poster Contest



2nd Place: Congratulations to Kareena Lukinov, grade 7 from Yorkdale school in Yorkton.



3rd Place: Congratulations to Sadie McGriskin, grade 6 from Kamsack Comprehensive Institute.



The candy model aquifers were a great way to explain to students the concept of an aquifer and how a water well works... and they tasted great too!

## Pizza Farm



The AWSA once again assisted with the Ministry of Agriculture's "Pizza Farm" this past year. The Pizza Farm is a large circular plot of land partitioned into smaller plots shaped like pizza wedges. Each of the farm's wedges produce ingredients that are used in making pizza. This included wheat for crust, canola for oil, tomatoes, peppers, garlic and herbs for sauce, a pig for pepperoni and ham, and a dairy cow for cheese. The Pizza Farm is designed to increase agricultural awareness within the community and among youth. It is a fantastic interpretive and educational tool for teaching school children about where their food comes from and the important role that modern agriculture and technology play in food production. All of the educational activities and tours have been connected to key outcomes and indicators from the Saskatchewan Curriculum for grades 3 and 4.

For a great video of the Pizza Farm check out the following link:

<https://www.youtube.com/watch?v=Hzlp529pWR0>





## Emergency Flood Damage Reduction Program

The AWSA contracted their services to the Water Security Agency during the 2014 summer flooding event which heavily affected the Assiniboine River Watershed. AWSA staff assisted with administration duties, data input, initial site inspections/reporting, and final site inspections/reporting. The Emergency Flood Damage Reduction Program (EFDRP) provides assistance with the implementation of emergency flood damage reduction or prevention measures in 2014 for communities, rural municipalities, businesses, non-profit organizations, individual farm and country residences and cottages to prevent damage from imminent flooding.

Activities and works covered by the program provisions:

- Engineering support
- Construction of dykes/berms
- Installation of culverts
- Construction of diversion works (Approvals required)
- Sandbags, material to fill sandbags, equipment rental to fill sandbags, and placement of sandbags with machinery
- Temporary flood dykes (water tubes, basket type dykes, etc.)
- Channel clearing
- Pumping
- For communities and municipalities, use of their own equipment for flood prevention work at standard industry rates
- For yard sites – owners can use their own equipment and cost-sharing will be based on appropriate equipment rental rates



Submerged culverts and berm on grid to hold Yorkton Creek within its banks and protect downstream property

(Pictures provided by the AWSA)

## **Fine Lifestyles Magazine Article**

In a constant effort to promote ourselves and our work, the AWSA expanded its advertising efforts in 2014 with a full 2 page article in the popular *Fine Lifestyles* magazine. The magazine tells the stories of successful businesses in the Parkland area of eastern Saskatchewan and Western Manitoba.



### *Stewards of* **WATER AND THE ENVIRONMENT**

**T**he Assiniboine Watershed Stewardship Association (AWSA) is an independent, non-profit organization based out of Yorkton.

They work with all levels of government, as well as conservation organizations, citizens and communities of the Assiniboine River Watershed to protect the source waters of the Assiniboine River, its tributaries and aquifers within the watershed.

The AWSA is governed by a 12-member board of directors, comprised of rural and urban representatives. The membership base includes 24 rural municipalities, two cities, eight towns and three villages. Since inception in 2007, the AWSA has grown from 24 to 37 members, and has completed over 11.5 million dollars worth of projects.

Activities of the AWSA are aimed at completing the key actions contained in their two Source Water Protection Plans (SWPPs) – The Assiniboine River SWPP and the Yorkton Area Aquifers SWPP. The AWSA is unique amongst the 10 provincial watershed groups in Saskatchewan in that they are the only organization implementing an aquifer plan. This is testament to the importance of groundwater in the ARW. Over 90 per cent of watershed residents rely on groundwater for their drinking water, with Yorkton being the only city in Saskatchewan that relies solely on groundwater to supply its residents with drinking water.

In March of this year, the association was awarded with the prestigious 2014

Council of the Federation, Excellence in Water Stewardship Award, Saskatchewan. The award was created by Canada's premiers at the Council of the Federation in recognition that water is critical to human and ecosystem health. This award is presented in each province and territory in Canada. The award acknowledges the tremendous work the AWSA has done to assist agricultural producers in "greening up" various aspects of their operations.



**TOP L-R** Jesse Nielsen, coordinator, Katelyn Smith, technician, Aron Hershmillier, manager  
**ABOVE L-R** Don Olson, board chair, Aron Hershmillier, manager, Jesse Nielsen, coordinator

# Fine Lifestyles Magazine Article



## TERMS TO KNOW

**WATERSHED:** An area of land where the topography causes all water to drain into a single outlet. Our watershed is called the Assiniboine River Watershed because all the water in the area eventually flows into the Assiniboine River before leaving the watershed.

**AQUIFER:** A permeable body of rock found beneath the surface, capable of yielding usable quantities of groundwater for wells and springs.

**SOURCE WATER:** Untreated water from streams, rivers, lakes or aquifers that is used to provide drinking water for human consumption.



RIGHT Good Spirit Lake Fish Habitat Mitigation Project

The AWSA works on a variety of projects such as water quality projects, fish habitat enhancement projects, well decommissioning, wetland restoration, and various ag-related programs.

### PROJECTS — PAST & PRESENT

- Farm Stewardship Program
- Farm & Ranch Water Infrastructure Program
- Wetland Restoration Programs
- Good Spirit Lake Fish Habitat Mitigation Project
- Yorkton Logan Green Water Management System
- Watershed Poster Contest
- Agricultural Demonstration Projects
- Land & Infrastructure Resiliency

### Assessment Project

- Yorkton Stormwater Study
- Fish Barrier Mitigation Projects
- Culvert Infrastructure Mapping
- Tree Planting Projects
- Aquifer/Watershed Awareness Signage
- Wetland Awareness Signage
- Abandoned Well Decommissioning

The AWSA provides local solutions to local problems, while also providing a place people can call for help with their own water-related issues. Through the actions of the association, they strive to ensure that every person in the Assiniboine River Watershed has a safe, reliable supply of drinking water, now and into the future. »





## **Outdoor Edge Magazine Article**

The following article appeared in the *Outdoor Edge* magazine in the fall of 2014. The magazine is provided free of charge to all members of Provincial Wildlife Federations across Western Canada. For more information on the project check out our 2013 Annual Report.

# Working Together to Find a

By Adam Matichuk, SWF Fisheries Project Coordinator



Pumping out the scour hole.  
Photo courtesy of AWSA

Last fall, the Saskatchewan Wildlife Federation (SWF) worked with a number of partners at Good Spirit Lake to alleviate a problem that has persisted for a few years – fish stranding. During the past few years, high flows caused a large scour hole to develop in the outlet channel downstream of the lake. The outlet channel drains water from Good Spirit Lake, located approximately 35 km northwest of Yorkton, to the Whitesand River. Often when water is released from the lake, fish move up the outlet channel from the Whitesand River. When releases are stopped, the fish would remain in the scour hole because there was plenty of water for them. However, as the water began to dry up or froze over, the fish would perish because they ran out of oxygen.

As a temporary solution, fish salvages were conducted for several years after the flows were shut down. Using seine nets, volunteers would capture fish below the control structure, carry them over the dam in buckets of water and release the fish into Good Spirit Lake. As many as 5,000 fish were salvaged each time! This was a very labour intensive activity that became increasingly difficult to accomplish as the scour hole got bigger and bigger due to



Channel work nearing completion.  
Photo courtesy of AWSA

# Long Term Solution for Fish

erosion. A more permanent solution was required.

In 2013, a group of stakeholders including the Assiniboine Watershed Stewardship Association (AWSA), Good Spirit Lake Watershed Association Board, Good Spirit Lake Provincial Park, Water Security Agency, Friends of Good Spirit Lake Association, Yorkton Wildlife Federation, and the Saskatchewan Wildlife Federation, combined their efforts to fix the scour hole and prevent fish from stranding there after water releases were stopped. The 5 m deep scour hole, measuring approximately 70 m by 20 m in size, was pumped out and all the fish were captured and released into the lake. Clay was hauled in to fill the hole which was covered by geotextile fabric and rock to prevent it from eroding again. Now when water flows are ramped down, fish will get the cue and move downstream with the water back to the Whitesand River.

This project was a major undertaking and could not have been completed without the cooperation of all the partners and a funding grant provided by Environment Canada's EcoAction Community Funding Program. On behalf of the SWE, I would like to extend my sincere thanks to AWSA for taking the lead on this project. For more information about the project, visit <http://www.assiniboinewatershed.com/what-we-re-doing/good-spirit-lake-scour-hole>.



Placing geotextile fabric and riprap to protect the area from eroding in the future.  
Photo courtesy of AWSA



Fish captured in the seine net and released into Good Spirit Lake.  
Photo courtesy of AWSA



Seining fish downstream of the control structure at Good Spirit Lake.



# Assiniboine River Watershed - Scenery Pictures

(All pictures are from the City of Yorkton - in the Yorkton Area)





## Wallace Creek Flight Pictures

AWSA manager and board member, Michael Buchholzer took a flight on July 10, 2014 of the Wallace Creek and Yorkton Creek sub-basins.

Wallace Creek and Whitesand River on Hwy #9



Wallace Creek and Whitesand River on Hwy #9



Whitesand River - new bridge on Good Spirit Hwy #229



Wallace Creek Rhein Hwy #309



Wallace Creek - Purves Lake



Wallace Creek and Hwy #10



(Pictures provided by the AWSA)

## Yorkton Creek Flight Pictures

AWSA manager and board member, Michael Buchholzer took a flight on July 10, 2014 of the Wallace Creek and Yorkton Creek sub-basins.

Yorkton Creek south of Yorkton Hwy #16



Leech Lake Outlet on Hwy #9



Crescent Lake / Little Bone Reserve Hwy #9



Crescent Creek Brewer Road



Crescent Creek RM of Cana - Washed out Culvert



Crescent Creek City of Melville



(Pictures provided by the AWSA)

## Yorkton Creek Flight Pictures

AWSA manager and board member, Michael Buchholzer took a flight on July 10, 2014 of the Wallace Creek and Yorkton Creek sub-basins.

Melville Reservoir



Hwy #52 west of Yorkton



Yorkton Creek - Hwy #9



Yorkton Creek - Hwy #9



Yorkton Creek through Yorkton



Yorkton Creek - Hwy #10



(Pictures provided by the AWSA)



## Melville Flood Pictures



Melville Hospital

(Picture provided via Facebook)



Melville Chevrolet Dealership

(Picture provided by CTV News)

# Melville Flood Pictures



Agri-park Road from the air

(Picture provided by Global News)

Agri-park Road on the ground

(Picture provided via Facebook)



Melville volunteers sandbag the city



Hwy #10



Pictures provided by Melville Advance



# Tree Planting Equipment Program



## Tree Planting Equipment Rental



The Assiniboine Watershed Stewardship Association is pleased to announce that it will now be renting tree planting equipment to all residents within its Rural and Urban member municipalities. We have one tree planter and three plastic mulch applicators available for rental on a first-come-first-served basis.



### Rental Costs

- ⇒ Equipment rental
  - ⇒ \$50/day or \$200/week (5 days)
- ⇒ Plastic Mulch
  - ⇒ \$100/roll (48"x1500') or \$50/half



### Equipment Information

- ⇒ Tree Planter
  - ⇒ "Non-hydraulic" model (coultter disc requires well-tilled soil to create furrow)
  - ⇒ Seats 2 people for planting
  - ⇒ Clevis-pin hitch
  - ⇒ Can be pulled behind tractor or 4-wheel drive truck
- ⇒ Mulch Applicator
  - ⇒ Pull-type
  - ⇒ Requires 50hp+ tractor with hydraulic hook-up capability
  - ⇒ Clevis-pin hitch



For more information  
contact the  
Assiniboine Watershed  
Stewardship Association  
306-783-1696





# SWF - Fish Enhancement Program



## Fish Enhancement Projects-Funding



The goal of these projects is to continue to improve fish habitat in the Assiniboine River Watershed. We partnered with the Saskatchewan Wildlife Federation (SWF) to offer producers an additional 25% funding for the following BMPs. **Individual project maximums apply.**

### Projects Available for Funding

BMP – Relocation of Livestock Facilities - Any permanent structured livestock facility that is located less than 1000 ft from a fish bearing waterway.

BMP – Fencing to Protect the Environment - Any new livestock fencing projects that eliminates livestock access to a fish bearing waterway.

BMP – Remote Water Systems - Any new remote water system set up, that eliminates livestock access to a fish bearing waterway.

BMP – Planting Vegetation to protect Riparian Areas - Any newly seeded acres along or around fish bearing waterways.

BMP – Improved Stream and Creek Crossings - Any existing crossings that are improved for fish passage.



For more information contact Katelyn at the Assiniboine Watershed Stewardship Association  
306-783-1693

## **Acronym List**

**AAFC** – Agriculture and Agri-Food Canada  
**ADOPT** – Agricultural Demonstration of Practices and Technology  
**AEGP** – Agri-Environmental Group Plans  
**AESB** – Agri-Environment Services Branch (Formerly PFRA)  
**AGM** – Annual General Meeting  
**AIS** – Alien Invasive Species  
**ALUS** – Alternative Land Use Services  
**ARBI** – Assiniboine River Basin Initiative  
**ARW** – Assiniboine River Watershed  
**ASAP** – ALUS Saskatchewan Assiniboine Project  
**AWSA** – Assiniboine Watershed Stewardship Association  
**BMP** – Beneficial Management Practice  
**COY** – City of Yorkton  
**CPR** – Canadian Pacific Railway  
**CNR** – Canadian National Railway  
**CSFSP** – Canada / Saskatchewan Farm Stewardship Program  
**DFO** – Department of Fisheries and Oceans  
**DUC** – Ducks Unlimited Canada  
**EFP** – Environmental Farm Plan  
**FNR** – First Nations Reserve  
**FRWIP** – Farm and Ranch Water Infrastructure Program  
**FSP** – Farm Stewardship Program  
**GSLWAB** – Good Spirit Lake Watershed Association Board  
**GSLPP** – Good Spirit Lake Provincial Park  
**GIS** – Geographic Information System (computer mapping)  
**GF1** – Growing Forward 1  
**GF2** – Growing Forward 2  
**ILO** – Intensive Livestock Operation  
**IACC** – Institutional Adaptation to Climate Change  
**LID** – Low Impact Development  
**LIRA** – Land and Infrastructure Resiliency Assessment  
**LQWS** – Lower Qu'Appelle Watershed Stewards  
**LWBSF** – Lake Winnipeg Basin Stewardship Fund  
**MCDA** – Manitoba Conservation Districts Association  
**MOA** – Ministry of Agriculture  
**MOE** – Ministry of Environment  
**MOH** – Ministry of Highways

## **Acronym List**

**NRCAN** – Natural Resources Canada  
**NWCF** – National Wetland Conservation Fund  
**PCAB** – Provincial Council of Add Boards  
**PCAP** – Prairie Conservation Action Plan  
**PHJV** – Prairie Habitat Joint Venture  
**PFRA** – Prairie Farm Rehabilitation Administration  
**RM** – Rural Municipality  
**SARM** – Saskatchewan Association of Rural Municipalities  
**SAW** – Saskatchewan Association of Watersheds  
**SCDA** – Saskatchewan Conservation & Development Association  
**SES** – Saskatchewan Environmental Society  
**SRC** – Saskatchewan Research Council  
**SUMA** – Saskatchewan Association of Urban Municipalities  
**SWA** – Saskatchewan Watershed Authority  
**SWAT** – Soil and Water Assessment Tool  
**SWAUMP** – Source Water and Urban Municipal Projects Fund  
**SWF** – Saskatchewan Wildlife Federation  
**SWPP** – Source Water Protection Plan  
**WCWAB** – Wallace Creek Watershed Association Board  
**WSA** – Water Security Agency (Formerly SWA)  
**YCWAB** – Yorkton Creek Watershed Association Board  
**YWF** – Yorkton Wildlife Federation

**Aquifer** – A permeable body of rock capable of yielding usable quantities of groundwater to wells and springs.

**Watershed** – An elevated boundary contained by its drainage divide and subject to surface and subsurface drainage under gravity to the ocean and interior lakes.



## STATEMENT OF RESPONSIBILITY

The accompanying financial statements are the responsibility of the Board Members of the Assiniboine Watershed Stewardship Association Inc. and have been prepared in compliance with legislation, and in accordance with Canadian public sector accounting standards including the 4200 series.

In carrying out its responsibilities, the Board Members maintain appropriate systems of internal and administrative controls designed to provide reasonable assurance that transactions are executed in accordance with proper authorization, that assets are properly accounted for and safeguarded, and that financial information produced is relevant and reliable.

The Board Members of the organization met the external auditors to review the financial statements and discuss any significant financial reporting or internal control matters prior to their approval of the financial statements.

Sensus Partnership of Chartered Accountants, as the organization's appointed external auditors, have audited the financial statements. The Auditors' Report is addressed to the Board Members and appears on the following page. Their opinion is based upon an examination conducted in accordance with Canadian generally accepted auditing standards, performing such tests and other procedures as they consider necessary to obtain reasonable assurance that the financial statements are free of material misstatement and present fairly the financial position and results of the organization in accordance with Canadian public sector accounting standards including the 4200 series.



---

Board Member

## INDEPENDENT AUDITORS' REPORT



### TO THE BOARD MEMBERS:

Assiniboine Watershed Stewardship Association Inc.  
Yorkton, Saskatchewan

#### Report on the Financial Statements

We have audited the accompanying financial statements of Assiniboine Watershed Stewardship Association Inc., which are comprised of the statement of financial position as at October 31, 2014 and October 31, 2013 and the statement of operations, change in net assets, and cash flows for the years then ended, and a summary of significant accounting policies and other explanatory information.

#### Management's Responsibility for the Financial Statements

Management is responsible for the preparation and fair presentation of these financial statements in accordance with Canadian public sector accounting standards including the 4200 series, and for such internal control as management determines is necessary to enable the preparation of financial statements that are free from material misstatement, whether due to fraud or error.

#### Auditors' Responsibility

Our responsibility is to express an opinion on these financial statements based on our audit. We conducted our audit in accordance with Canadian generally accepted auditing standards. Those standards require that we comply with ethical requirements and plan and perform the audit to obtain reasonable assurance about whether the financial statements are free from material misstatement.

An audit involves performing procedures to obtain audit evidence about the amounts and disclosures in the financial statements. The procedures selected depend on the auditors' judgment, including the assessment of the risks of material misstatement of the financial statements, whether due to fraud or error. In making those risk assessments, the auditor considers internal control relevant to the entity's preparation and fair presentation of the financial statements in order to design audit procedures that are appropriate in the circumstances, but not for the purpose of expressing an opinion on the effectiveness of the entity's internal control. An audit also includes evaluating the appropriateness of accounting policies used and the reasonableness of accounting estimates made by management, as well as evaluating the overall presentation of the financial statements.

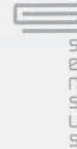
We believe that the audit evidence we have obtained is sufficient and appropriate to provide a basis for our audit opinion.

#### Opinion

In our opinion, the financial statements present fairly, in all material respects, the financial position of Assiniboine Watershed Stewardship Association Inc. as at October 31, 2014 and October 31, 2013, and the results of its operations and its cash flows for the years then ended in accordance with Canadian public sector accounting standards including the 4200 series.

Yorkton, Saskatchewan  
February 16, 2015

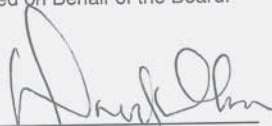
**PARTNERSHIP OF  
CHARTERED ACCOUNTANTS**



**ASSINIBOINE WATERSHED STEWARDSHIP ASSOCIATION INC.**  
**STATEMENT OF FINANCIAL POSITION**  
As at October 31, 2014

	2014	2013
<b>ASSETS</b>		
<b>CURRENT</b>		
Cash	\$ 222,172	\$ 133,466
Accounts receivable (Note 3)	52,467	37,042
Prepaid expenses	<u>758</u>	<u>733</u>
	275,397	171,241
<b>SECURITY DEPOSIT</b>	1,230	1,230
<b>CAPITAL ASSETS</b> (Notes 2 and 4)	<u>11,634</u>	<u>16,611</u>
	<u>\$ 288,261</u>	<u>\$ 189,082</u>
<b>LIABILITIES</b>		
<b>CURRENT</b>		
Accounts payable (Note 5)	\$ 98,180	\$ 17,891
Deferred contributions (Notes 2 and 6)	<u>116,070</u>	<u>79,986</u>
	<u>214,250</u>	<u>97,877</u>
<b>NET ASSETS</b>		
<b>UNRESTRICTED NET ASSETS</b> (Note 10)	58,967	71,580
<b>INVESTED IN CAPITAL ASSETS</b> (Note 10)	11,634	16,611
<b>INTERNALLY RESTRICTED FOR SWAUMP PROJECTS</b> (Note 10)	3,000	3,000
<b>INTERNALLY RESTRICTED FOR TREE PLANTING EQUIPMENT</b> (Note 10)	<u>410</u>	<u>14</u>
	<u>74,011</u>	<u>91,205</u>
	<u>\$ 288,261</u>	<u>\$ 189,082</u>

Approved on Behalf of the Board:

  
Board Member





**ASSINIBOINE WATERSHED STEWARDSHIP ASSOCIATION INC.**  
**STATEMENT OF OPERATIONS**  
For the year ended October 31, 2014

	2014	2013
<b>REVENUE</b>		
Environment Canada	\$ 208,487	\$ 78,084
Water Security Agency (formerly Saskatchewan Watershed Authority)	137,996	152,830
Ministry of Agriculture	67,100	72,091
Membership fees	50,045	32,030
Ducks Unlimited Canada	36,573	34,790
Saskatchewan Wildlife Federation	4,780	18,426
Saskatchewan Association of Watersheds		5,768
Other	2,137	1,550
Interest	731	666
Good Spirit Lake Watershed Association Board		11,035
Canon		5,000
	<u>507,849</u>	<u>412,270</u>
<b>OPERATING EXPENSES</b>		
Administration	1,366	903
Advertising	11,744	6,171
Amortization	4,977	3,898
Board of Directors travel and meals	9,032	11,336
Courses and seminars	4,550	1,803
Equipment and furniture	471	1,686
Insurance	461	462
Interest and bank charges	192	191
Meals and entertainment	3,273	2,429
Memberships and licenses	3,372	3,210
Office, printing and postage	6,665	11,618
Professional fees	5,888	10,176
Projects	226,045	118,474
Rent	17,570	17,370
Salaries and benefits	208,932	202,002
Telephone	4,708	4,777
Travel	15,797	12,190
	<u>525,043</u>	<u>408,696</u>
<b>(DEFICIENCY) EXCESS OF REVENUES OVER EXPENSES</b>	<u>\$ (17,194)</u>	<u>\$ 3,574</u>

**ASSINIBOINE WATERSHED STEWARDSHIP ASSOCIATION INC.**

**STATEMENT OF CHANGES IN NET ASSETS**

For the year ended October 31, 2014

	Unrestricted Net Assets	Invested in Capital Assets	Internally Restricted for SWAUMP Projects	Internally Restricted for Tree Planting Equipment	2014 Total	2013 Total
<b>BEGINNING OF YEAR</b>	71,580	16,611	3,000	14	91,205	87,631
Excess (deficiency) of revenue over expenses	<u>(12,613)</u>	<u>(4,977)</u>		<u>396</u>	<u>(17,194)</u>	<u>3,574</u>
<b>END OF YEAR</b>	<u>\$ 58,967</u>	<u>\$ 11,634</u>	<u>\$ 3,000</u>	<u>\$ 410</u>	<u>\$ 74,011</u>	<u>\$ 91,205</u>





**ASSINIBOINE WATERSHED STEWARDSHIP ASSOCIATION INC.**  
**STATEMENT OF CASH FLOWS**  
For the year ended October 31, 2014

	2014	2013
<b>CASH FLOWS FROM OPERATING ACTIVITIES</b>		
Excess of revenues over expenses	\$ (17,194)	\$ 3,574
Adjustments for amortization	4,977	3,898
Changes in non-cash working capital (Note 7)	<u>100,923</u>	<u>20,474</u>
	<u>88,706</u>	<u>27,946</u>
<b>CASH FLOWS FROM INVESTING ACTIVITIES</b>		
Purchase of capital assets	<u>                    </u>	<u>(17,286)</u>
<b>CHANGE IN CASH</b>	88,706	10,660
<b>CASH, BEGINNING OF YEAR</b>	<u>133,466</u>	<u>122,806</u>
<b>CASH, END OF YEAR</b>	<u>\$ 222,172</u>	<u>\$ 133,466</u>



**ASSINIBOINE WATERSHED STEWARDSHIP ASSOCIATION INC.**  
**NOTES TO FINANCIAL STATEMENTS**  
 For the year ended October 31, 2014

---

**1. DESCRIPTION OF ORGANIZATION**

Assiniboine Watershed Stewardship Association Inc. (the organization) was incorporated on January 23, 2007 under the Non-Profit Corporations Act, and therefore is exempt from tax under the Income Tax Act. The organization works to protect and enhance source water in the Assiniboine River Watershed as guided by the Assiniboine River Watershed Water Protection Plan and the Yorkton Area Aquifers Source Water Protection Plan.

**2. SUMMARY OF SIGNIFICANT ACCOUNTING POLICIES**

These financial statements have been prepared in accordance with public sector accounting standards including the 4200 series and include the following accounting policies.

**Revenue recognition**

The organization follows the deferral method of accounting for contributions. Restricted contributions are recognized as revenue in which the related expenses are incurred. Unrestricted contributions are recognized as revenue when received or receivable if the amount to be received can be reasonably estimated and collection is reasonably assured.

**Capital assets**

The organization records capital asset additions or disposals at cost. Amortization is calculated on a straight line basis at rates intended to amortize the cost of the assets over their estimated useful lives. The amortization rate for the asset categories are as follows:

Furniture, fixtures and equipment	12.5%
Computer equipment	25%
Computer software	25%
Signage	25%

**Allocation of expenses**

The organization undertakes a number of projects in any given year which are funded through specific grants and programs. Expenses are allocated to those projects as disclosed on the Statement of Project Fund Operations on the following basis:

- Occupancy costs (rent expenses) are allocated to the extent approved under specific funding agreements;
- General expenses, including meals and travel costs, as well as project specific expenditures, are allocated to the specific projects for which they have been incurred;
- Wages are allocated based on time spent on each project on an hourly wage equivalent. Wages are only allocated to the extent that project revenues have been received to offset the related wages. Any employee time spent on projects for which funding has been exhausted by non-wage related expenses is expensed in the general fund.

**Deferred contributions**

Deferred contributions are the portion of fees received prior to year end which relates to programs and services to be delivered after year end.

**ASSINIBOINE WATERSHED STEWARDSHIP ASSOCIATION INC.**  
**NOTES TO FINANCIAL STATEMENTS**  
For the year ended October 31, 2014



**2. SUMMARY OF SIGNIFICANT ACCOUNTING POLICIES (continued)**

**Use of estimates**

The preparation of financial statements in accordance with Canadian generally accepted accounting principles requires management to make estimates and assumptions that affect the reported amount of assets and liabilities and disclosure of contingent assets and liabilities at the date of the financial statements and the reported amount of revenues and expenses during the reporting period. These estimates are reviewed periodically, and, as adjustments become necessary, they are reported in earnings in the period in which they become known.

**Risk management policies and hedging activities**

Consistent with other small entities, management's risk management policies are typically performed as a part of the overall management of the entity's operations. Management is aware of risks related to these objectives through direct personal involvement with employees and outside parties. Management's close involvement in operations identifies risks and variations from expectations leading to changes in risk management activities and requirements and actions. Management has not entered into hedging transactions to manage risk. As a part of the overall management of the entity's operations management considers avoidance of undue concentration of risk, and may require collateral to mitigate credit risk.

**Financial instruments**

All significant financial assets, financial liabilities, and equity instruments of the organization are either recognized or disclosed in the financial statements together with other information relevant for making a reasonable assessment of future cash flows and interest rate, currency, or credit risk.

**Measurement of financial instruments**

The entity measures its financial assets and financial liabilities at fair value, adjusted by, in the case of a financial instrument that will not be measured subsequently at fair value, the amount of transaction costs directly attributable to the instrument. The organization subsequently measures all its financial assets and financial liabilities at amortized cost, except for investments in equity instruments that are quoted in an active market, which are measured at fair value. Changes in fair value are recognized in the statements of operations in the period incurred. Financial instruments measured at amortized cost include cash, amounts receivable and fixed income investments. Financial liabilities measured at amortized cost include accounts payable and accrued liabilities.

**Impairment**

Financial assets measured at cost are tested for impairment when there are indicators of impairment. The amount of the write-down is recognized in income. The previously recognized impairment loss may be reversed to the extent of the improvement, directly or by adjusting the allowance account, provided it is not greater than the amount that would have been reported at the date of the reversal had the impairment not been recognized previously. The amount of the reversal is recognized in the excess of revenue over expenses.

**Transaction costs**

Transaction costs are recognized in the statements of operations in the period incurred, except for financial instruments that will be subsequently measured at amortized cost. Transaction costs associated with the acquisition and disposal of fixed income investments are capitalized and are included in the acquisition costs or reduce proceeds on disposal. Investment management fees associated with mutual funds are expensed as incurred.

**ASSINIBOINE WATERSHED STEWARDSHIP ASSOCIATION INC.**  
**NOTES TO FINANCIAL STATEMENTS**  
For the year ended October 31, 2014



**3. ACCOUNTS RECEIVABLE**

	2014	2013
GST	\$ 1,309	\$ 4,417
Trade	43,652	32,625
Grants	<u>7,506</u>	<u>          </u>
	<u>\$ 52,467</u>	<u>\$ 37,042</u>

**4. CAPITAL ASSETS**

	Balance, Beginning of year	Additions	Disposals	Balance, End of year
Furniture, fixtures and equipment	\$ 2,657			\$ 2,657
Computer equipment	4,464			4,464
Computer software	3,169			3,169
Signage	<u>17,286</u>	<u>          </u>	<u>          </u>	<u>17,286</u>
	<u>27,576</u>	<u>          </u>	<u>          </u>	<u>27,576</u>
<b>ACCUMULATED AMORTIZATION</b>				
Furniture, fixtures and equipment	1,495	332		1,827
Computer equipment	4,464			4,464
Computer software	2,845	323		3,168
Signage	<u>2,161</u>	<u>4,322</u>	<u>          </u>	<u>6,483</u>
	<u>10,965</u>	<u>4,977</u>	<u>          </u>	<u>15,942</u>
<b>NET BOOK VALUE</b>	<u>\$ 16,611</u>			<u>\$ 11,634</u>

**5. ACCOUNTS PAYABLE**

	2014	2013
Accrued wages	\$ 13,480	\$ 11,221
Trade	81,400	3,370
Accrued audit fee	<u>3,300</u>	<u>3,300</u>
	<u>\$ 98,180</u>	<u>\$ 17,891</u>



**ASSINIBOINE WATERSHED STEWARDSHIP ASSOCIATION INC.**  
**NOTES TO FINANCIAL STATEMENTS**  
For the year ended October 31, 2014



**6. DEFERRED CONTRIBUTIONS**

Deferred contributions is comprised of the following items:

	2014	2013
Environment Canada Project: Lake Winnipeg Basin Stewardship Fund - Wetland Restoration	\$ 32,769	\$ 55,729
Saskatchewan Ministry of Agriculture projects: Agri-Environmental Group Planning	13,291	10,767
Wallace Creek Watershed	7,842	500
Saskatchewan Wildlife Federation Project: SWF Water Projects		4,780
Water Security Agency Project: Forage Conversion		7,210
Ducks Unlimited Canada projects: Logan Green Signage		1,000
DUC Signage	1,859	
DUC Wetland Project	25,247	
Environment Canada Project: Good Spirit Lake Shoreline Revitalization	<u>35,062</u>	<u>          </u>
	<u>\$ 116,070</u>	<u>\$ 79,986</u>

**7. CHANGES IN NON-CASH WORKING CAPITAL**

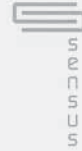
Change in cash from changes in:

	2014	2013
Accounts receivable	\$ (15,425)	\$ (31,620)
Accounts payable	80,288	12,833
Deferred contributions	36,085	39,238
Prepaid expense	<u>(25)</u>	<u>23</u>
	<u>\$ 100,923</u>	<u>\$ 20,474</u>

**ASSINIBOINE WATERSHED STEWARDSHIP ASSOCIATION INC.**  
**NOTES TO FINANCIAL STATEMENTS**  
For the year ended October 31, 2014

---

---



**8. ECONOMIC DEPENDENCE**

In 2014 the organization received 29% (2013 - 40%) of its operating revenue from the Water Security Agency (formerly the Saskatchewan Watershed Authority), 40% (2013 - 24%) from Environment Canada and 13% (2013 - 16%) from the Ministry of Agriculture and is economically dependent on them.

**9. LEASE OBLIGATIONS**

The organization leases commercial space at \$1,470 per month. The current lease agreement expires February 7, 2015.

**10. RESTRICTIONS ON NET ASSETS**

The accounts of the organization are maintained in accordance with the principles of fund accounting. For financial reporting purposes, accounts with similar characteristics have been combined into the following major funds:

(i) General fund

The general fund reflects primary operations of the organization including revenues received for operations and administration.

(ii) Project fund

The project fund accounts for revenue and expenditures related to specific projects undertaken by the organization.

(iii) Source Water and Urban Municipal Project fund (SWAUMP)

The Source Water and Urban Municipal project fund reflects the dollar value of membership fees that have been approved by the board for use by municipalities to improve their water protection and the expenses reimbursed for these projects.

(iv) Tree Planting Equipment

The Tree Planting Equipment project fund reflects the dollar value of membership fees that have been approved by the board for use in purchasing and maintaining tree planting equipment to make available for use and the expenses reimbursed for these projects.

(v) Invested in capital assets

Invested in capital assets is a restricted fund that reflects the equity of the organization in capital assets. The capital fund includes revenues designated for the acquisition of capital assets. Expenses consist primarily of the amortization of capital assets.

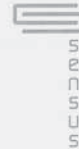
Of the net assets that are restricted for use, the board of directors has internally restricted net assets invested in capital assets of \$11,636 (2013 - \$16,611), internally restricted assets for SWAUMP projects of \$3,000 (2013 - \$3,000), and tree planting equipment of \$410 (2013 - \$14). These internally restricted amounts are not available for other purposes without approval of the board of directors.

**ASSINIBOINE WATERSHED STEWARDSHIP ASSOCIATION INC.**  
**SCHEDULE 1 - SCHEDULE OF CHANGES IN OTHER FUNDS**  
For the year ended October 31, 2014



	2014	2013
<b>REVENUE:</b>		
Water Security Agency	\$ 93,679	\$ 120,540
Membership fees	50,045	37,030
Other	1,509	550
Interest	731	666
Ducks Unlimited Canada		17,382
Ministry of Agriculture		9,309
Saskatchewan Wildlife Federation		450
	<u>145,964</u>	<u>185,927</u>
<b>OPERATING EXPENSES:</b>		
Administration	1,366	903
Advertising	4,616	826
Amortization	4,977	3,898
Board of Directors	9,032	11,336
Courses and seminars	2,378	1,803
Equipment and furniture	385	412
Insurance	461	462
Interest and bank charges	192	191
Meals and entertainment	2,039	1,226
Memberships and licenses	3,372	3,210
Office, printing and postage	4,982	5,567
Professional fees	5,888	10,111
Projects	2,893	13,897
Rent	10,270	8,120
Salaries and benefits	96,781	107,655
Telephone	4,182	4,597
Travel	9,344	8,139
	<u>163,158</u>	<u>182,353</u>
<b>(DEFICIENCY) EXCESS OF REVENUES OVER EXPENSES</b>	<b>\$ <u>(17,194)</u></b>	<b>\$ <u>3,574</u></b>





**ASSINIBOINE WATERSHED STEWARDSHIP ASSOCIATION INC.**  
**SCHEDULE 2 - SCHEDULE OF CHANGES IN PROJECT FUNDS**  
For the year ended October 31, 2014

	2014	2013
<b>REVENUE:</b>		
Environment Canada	\$ 208,487	\$ 78,084
Ministry of Agriculture	67,100	62,782
Water Security Agency	44,317	27,290
Ducks Unlimited Canada	36,573	17,408
Saskatchewan Wildlife Federation	4,780	17,976
Good Spirit Lake Watershed Association Board		11,035
Saskatchewan Association of Watersheds		5,768
Canon		5,000
Other	628	1,000
	<u>361,885</u>	<u>226,343</u>
<b>EXPENSES:</b>		
Advertising	7,127	5,345
Courses and seminars	2,172	
Equipment and furniture	86	1,274
Meals and entertainment	1,234	1,203
Office, printing and postage	1,684	6,116
Projects	223,152	104,577
Rent	7,300	9,250
Salaries and benefits	112,151	94,347
Telephone	526	180
Travel	6,453	4,051
	<u>361,885</u>	<u>226,343</u>
<b>EXCESS OF REVENUES OVER EXPENSES</b>	\$ <u>          </u>	\$ <u>          </u>

**ASSINIBOINE WATERSHED STEWARDSHIP ASSOCIATION INC.**  
**STATEMENT OF PROJECT FUND OPERATIONS BY PROJECT**  
For the year ended October 31, 2014

	Agri- Environmental Group Planning	Logan Green Signage	Lake Winnipeg Basin Stewardship Wetland Restoration	Forage Conversion - Water Security Agency	Good Spirit Lake Outlet	Emergency Flood Damage Reduction Program
<b>REVENUE</b>						
Environment Canada Ministry of Agriculture	67,100		193,403		3,812	
Water Security Agency				7,210		17,179
Ducks Unlimited Canada		1,000				
Saskatchewan Wildlife Federation						
Saskatchewan Association of Watersheds						
Good Spirit Lake Watershed Association						
Canon						
Other	<u>67,100</u>	<u>628</u>	<u>193,403</u>	<u>7,210</u>	<u>3,812</u>	<u>17,179</u>
		<u>1,628</u>				
<b>EXPENSES</b>						
Advertising	2,909		438			
Courses and seminars	2,172					
Equipment and furniture			69			
Meals and entertainment	567		165		20	174
Office, printing and postage	621					
Projects			169,800	7,175	3,210	249
Rent	5,250		500			
Salaries and benefits	51,704		21,000		582	15,921
Telephone	439					
Travel	3,438		1,431			835
	<u>67,100</u>	<u>1,628</u>	<u>193,403</u>	<u>7,210</u>	<u>3,812</u>	<u>17,179</u>
<b>Excess of Revenues over Expenses</b>	\$ <u>67,100</u>	\$ <u>1,628</u>	\$ <u>193,403</u>	\$ <u>7,210</u>	\$ <u>3,812</u>	\$ <u>17,179</u>



**ASSINIBOINE WATERSHED STEWARDSHIP ASSOCIATION INC.**  
**STATEMENT OF PROJECT FUND OPERATIONS BY PROJECT**  
 For the year ended October 31, 2014

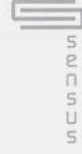
	SWF Water Projects	WSA/MOH Wetland Mitigation Project	DUC Wetland Restoration Project	Good Spirit Lake Shoreline Revitalization	Winter CWS WSA	DUC Signage
<b>REVENUE</b>						
Environment Canada Ministry of Agriculture		11,272				
Water Security Agency Ducks Unlimited Canada		7,358	34,232		2,287	1,341
Saskatchewan Wildlife Federation Saskatchewan Association of Watersheds Good Spirit Lake Watershed Association Canon Other	4,780					
	<u>4,780</u>	<u>7,358</u>	<u>34,232</u>	<u>11,272</u>	<u>2,287</u>	<u>1,341</u>
<b>EXPENSES</b>						
Advertising Courses and seminars Equipment and furniture Meals and entertainment Office, printing and postage Projects Rent Salaries and benefits Telephone Travel		1,811		17 28 6,320 4,500 50		341
	4,780	390	30,890		2,287	1,000
		5,157	3,000			
			286			
	<u>4,780</u>	<u>7,358</u>	<u>34,232</u>	<u>11,272</u>	<u>2,287</u>	<u>1,341</u>
<b>Excess of Revenues over Expenses</b>	\$	\$	\$	\$	\$	\$





**ASSINIBOINE WATERSHED STEWARDSHIP ASSOCIATION INC.**  
**STATEMENT OF PROJECT FUND OPERATIONS BY PROJECT**  
**For the year ended October 31, 2014**

	Wallace Creek Watershed	Total	Total
	2014	2014	2013
<b>REVENUE</b>			
Environment Canada		208,487	78,084
Ministry of Agriculture		67,100	62,782
Water Security Agency	10,283	44,317	27,290
Ducks Unlimited Canada		36,573	17,408
Saskatchewan Wildlife Federation		4,780	17,976
Saskatchewan Association of Watersheds			5,768
Good Spirit Lake Watershed Association			11,035
Canon		628	5,000
Other		361,885	226,343
	<u>10,283</u>	<u>361,885</u>	<u>226,343</u>
<b>EXPENSES</b>			
Advertising		7,127	5,345
Courses and seminars		2,172	
Equipment and furniture		86	1,274
Meals and entertainment	224	1,234	1,203
Office, printing and postage	1,063	1,684	6,116
Projects	338	223,152	104,577
Rent	1,550	7,300	9,250
Salaries and benefits	7,000	112,151	94,347
Telephone	37	526	180
Travel	71	6,453	4,051
	<u>10,283</u>	<u>361,885</u>	<u>226,343</u>
<b>Excess of Revenues over Expenses</b>	\$	\$	\$











**Assiniboine Watershed Stewardship Association  
29 Second Avenue North  
Yorkton, SK S3N 1G1  
(306) 783-1696**

**[www.assiniboinewatershed.com](http://www.assiniboinewatershed.com)**